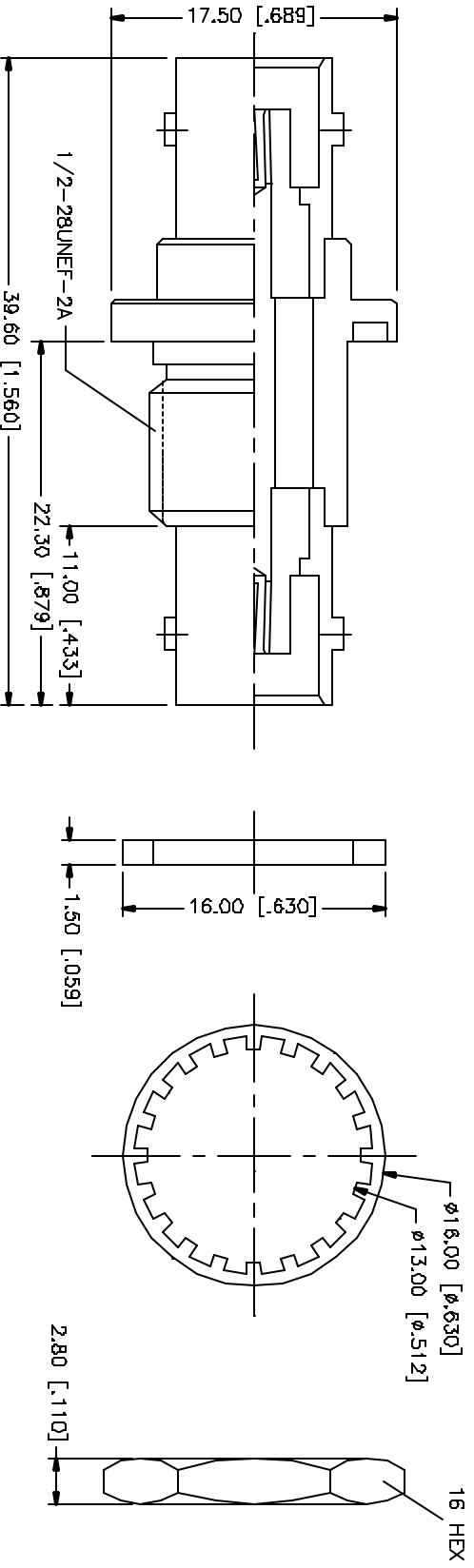
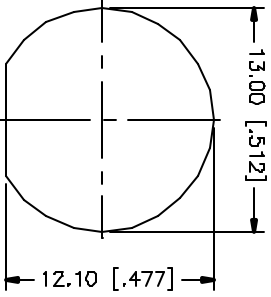


REV.	DATE	DESCRIPTION
NC	05/01/04	INITIAL RELEASE



RECOMMENDED MOUNTING HOLE



NOTE:  
 1. MAX. PANEL THICKNESS = 7mm

QTY	FINISH	MATERIAL	DESCRIPTION
1	NICKEL	BRASS	HOUSING/BODY
1	NATURAL	DELFIN	INSULATOR
1	COLD	PHOS. BRONZE	CONTACT PIN
1	RED	RUBBER	GASKET
1	NICKEL	BRASS	LOCK WASHER
1	NICKEL	BRASS	HEX NUT

APPROVALS	DATE
DRWN G.R.S.	05/01/04
CHECKED	
ISSUED	
SHEET 1 OF 1	

PART NO.	DWG. NO.	REV.	SIZE	SCALE
112434	112434.DWG	NC	A	NA

**Amphenol Connex**

**BNC FEMALE TO FEMALE BULKHEAD ADAPTER**

UNLESS OTHERWISE SPECIFIED DIMENSIONS ARE IN MILLIMETERS AND DECIMALS THEREOF. DIMENSIONS FOR MILLIMETERS ARE: 0.5 - 30mm ± 0.20mm, 30 - 120mm ± 0.40mm, 120 - 150mm ± 0.50mm. UNLESS OTHERWISE SPECIFIED DIMENSIONS FOR INCHES ARE: .020 - .315 = ± 0.007", .315 - 1.180 = ± 0.015", 1.180 - 4.724 = ± 0.020". DO NOT SCALE DRAWINGS.

# Mouser Electronics

Authorized Distributor

Click to View Pricing, Inventory, Delivery & Lifecycle Information:

[Amphenol:](#)

[112434](#)