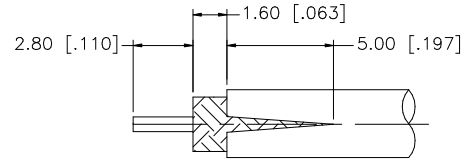
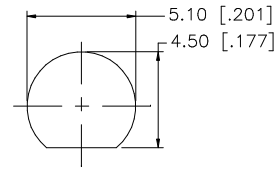


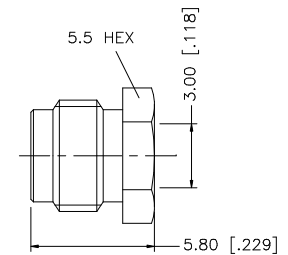
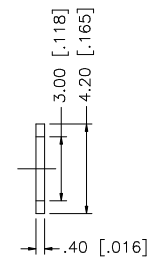
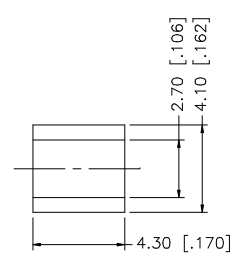
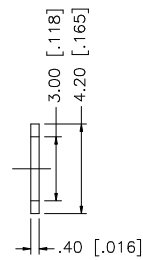
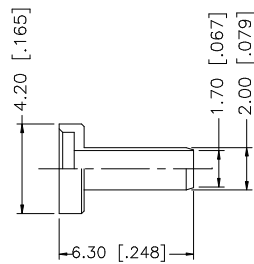
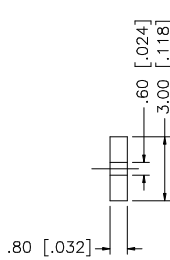
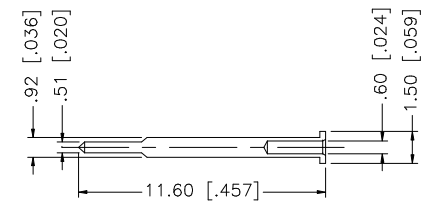
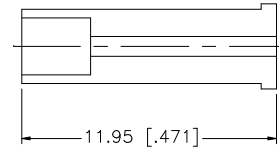
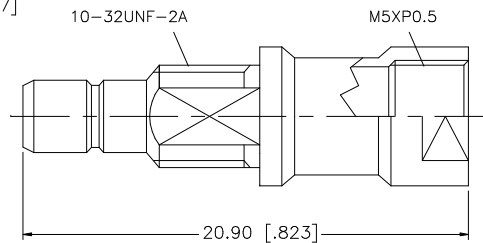
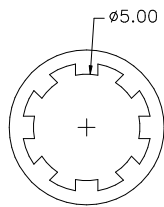
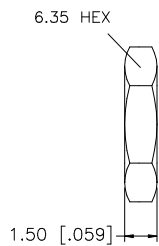
REV.	DATE	DESCRIPTION
NC	08/07/06	INITIAL RELEASE



RECOMMENDED
CABLE STRIPPING DIM'S



RECOMMENDED
MOUNTING HOLE



9	HEX NUT	BRASS	GOLD	1
8	LOCK WASHER	BRASS	GOLD	1
7	HEX NUT	BRASS	GOLD	1
6	GASKET	SILICONE	RED	1
5	WASHER	BRASS	GOLD	2
4	TOP HAT	COPPER	GOLD	1
3	CONTACT PIN	BRASS	GOLD	1
2	INSULATOR	TEFLON	NATURAL	2
1	BODY	BRASS	GOLD	1
	DESCRIPTION	MATERIAL	FINISH	QTY

UNLESS OTHERWISE SPECIFIED DIMENSIONS ARE IN MILLIMETERS. DIMENSIONS IN [] ARE IN INCHES AND FOR CUSTOMER REFERENCE ONLY.

UNLESS OTHERWISE SPECIFIED TOLERANCES FOR MILLIMETERS ARE:
0.5 - 8mm ± 0.20mm
8 - 30mm ± 0.40mm
30 - 120mm ± 0.50mm

UNLESS OTHERWISE SPECIFIED TOLERANCES FOR INCHES ARE:
.020 - .315 = ± 0.007"
.315 - 1.180 = ± 0.015"
1.180 - 4.724 = ± 0.020"

DO NOT SCALE DRAWING

APPROVALS	DATE
DRAWN G.R.S.	08/07/06
CHECKED	
ISSUED	
SHEET 1 OF 1	
CAD FILE	C:/142/142126.DWG

Amphenol Connex

PART DESCRIPTION

SMB BULKHEAD CLAMP JACK
(FOR RG-174/U, 316/U CABLE)

PART NO.

142126

DWG. NO.

142126.DWG

REV. NC

SIZE A

SCALE NA

Mouser Electronics

Authorized Distributor

Click to View Pricing, Inventory, Delivery & Lifecycle Information:

[Amphenol:](#)

[142126](#)