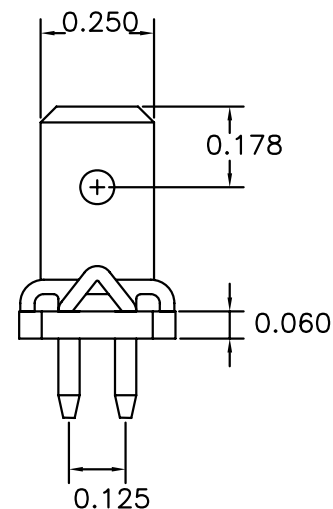
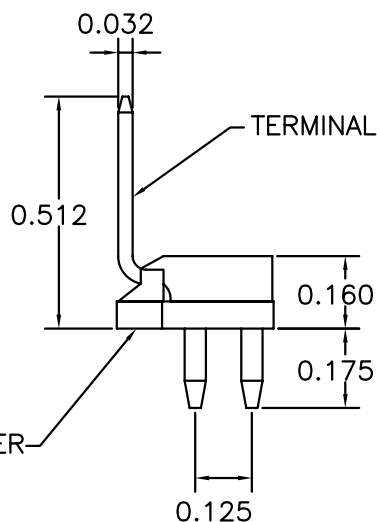
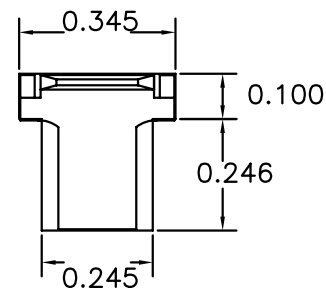


PRODUCT NUMBER NOTE 4	PLATING
221-E	OBSOLETE
221-ELF	150μ INCH MIN. 100% MATTE TIN

NOTES:

- SPACER MATERIAL: PPA 45% GLASS REINFORCED, COLOR: BLACK, FLAME RETARDANT PER UL 94V-0.
TERMINAL MATERIAL: C72500
- COMPLIANT PRESS-FIT PINS-FOUR
INSERTION FORCE: 90 lbs TYPICAL (240 MAX)
RETENTION FORCE: 35 lbs TYPICAL (10 lbs MIN) AT TAB
PLATED THROUGH HOLE SIZE: .039 - .044
(.0465 DRILL RECOMMENDED)
FOR USE WITH NEMA STANDARD 1/4" POWER RECEPTACLE
CURRENT RATING: 10 AMPS @10° C TEMPERATURE RISE.
- THE HOUSING WILL WITHSTAND EXPOSURE TO 255°C BOARD PEAK TEMPERATURE FOR 40 SECONDS IN A CONVECTION, INFRA-RED OR VAPOR PHASE OVEN.
- ADD AN "LF" SUFFIX TO PART NUMBER FOR PRODUCT THAT MEETS EUROPEAN UNION DIRECTIVES AND OTHER COUNTRY REGULATIONS AS DESCRIBED IN GS-22-008.



mat'l. code SEE NOTE 1				surface <input checked="" type="checkbox"/> tolerance		projection		product family FASTECH	
ltr	ecr no	dr	date	tolerances unless otherwise specified		INCH		title 221-E POWER TERMINAL	
A	V91019	LSS	1999-04-28	angles	linear	.xxx ±.003		scale 1:1	
B	V20114	CGD	2002-01-18					sheet 1 of 1 size	
C	V06-0365	HTB	2006-06-06					dwg no A88KC4039	
D	V06-1031	HTB	2006-10-23	dr	R. CONRAD	1999-04-28	FCI		A3
E	V06-1196	HTB	2007-01-19	engr	R. CONRAD	1999-04-22	type Product Customer Drawing		
				chr	R. CONRAD	1999-04-22			
				appd	R. CONRAD	1999-04-22			
sheet	revision	E							
index	sheet	1							