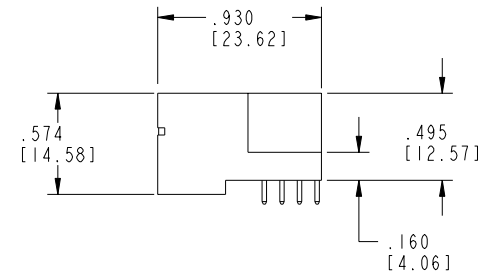
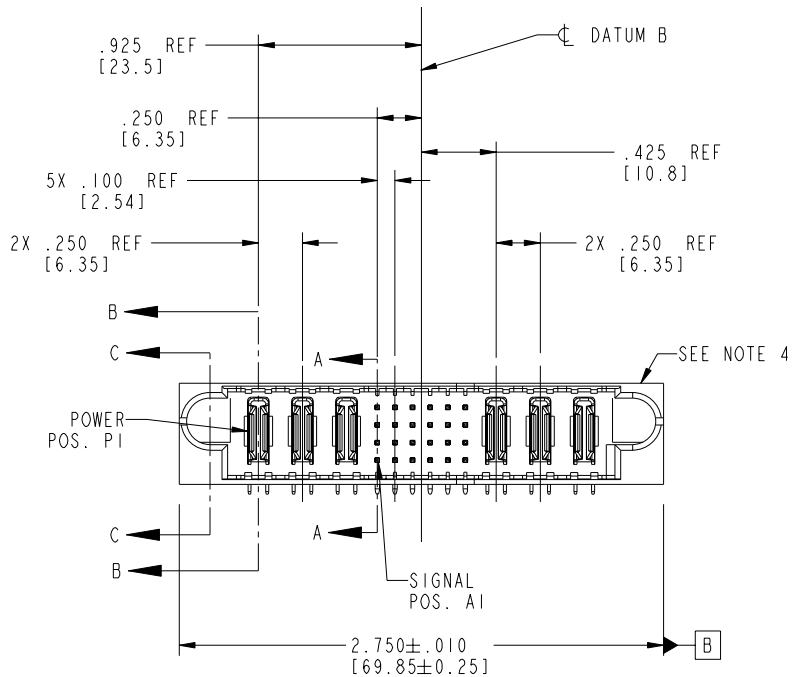


Tous droits strictement réservés. Reproduction ou communication a des tiers interdite sous quelque forme que ce soit sans autorisation écrite du propriétaire. Propriété de c FCI. Droits de reproduction FCI.

All rights strictly reserved. Reproduction or issue to third parties in any form whatever is not permitted without written authority from the proprietor. Property of FCI. Copyright FCI.

PRODUCT NO.	ROWS	POWER			SIGNAL						POWER			E2	
		E1	P1	P2	P3	1	2	3	4	5	6	P4	P5		P6
51730-072-- NOTE:3	D C B A		PA	PA	PA	UUUUUU	UUUUUU	UUUUUU	UUUUUU	UUUUUU	UUUUUU	PA	PA	PA	



CODE	DIM "M"	MATING LENGTH	CONTACT TYPE
F	.220	[5.59]	SIGNAL
R	.270	[6.86]	SIGNAL
S	.270	[6.86]	SIGNAL
T	.270	[6.86]	SIGNAL
U	.270	[6.86]	SIGNAL
PA	N/A	[N/A]	POWER

mat'l code				SEE NOTE 2		tolerances unless otherwise specified		CUSTOMER		 www.fciconnect.com	
ltr	ecn no.	dr	date	linear	.XX±.01/0.X±0.3	projection	1:1	COPY		title	
A	V03-0171	MEM	2/7/03	linear	.XXX±.005/0.XX±0.13	INCH/MM	1:1	3P + 24S + 3P		RIGHT ANGLE SOLDER HEADER	
B	DG05-0560	CS	12/20/05	angles	.XXX±.0020/0.XXX±0.051	scale	1:1	product family		PwrBlade	
				dr	M. MOSTOLLER 2/7/03			size		213	
				enr	M. MOSTOLLER 2/7/03			dwg no		51730-072	
				chr	H. BREWBAKER 2/7/03			sheet		1 of 4	
				appd	M. MOSTOLLER 2/7/03			sheet		1 of 4	
sheet index	revision	B	B	B	B			cage code		22526	
sheet	sheet	1	2	3	4					4	

Pro/E

PDM: Rev:B

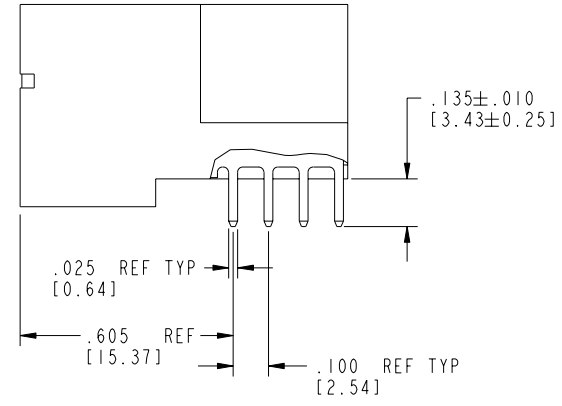
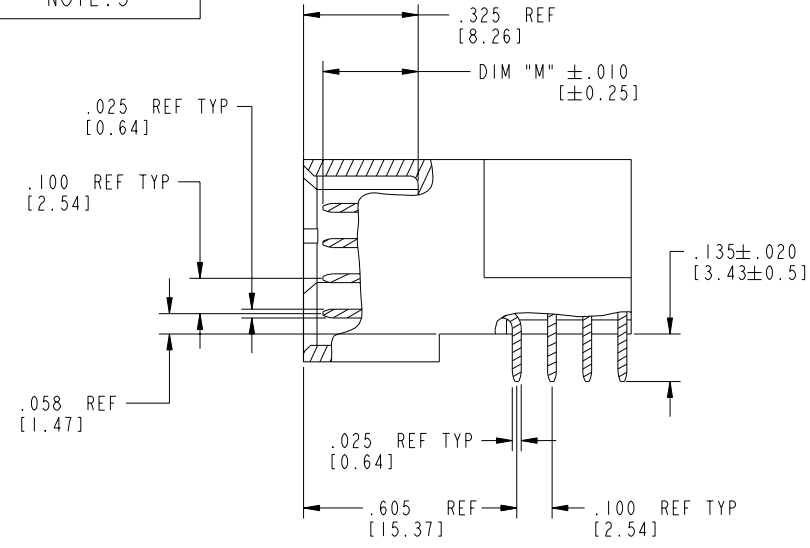
STATUS Released

Printed: Oct 08, 2006

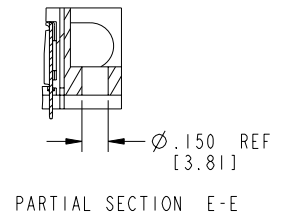
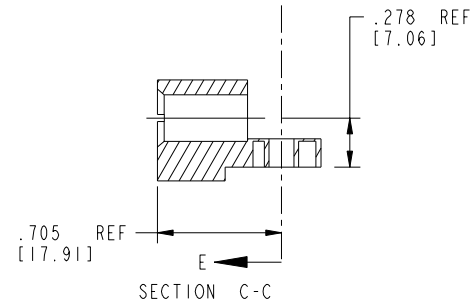
Tous droits strictement réservés. Reproduction ou communication a des tiers interdite sous quelque forme que ce soit sans autorisation écrite du propriétaire. Propriété de c FCI. Droits de reproduction FCI.

All rights strictly reserved. Reproduction or issue to third parties in any form whatever is not permitted without written authority from the proprietor. Property of FCI. Copyright FCI.

PRODUCT NUMBER  
51730-072--  
NOTE: 3



BROKEN-OUT SECTION A-A  
SCALE 2:1



PARTIAL SECTION E-E

mat'l code		SEE NOTE 2		tolerances unless otherwise specified		CUSTOMER		 www.fciconnect.com	
ltr	ecn no.	dr	date	linear	.XX±.01/0.X±0.3	COPY		projection	title
B					.XXX±.005/0.XX±0.13				3P + 24S + 3P
				angles	.XXX±.0020/0.XXX±0.051				RIGHT ANGLE SOLDER HEADER
					0°±2°				product family
				dr	M. MOSTOLLER 2/7/03	INCH/MM			PwrBlade
				enr	M. MOSTOLLER 2/7/03	scale		A	code
				chr	H. BREWBAKER 2/7/03	1:1		size	213
				appd	M. MOSTOLLER 2/7/03			dwg no	sheet
								51730-072	2 of 4
sheet index	revision sheet								

cage code 22526

Pro/E

PDM: Rev:B

STATUS Released

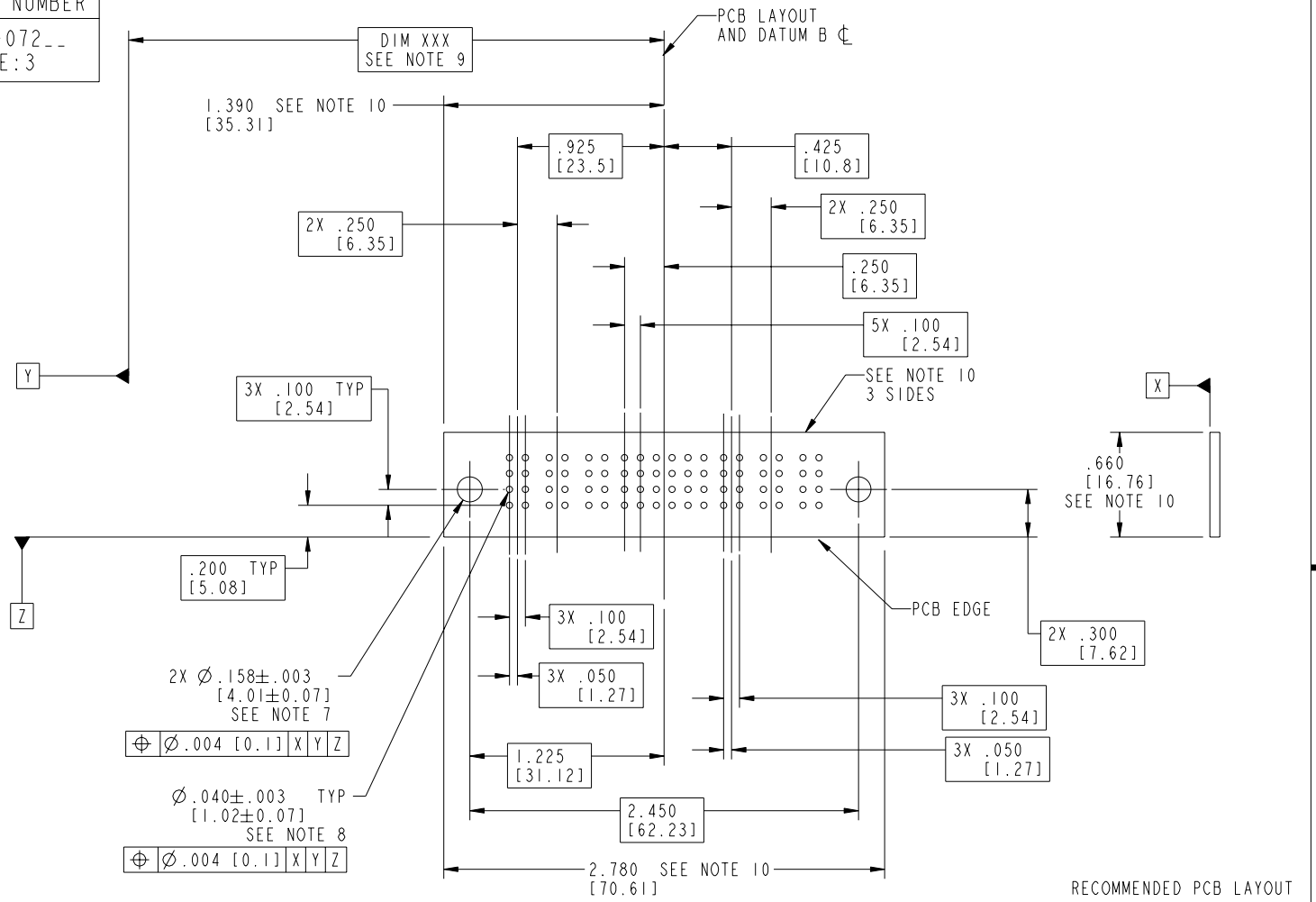
Printed: Oct 08, 2006

Tous droits strictement réservés. Reproduction ou communication a des tiers interdite sous quelque forme que ce soit sans autorisation écrite du propriétaire. Propriété de c FCI. Droits de reproduction FCI.

All rights strictly reserved. Reproduction or issue to third parties in any form whatever is not permitted without written authority from the proprietor. Property of FCI. Copyright FCI.

**FCI**

PRODUCT NUMBER  
51730-072--  
NOTE: 3



RECOMMENDED PCB LAYOUT

mat'l code		SEE NOTE 2		tolerances unless otherwise specified		CUSTOMER		<b>FCI</b>		www.fciconnect.com	
ltr	ecn no.	dr	date	linear	.XX±.01/0.XX±0.3	COPY		projection		title 3P + 24S + 3P	
B					.XXX±.005/0.XX±0.13			INCH/MM		RIGHT ANGLE SOLDER HEADER	
				angles	.XXXX±.0020/0.XXX±0.051			product family PwrBlade		code 213	
				dr	0°±2°	M. MOSTOLLER 2/7/03		size		sheet 3 of 4	
				enr		M. MOSTOLLER 2/7/03		scale		dwg no 51730-072	
				chr		H. BREWBAKER 2/7/03		A		3 of 4	
				appd		M. MOSTOLLER 2/7/03		1:1		sheet 3 of 4	
sheet index	revision sheet										

cage code 22526

Pro/E

PDM: Rev:B

STATUS Released

Printed: Oct 08, 2006

Tous droits strictement réservés. Reproduction ou communication à des tiers interdite sous quelque forme que ce soit sans autorisation écrite du propriétaire. Propriété de c FCI. Droits de reproduction FCI.

All rights strictly reserved. Reproduction or issue to third parties in any form whatever is not permitted without written authority from the proprietor. Property of FCI. Copyright FCI.

PRODUCT NUMBER  
51730-072\_\_  
NOTE: 3

NOTES:

1. DIMENSIONS AND TOLERANCES ARE IN ACCORDANCE WITH ASME Y14.5M, 1994 UNLESS OTHERWISE SPECIFIED.

CONNECTOR NOTES:

2. HOUSING MATERIAL: UL 94 V-0 GLASS FILLED  
HIGH-TEMP THERMOPLASTIC  
POWER CONTACT MATERIAL: COPPER ALLOY  
SIGNAL PIN MATERIAL: COPPER ALLOY

3. PLATING:

51730-072 Singal Pin: 30u"/0.76um Au OVER 50u"/1.27um Ni ON THE CONTACT AREA.  
AND 100u"/2.54um SnPb PLATING OVER 50u"/1.27um Ni ON THE TERMINATION SECTION.  
Power Pin: 30u"/0.76um Au OVER 50u"/1.27um Ni ON THE CONTACT AREA,  
AND 100u"/2.54um SnPb PLATING OVER 50u"/1.27um Ni ON THE TERMINATION SECTION.

51730-072LF Singal Pin: 30u"/0.76um Au OVER 50u"/1.27um Ni ON THE CONTACT AREA.  
AND 78u"/2.00um Sn PLATING OVER 50u"/1.27um Ni ON THE TERMINATION SECTION.  
Power Pin: 30u"/0.76um Au OVER 50u"/1.27um Ni ON THE CONTACT AREA,  
AND 78u"/2.00um Sn PLATING OVER 50u"/1.27um Ni ON THE TERMINATION SECTION.

PART NUMBER 51730-072LF MEETS EUROPEAN UNION DIRECTIVE AND OTHER COUNTRY REGULATIONS AS DESCRIBED IN GS-22-008.

THE HOUSING WILL WITHSTAND EXPOSURE TO 260° PEAK TEMPERATURE FOR 10 SECONDS IN A WAVE SOLDER APPLICATION WITH A CIRCUIT BOARD.

4. MANUFACTURER'S NAME, P/N, AND DATE CODE TO APPEAR ON THIS SURFACE.

5. PRODUCT SPECIFICATION GS-12-149.  
APPLICATION SPECIFICATION BUS-20-067.  
PACKAGED IN TRAYS.

PCB NOTES:


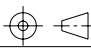

6. ALL HOLE DIAMETERS ARE FINISHED HOLE SIZE.

7. MOUNTING HOLES, WHERE APPLICABLE, ARE UNPLATED.

8.  $\varnothing .0453 \pm 0.0010$  [1.151 ± 0.025] DRILLED HOLES PLATED WITH  
0.0003 [0.008] MIN SnPb OVER .001 [0.03]  
TO .003 [0.08] Cu PLATING TO ACHIEVE  
 $\varnothing .040 \pm .003$  [1.02 ± .07] HOLE.

9. "DIM XXX" TO BE DETERMINED BY THE CUSTOMER.

10. CONNECTOR KEEP-OUT ZONE.

mat'l code				SEE NOTE 2		tolerances unless otherwise specified		CUSTOMER		 www.fciconnect.com	
ltr	ecn no.	dr	date	linear	.XX±.01/0.X±0.3		COPY		projection	title	
B					.XXX±.005/0.XX±0.13		INCH/MM			3P + 24S + 3P	
				angles	.XXXX±.0020/0.XXX±0.051				RIGHT ANGLE SOLDER HEADER		
				dr	0° ± 2°				product family		
				enr	M. MOSTOLLER	2/7/03	1:1		PwrBlade		
				chr	M. MOSTOLLER	2/7/03	A		code		
				appd	H. BREWBAKER	2/7/03	51730-072		213		
sheet index	revision sheet								sheet		
									4 of 4		

cage code 22526 4