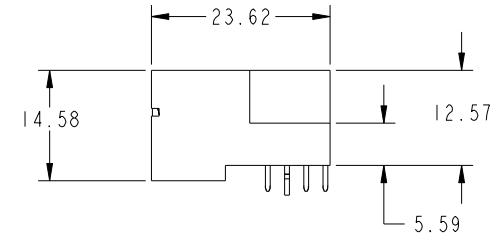
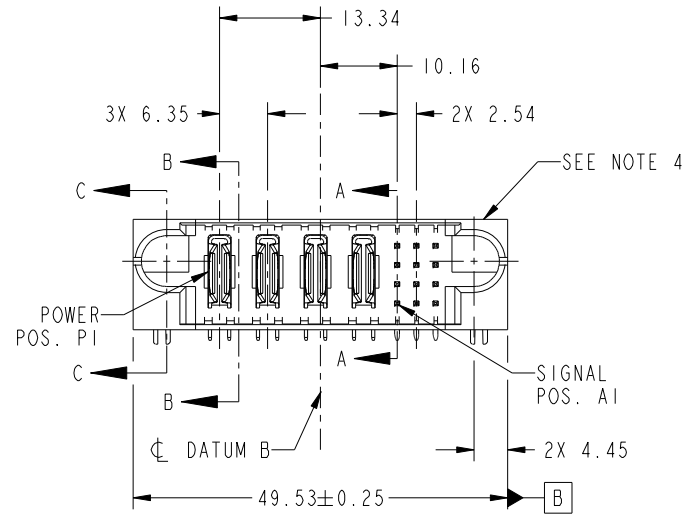


PRODUCT NO.	ROWS	POWER				SIGNAL				
		E1	P1	P2	P3	P4	1	2	3	E2
51732-074-- NOTE 3	DCBA									

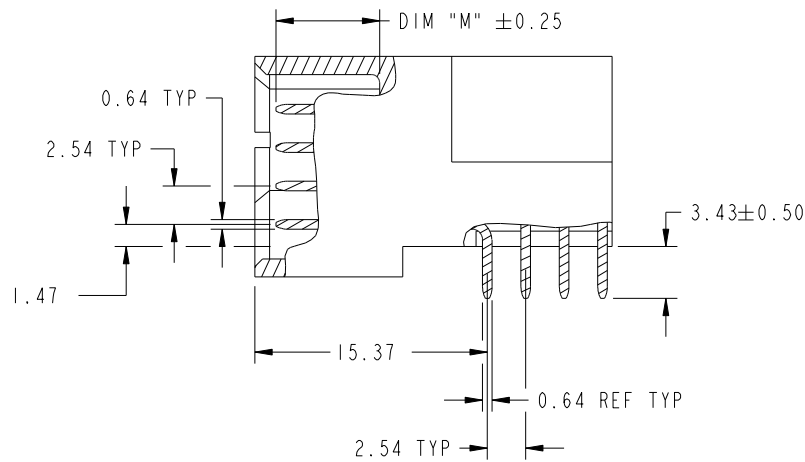


CODE	DIM "M" MATING LENGTH	CONTACT TYPE
U	[6.86]	SIGNAL
T	[6.86]	SIGNAL
S	[6.86]	SIGNAL
R	[6.86]	SIGNAL
PA	[N/A]	POWER
HA	[N/A]	HOLD-DOWN
H	[5.59]	SIGNAL
G	[5.59]	SIGNAL

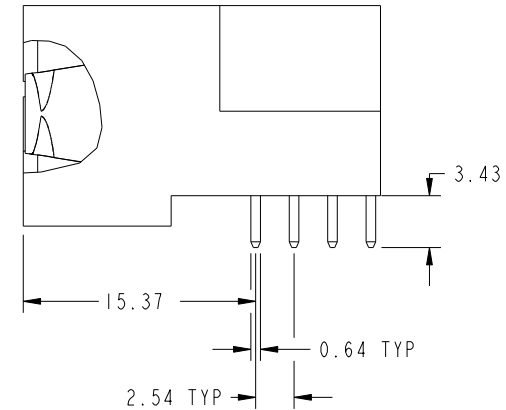
spec ref	*	dr	XQ Wang	2011-10-11	projection 	MM 	size	A4	scale	1:1		
tolerance std	TOLERANCES UNLESS OTHERWISE SPECIFIED	eng	XQ Wang	2011-10-11			product family	PwrBlade	ecn no	DG06-XXXX		
SEE NOTE		chr	PM ZHENG	2011-10-11				rel level	Released			
surface	linear	0.X	±0.5		title	4P + 12S	dwg no	51732-074	rev	A		
		0.XX	±0.25							cat. no.	-	Product - Customer Drw
	angular	0°	±2°							www.fci.com		

PRODUCT NUMBER

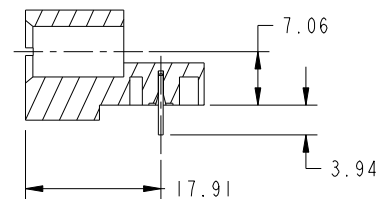
51732-074--
NOTE: 3



BROKEN-OUT SECTION A-A
SCALE 2:1



BROKEN-OUT SECTION B-B
SCALE 2:1

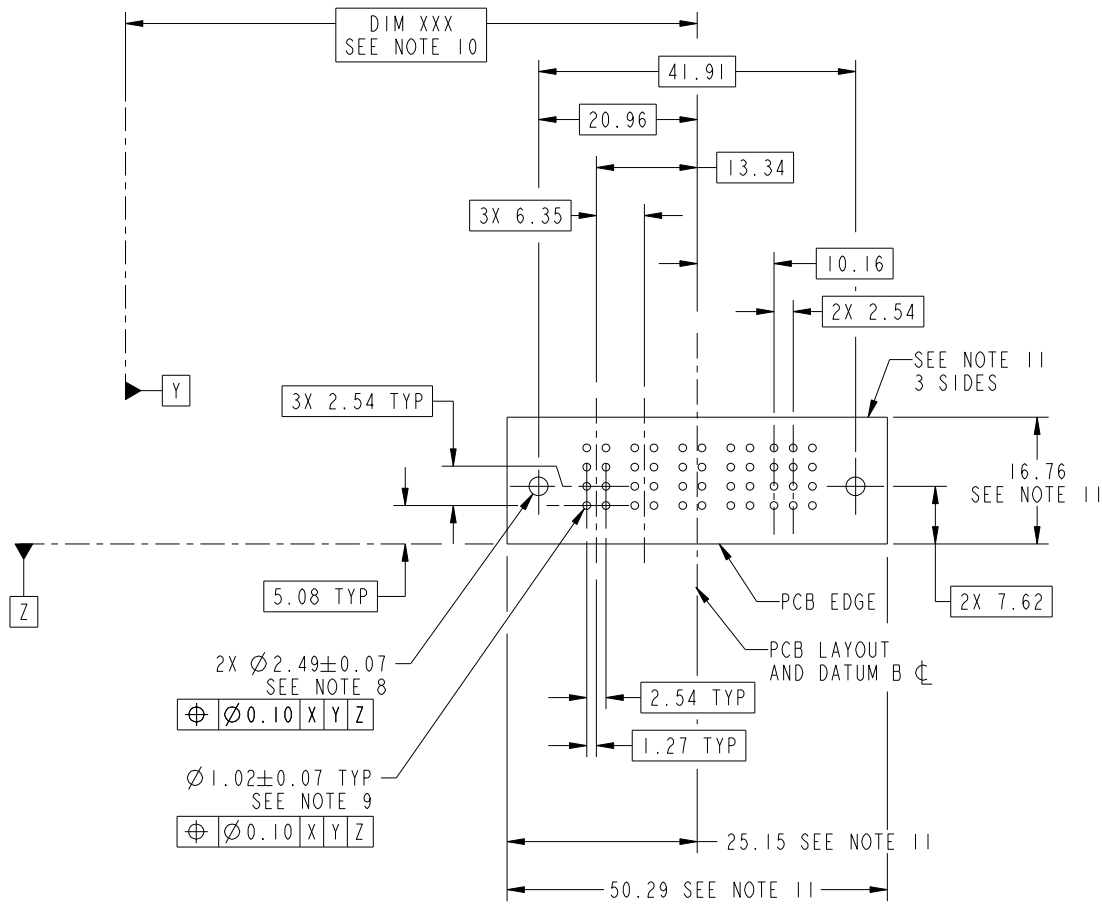


SECTION C-C

dr	XQ Wang	2011-10-11	projection 	MM 	size	A4	scale	1:1
eng	XQ Wang	2011-10-11			ecn no	DG06-XXXX		
chr	PM ZHENG	2011-10-11			rel level	Released		
appr	JOSEPH HSIA	2011-10-11	product family	PwrBlade		rev	A	
		title 4P + 12S RIGHT ANGLE SOLDER HEADER	dwg no 51732-074	www.fci.com		cat. no.	Product - Customer Drw	sheet 2 of 4

PRODUCT NUMBER

51732-074--
NOTE: 3



RECOMMENDED PCB LAYOUT

- 2X $\varnothing 2.49 \pm 0.07$
SEE NOTE 8
- $\varnothing 0.10$ X Y Z
- $\varnothing 1.02 \pm 0.07$ TYP
SEE NOTE 9
- $\varnothing 0.10$ X Y Z

dr	XQ Wang	2011-10-11	projection 	MM 	size	A4	scale	1:1			
eng	XQ Wang	2011-10-11			ecn no	DG06-XXXX					
chr	PM ZHENG	2011-10-11			rel level	Released					
appr	JOSEPH HSIA	2011-10-11	product family	PwrBlade							
		title			4P + 12S		dwg no		51732-074	rev	A
www.fci.com		cat. no.			-		Product - Customer Drw		sheet 3 of 4		



PRODUCT NUMBER
51732-074--
NOTE: 3

NOTES:

1. DIMENSIONS AND TOLERANCES ARE IN ACCORDANCE WITH ASME Y14.5M, 1994 UNLESS OTHERWISE SPECIFIED.

CONNECTOR NOTES:

- 2. HOUSING MATERIAL: UL 94 V-0 GLASS FILLED HIGH-TEMP THERMOPLASTIC
POWER CONTACT MATERIAL: COPPER ALLOY
SIGNAL PIN MATERIAL: COPPER ALLOY
- 3. SEE ITEM 1 & 2 IN PRINT 10064183 FOR PLATING SPEC OF 51732-074 AND 51732-074LF RESPECTIVELY.
- 4. MANUFACTURER'S NAME, DATE CODE AND OPTIONAL P/N TO APPEAR ON THIS SURFACE. THE P/N CAN BE OMITTED IF THERE IS NOT ENOUGH SPACE ON THIS SURFACE.
- 5. PRODUCT SPECIFICATION GS-12-149.
APPLICATION SPECIFICATION BUS-20-067.
- 6. PACKAGED IN TRAYS.

PCB NOTES:

- 7. ALL HOLE DIAMETERS ARE FINISHED HOLE SIZE.
- 8. MOUNTING HOLES, WHERE APPLICABLE, ARE UNPLATED.
- 9. $\varnothing 1.151 \pm 0.025$ DRILLED HOLES PLATED WITH
0.008 MIN SnPb OR Sn OVER 0.03
TO 0.08 Cu PLATING TO ACHIEVE
 $\varnothing 1.02 \pm 0.07$ HOLE.
- 10. "DIM XXX" TO BE DETERMINED BY THE CUSTOMER.
- 11. CONNECTOR KEEP-OUT ZONE.



Copyright FCI.

dr	XQ Wang	2011-10-11	projection 	MM 	size	A4	scale	1:1			
eng	XQ Wang	2011-10-11			ecn no	DG06-XXXX					
chr	PM ZHENG	2011-10-11			product family	PwrBlade	rel level	Released			
appr	JOSEPH HSIA	2011-10-11			title	4P + 12S RIGHT ANGLE SOLDER HEADER		dwg no	51732-074	rev	A
www.fci.com		cat. no.	-	Product - Customer Drw				sheet 4 of 4			