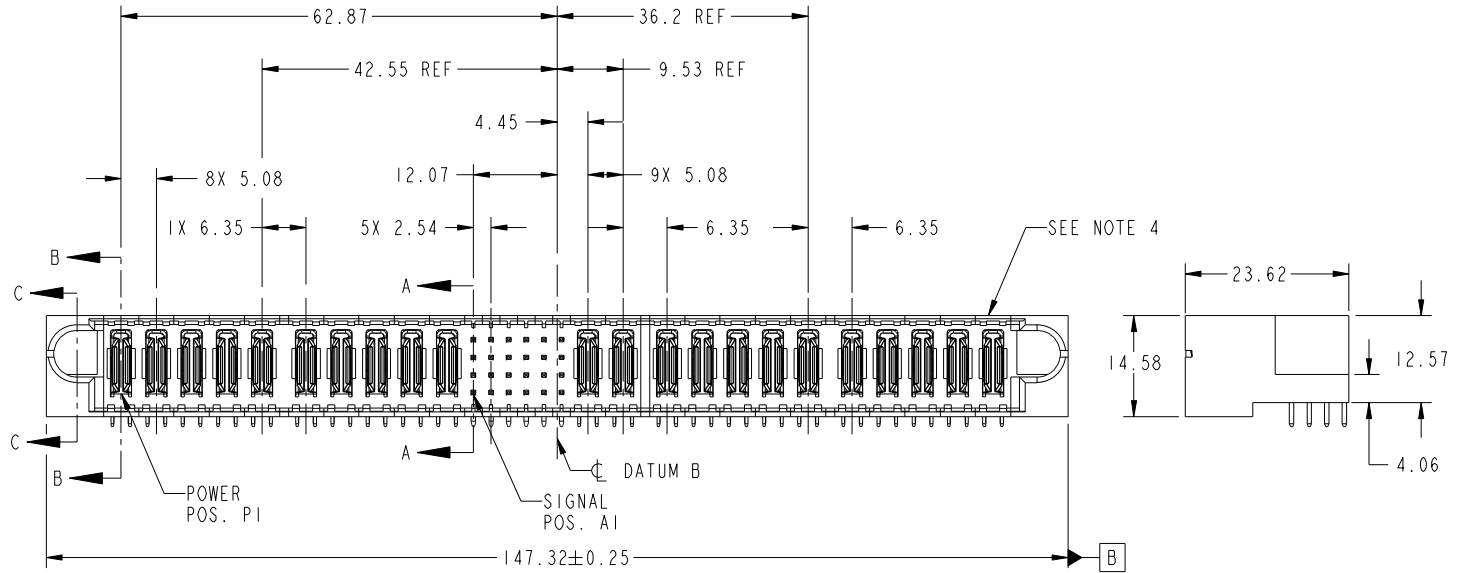


Tous droits strictement reserves. Reproduction ou communication a des tiers interdite sous quelque forme que ce soit sans autorisation écrite du propriétaire. Propriete de c FCI. Droits de reproduction FCI.



All rights strictly reserved. Reproduction or issue to third parties in any form whatever is not permitted without written authority from the proprietor. Property of FCI. Copyright FCI.

PRODUCT NO. 51939-329-- NOTE: 3	ROWS D C B A	POWER										SIGNAL						POWER						E2				
		E1	P1	P2	P3	P4	P5	P6	P7	P8	P9	P10	1	2	3	4	5	6	P11	P12	P13	P14	P15		P16	P17	P18	P19



CODE	DIM "M" MATING LENGTH	CONTACT TYPE
E	[5.59]	SIGNAL
R	[6.86]	SIGNAL
S	[6.86]	SIGNAL
T	[6.86]	SIGNAL
U	[6.86]	SIGNAL
PA	[N/A]	POWER

mat'l code				0		tolerances unless otherwise specified		CUSTOMER		FCI	
ltr	ecn no.	dr	date	linear	0.X ±0.5	projection	COPY		www.fciconnect.com		
A	DG07-0442	JC	11/08/07		0.XX ±0.25		title		10P + 24S + 12P		
B	DG07-0498	JW	09/09/0	angles	0.XXX ±0.10		RIGHT ANGLE SOLDER HEADER		product family PwrBlade code 213		
				dr	Jerome Chen	11/02/07	MIM		size	dwg no	sheet
				enr	Jerome Chen	11/08/07	← MIM →		A	51939-329	1 of 4
				chr	Gary Hsieh	11/08/07	scale		1:1		
				appd	Joseph Hsia	11/08/07					
sheet index	revision sheet	B 1	B 2	B 3	B 4						

sheet index		revision sheet		B 1		B 2		B 3		B 4		cage code		22526	
-------------	--	----------------	--	-----	--	-----	--	-----	--	-----	--	-----------	--	-------	--

Pro/E

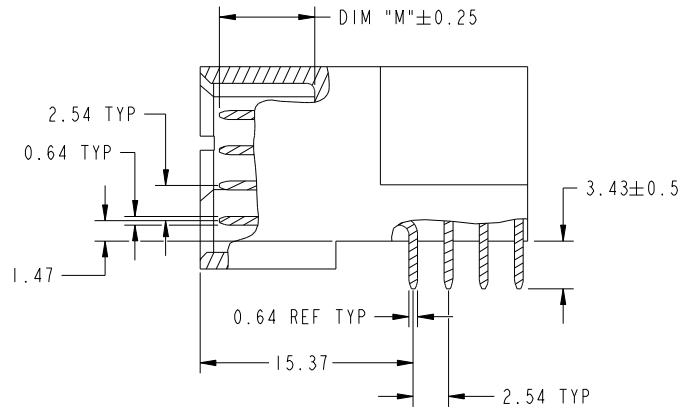
cage code 22526

Tous droits strictement reserves. Reproduction ou communication a des tiers interdite sous quelque forme que ce soit sans autorisation écrite du propriétaire. Propriete de c FCI. Droits de reproduction FCI.

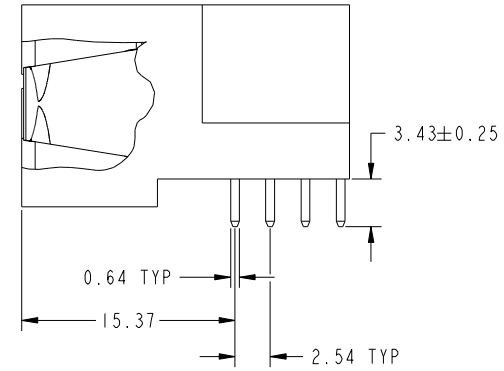
All rights strictly reserved. Reproduction or issue to third parties in any form whatever is not permitted without written authority from the proprietor. Property of FCI. Copyright FCI.



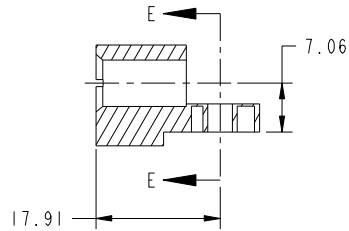
PRODUCT NUMBER
51939-329--
NOTE: 3



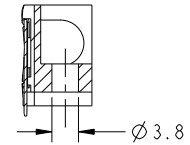
BROKEN-OUT SECTION A-A
SCALE 2:1



BROKEN-OUT SECTION B-B
SCALE 2:1



SECTION C-C



PARTIAL SECTION E-E

mat'l code				0	tolerances unless otherwise specified		CUSTOMER		FCI			
ltr	ecn no.	dr	date	linear	0.X ± 0.5	projection	COPY		www.fciconnect.com			
B					0.XX ± 0.25			title		10P + 24S + 12P RIGHT ANGLE SOLDER HEADER		
					0.XXX ± 0.10				product family		PwrBlade	code
					angles 0° ± 2°				scale	1:1	size	dwg no
				dr	Jerome Chen	11/02/07			sheet			
				enr	Jerome Chen	11/08/07			2 of 4			
				chr	Gary Hsieh	11/08/07						
				appd	Joseph Hsia	11/08/07						
sheet index		revision sheet										

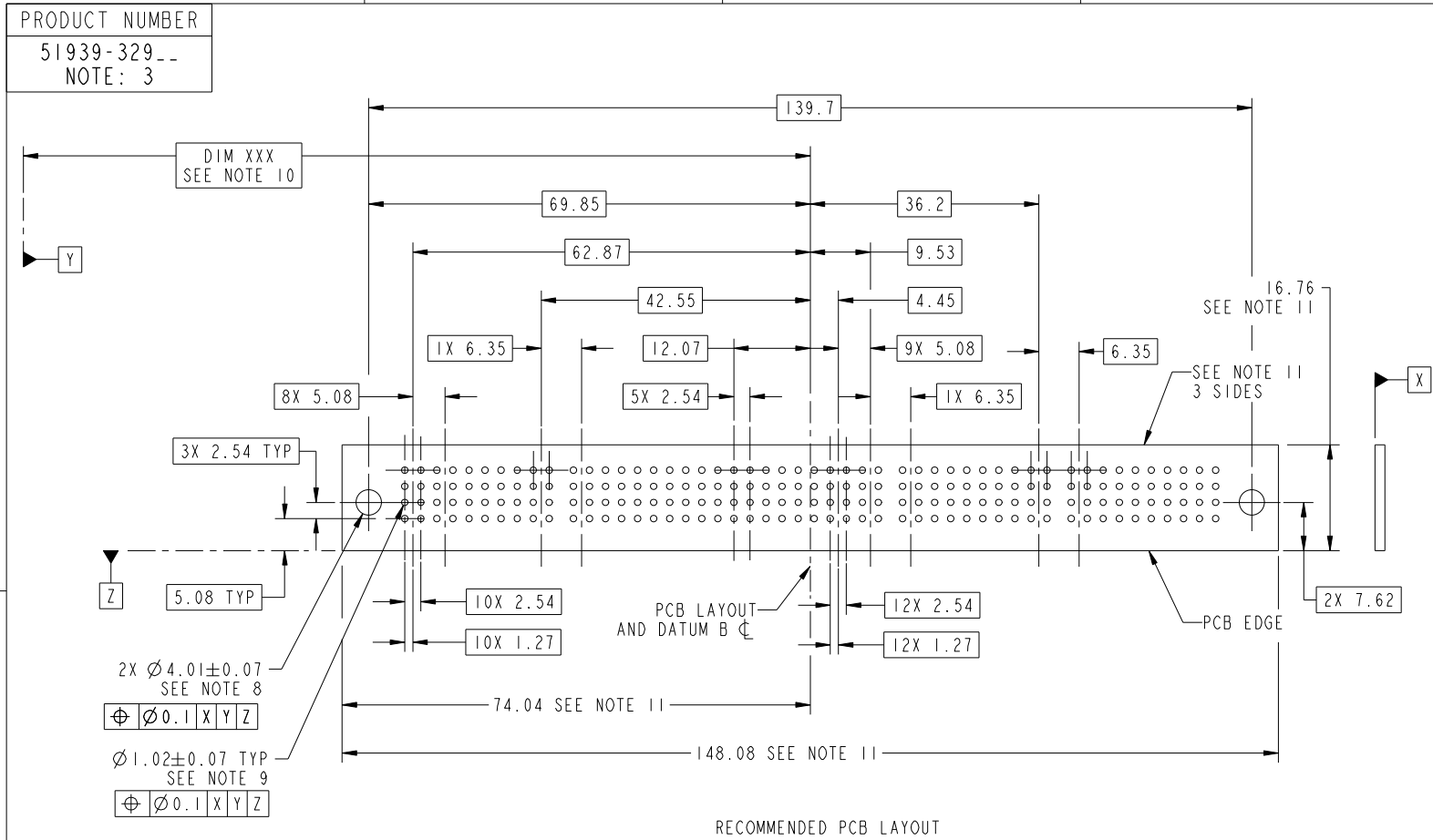
cage code 22526

Pro/E

Tous droits strictement reserves. Reproduction ou communication a des tiers interdite sous quelque forme que ce soit sans autorisation écrite du propriétaire. Propriete de c FCI. Droits de reproduction FCI.



All rights strictly reserved. Reproduction or issue to third parties in any form whatever is not permitted without written authority from the proprietor. Property of FCI. Copyright FCI.



RECOMMENDED PCB LAYOUT

mat'l code				0	tolerances unless otherwise specified		CUSTOMER		 www.fciconnect.com	
ltr	ecn no.	dr	date	linear	0.X ± 0.5		COPY		title	
B					0.XX ± 0.25		projection		10P + 24S + 12P RIGHT ANGLE SOLDER HEADER	
					0.XXX ± 0.10				product family	
				angles	0° ± 2°				PwrBlade	code
				dr	Jerome Chen	11/02/07	scale		size	213
				enr	Jerome Chen	11/08/07	1:1		dwg no	sheet
				chr	Gary Hsieh	11/08/07	A		51939-329	3 of 4
				appd	Joseph Hsia	11/08/07				
sheet index	revision sheet									

Pro/E

cage code 22526

Tous droits strictement reserves. Reproduction ou communication a des tiers interdite sous quelque forme que ce soit sans autorisation écrite du propriétaire. Propriete de c FCI. Droits de reproduction FCI.



All rights strictly reserved. Reproduction or issue to third parties in any form whatever is not permitted without written authority from the proprietor. Property of FCI. Copyright FCI.

PRODUCT NUMBER
51939-329--
NOTE: 3

NOTES:

1. DIMENSIONS AND TOLERANCES ARE IN ACCORDANCE WITH ASME Y14.5M, 1994 UNLESS OTHERWISE SPECIFIED.

CONNECTOR NOTES:

- 2. HOUSING MATERIAL: UL 94 V-0 GLASS FILLED HIGH-TEMP THERMOPLASTIC
POWER CONTACT MATERIAL: COPPER ALLOY
SIGNAL PIN MATERIAL: COPPER ALLOY
- 3. PLATING:
SEE ITEM 1 & 2 IN PRINT 10064183 FOR PLATING SPEC OF 51939-329; 51939-329LF PRESPECTIVELY.
- 4. MANUFACTURER'S NAME, P/N, AND DATE CODE TO APPEAR ON THIS SURFACE.
- 5. PRODUCT SPECIFICATION GS-12-149.
APPLICATION SPECIFICATION BUS-20-067.
- 6. PACKAGED IN TRAYS.

PCB NOTES:

- 7. ALL HOLE DIAMETERS ARE FINISHED HOLE SIZE.
- 8. MOUNTING HOLES, WHERE APPLICABLE, ARE UNPLATED.
- 9. $\varnothing 1.151 \pm 0.025$ DRILLED HOLES PLATED WITH 0.008 MIN SnPb OR Sn OVER 0.03 TO 0.08 Cu PLATING TO ACHIEVE $\varnothing 1.02 \pm .07$ HOLE.
- 10. "DIM XXX" TO BE DETERMINED BY THE CUSTOMER.
- 11. CONNECTOR KEEP-OUT ZONE.
- 12. A \triangle SYMBOL WILL BE NEXT TO ANY DIMENSION, VIEW, OR NOTE WHICH HAS BEEN MODIFIED WITH THE CURRENT DRAWING REVISION.

mat'l code				0	tolerances unless otherwise specified		CUSTOMER		FCI		www.fciconnect.com	
ltr	ecr no.	dr	date	linear	0.X ± 0.5		COPY		projection	title		
B					0.XX ± 0.25		MIM			10P + 24S + 12P RIGHT ANGLE SOLDER HEADER		
					0.XXX ± 0.10		1:1			product family PwrBlade code		
				angles	0° + 2°		scale		size			
				dr	Jerome Chen	11/02/07			dwg no		213	
				enr	Jerome Chen	11/08/07			sheet		4 of 4	
				chr	Gary Hsieh	11/08/07			51939-329			
				appd	Joseph Hsia	11/08/07			A			
sheet index	revision sheet											

cage code 22526

Pro/E