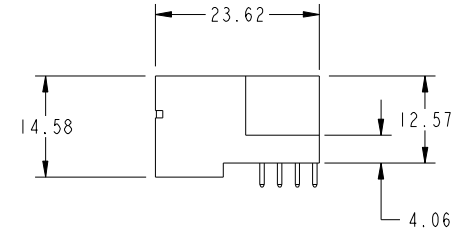
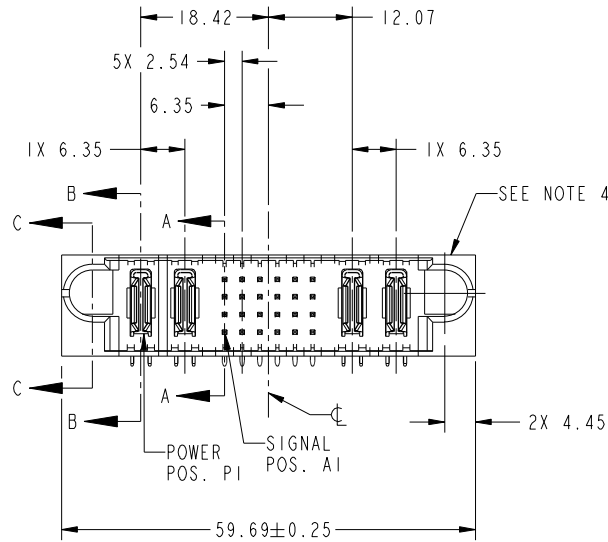


Tous droits strictement réservés. Reproduction ou communication a des tiers interdite sous quelque forme que ce soit sans autorisation écrite du propriétaire. Propriete de c FCI. Droits de reproduction FCI.



All rights strictly reserved. Reproduction or issue to third parties in any form whatever is not permitted without written authority from the proprietor. Property of FCI. Copyright FCI.

PRODUCT NO.	ROWS	POWER		SIGNAL						POWER		E2	
		E1	P1	P2	1	2	3	4	5	6	P3		P4
51939-330... NOTE 3	D C B A		PA	PA	UUUUUU	TTTTTT	SSSSSS	RRRRRR			PA	PA	



CODE	DIM "M" MATING LENGTH	CONTACT TYPE
PA	[N/A]	POWER
R	[6.86]	SIGNAL
S	[6.86]	SIGNAL
T	[6.86]	SIGNAL
U	[6.86]	SIGNAL
F	[5.59]	SIGNAL
H	[5.59]	SIGNAL

mat'l code				SEE NOTE 2		tolerances unless otherwise specified		CUSTOMER		FCI	
ltr	ecn no.	dr	date	linear	0.X ±0.3	projection		COPY		www.fciconnect.com	
A	DG07-0483	SH	12/03/07	angles	0.XX ±0.13			title		2P + 24S + 2P	
				dr	0.XXX ±0.051			product family		PwrBlade	code
				enr	0° ±2°	scale		size	dwg no	51939-330	213
				chr	Sincere He 11/12/07	1:1		sheet		1 of 4	
				appd	Sincere He 11/12/07			cage code		22526	
					Gary Hsieh 11/12/07						
					Joseph Hsia 11/12/07						
sheet index	revision sheet	A	A	A	A						
		1	2	3	4						

Pro/E

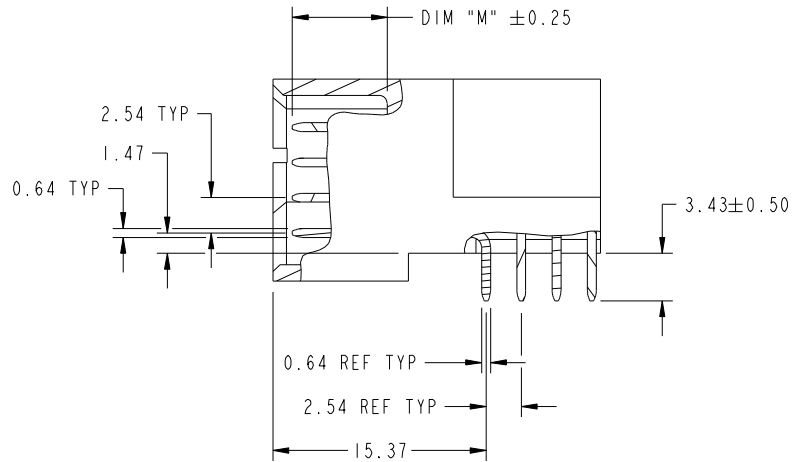
cage code 22526

Tous droits strictement reserves. Reproduction ou communication a des tiers interdite sous quelque forme que ce soit sans autorisation écrite du propriétaire. Propriete de c FCI. Droits de reproduction FCI.

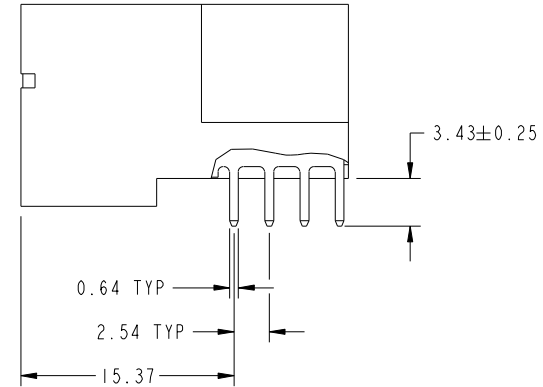
All rights strictly reserved. Reproduction or issue to third parties in any form whatever is not permitted without written authority from the proprietor. Property of FCI. Copyright FCI.



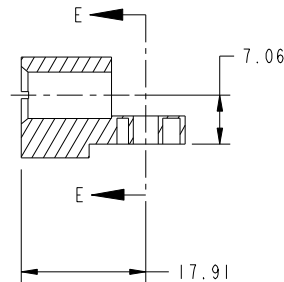
PRODUCT NUMBER
51939-330-
NOTE: 3



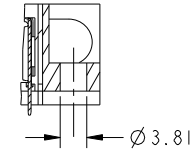
BROKEN-OUT SECTION A-A
SCALE 2:1



BROKEN-OUT SECTION B-B
SCALE 2:1



SECTION C-C



PARTIAL SECTION E-E

mat'l code				SEE NOTE 2		tolerances unless otherwise specified		CUSTOMER		FCI	
ltr	ecn no.	dr	date	linear	0.X ±0.3	projection	1st angle	COPY		www.fciconnect.com	
A				angles	0.XX ±0.13	MIM		title		2P + 24S + 2P	
				dr	0.XXX ±0.051	1:1		product family		PwrBlade	
				enr	0° ±2°	scale		size		code	
				chr	Sincere He 11/12/07	A		dwg no		213	
				appd	Sincere He 11/12/07	A		51939-330		sheet	
					Gary Hsieh 11/12/07					2 of 4	
					Joseph Hsia 11/12/07						
sheet index		revision sheet									

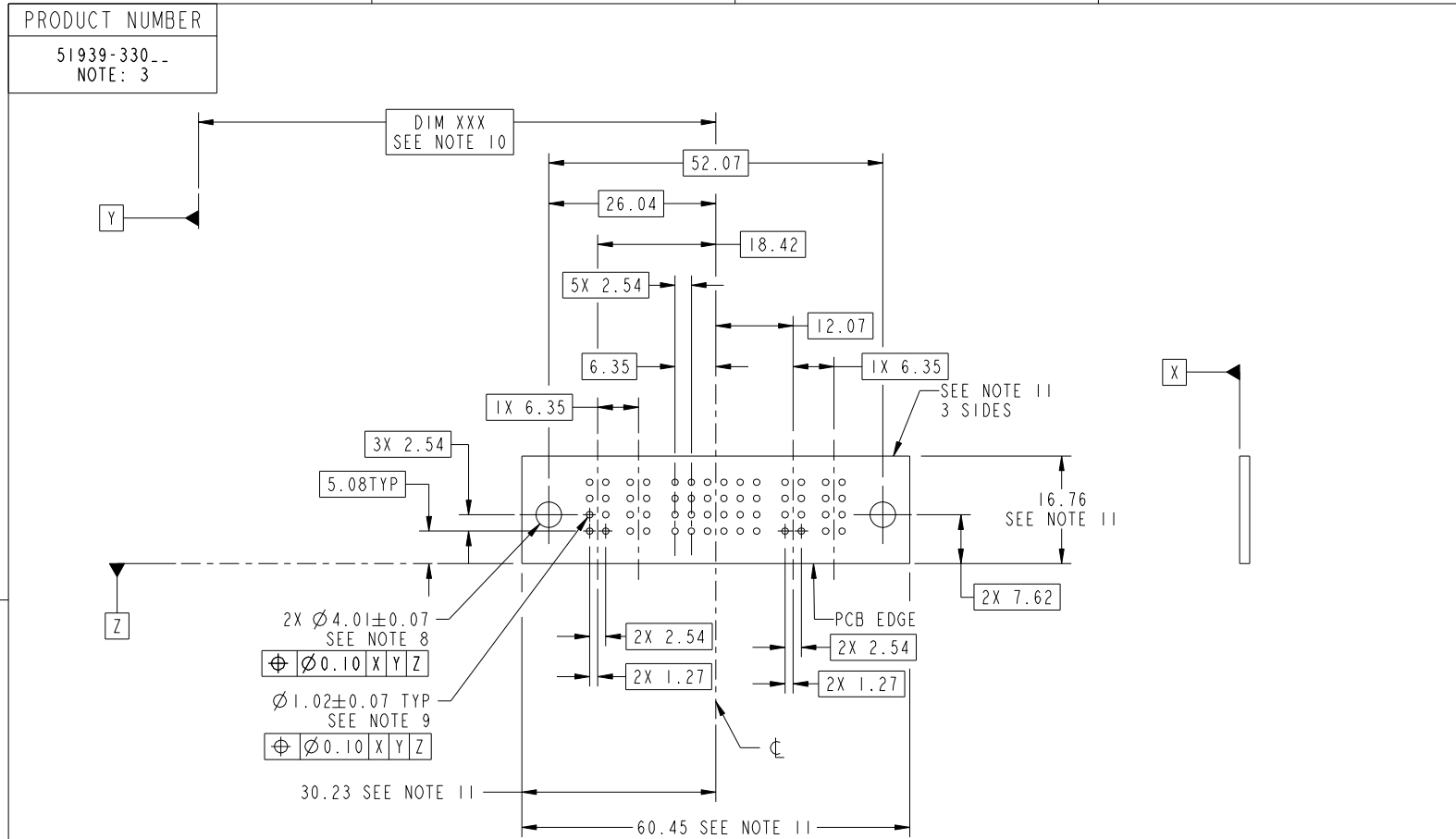
cage code 22526

Pro/E

Tous droits strictement reserves. Reproduction ou communication a des tiers interdite sous quelque forme que ce soit sans autorisation écrite du propriétaire. Propriete de c FCI. Droits de reproduction FCI.



All rights strictly reserved. Reproduction or issue to third parties in any form whatever is not permitted without written authority from the proprietor. Property of FCI. Copyright FCI.



RECOMMENDED PCB LAYOUT

mat'l code		SEE NOTE 2		tolerances unless otherwise specified		CUSTOMER		 www.fciconnect.com	
ltr	ecn no.	dr	date	linear	0.X ± 0.3	COPY		title	
A					0.XX ± 0.13	projection		2P + 24S + 2P	
				angles	0.XXX ± 0.051			RIGHT ANGLE SOLDER HEADER	
				dr	Sincere He 11/12/07	MIM		product family	PwrBlade
				enr	Sincere He 11/12/07			code	213
				chr	Gary Hsieh 11/12/07	scale		size	dwg no
				appd	Joseph Hsia 11/12/07	1:1		A	51939-330
sheet index	revision sheet							sheet	3 of 4

cage code 22526

Pro/E

Tous droits strictement reserves. Reproduction ou communication a des tiers interdite sous quelque forme que ce soit sans autorisation écrite du propriétaire. Propriete de c FCI. Droits de reproduction FCI.



All rights strictly reserved. Reproduction or issue to third parties in any form whatever is not permitted without written authority from the proprietor. Property of FCI. Copyright FCI.

PRODUCT NUMBER
51939-330-
NOTE: 3

NOTES:

1. DIMENSIONS AND TOLERANCES ARE IN ACCORDANCE WITH ASME Y14.5M, 1994 UNLESS OTHERWISE SPECIFIED.

CONNECTOR NOTES:

- 2. HOUSING MATERIAL: UL 94 V-0 GLASS FILLED
HIGH-TEMP THERMOPLASTIC
POWER CONTACT MATERIAL: COPPER ALLOY
SIGNAL PIN MATERIAL: COPPER ALLOY
- 3. 51939-330; 51939-330LF PLATING SPEC. SEE PRINT:10064183
- 4. MANUFACTURER'S NAME, P/N, AND DATE CODE TO APPEAR ON THIS SURFACE.
- 5. PRODUCT SPECIFICATION GS-12-149.
APPLICATION SPECIFICATION BUS-20-067.
- 6. PACKAGED IN TRAYS.

PCB NOTES:

- 7. ALL HOLE DIAMETERS ARE FINISHED HOLE SIZE.
- 8. MOUNTING HOLES, WHERE APPLICABLE, ARE UNPLATED.
- 9. $\varnothing 1.151 \pm 0.025$ DRILLED HOLES PLATED WITH
0.008 MIN SnPb OR Sn OVER 0.03
TO 0.08 Cu PLATING TO ACHIEVE
 $\varnothing 1.02 \pm .07$ HOLE.
- 10. "DIM XXX" TO BE DETERMINED BY THE CUSTOMER.
- 11. CONNECTOR KEEP-OUT ZONE.

mat'l code		SEE NOTE 2		tolerances unless otherwise specified		CUSTOMER		FCI		www.fciconnect.com	
ltr	ecn no.	dr	date	linear	0.X ± 0.3	COPY		projection	title		
A					0.XX ± 0.13	MIM			2P + 24S + 2P RIGHT ANGLE SOLDER HEADER		
				angles	0.XXX ± 0.051	← MIM →			product family PwrBlade code		
				dr	Sincere He 11/12/07	scale		A	size		213
				enr	Sincere He 11/12/07	1:1			dwg no		sheet
				chr	Gary Hsieh 11/12/07				51939-330		4 of 4
				appd	Joseph Hsia 11/12/07						
sheet index	revision sheet										

cage code 22526

Pro/E