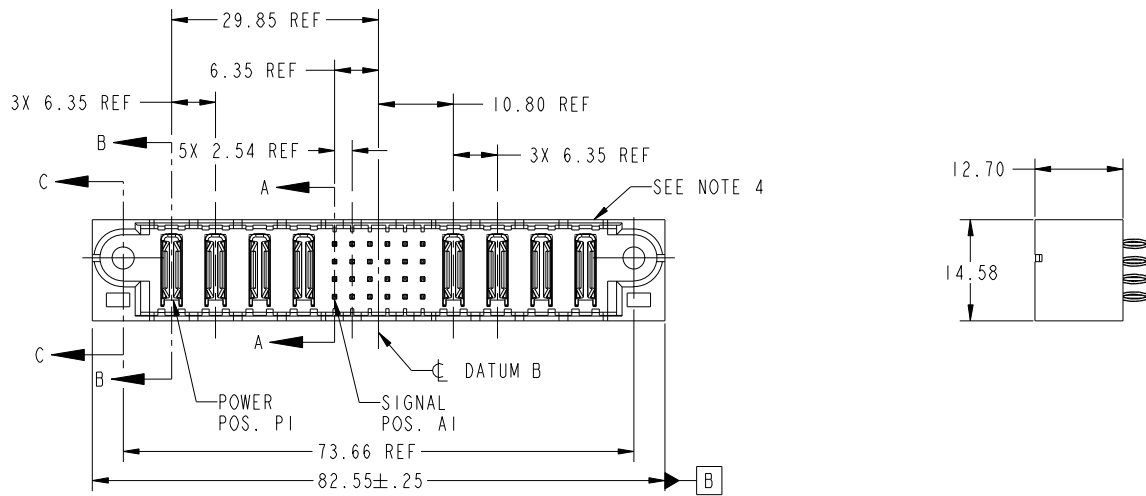


Tous droits strictement reserves. Reproduction ou communication a des tiers interdite sous quelque forme que ce soit sans autorisation écrite du propriétaire. Propriete de c FCI. Droits de reproduction FCI.



All rights strictly reserved. Reproduction or issue to third parties in any form whatever is not permitted without written authority from the proprietor. Property of FCI. Copyright FCI.

PRODUCT NO.	ROWS	POWER				SIGNAL				POWER				E2			
		E1	P1	P2	P3	P4	1	2	3	4	5	6	P5		P6	P7	P8
51952-105-- NOTE ③	D C B A		PC	PC	PC	PC	G	G	G	G	G	G	PC	PC	PC	PC	



CODE	DIM "M" MATING LENGTH	CONTACT TYPE
PC	[N/A]	POWER
G	[6.86]	SIGNAL

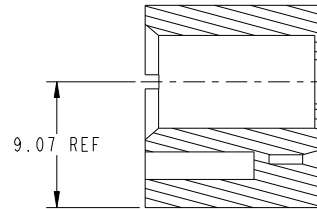
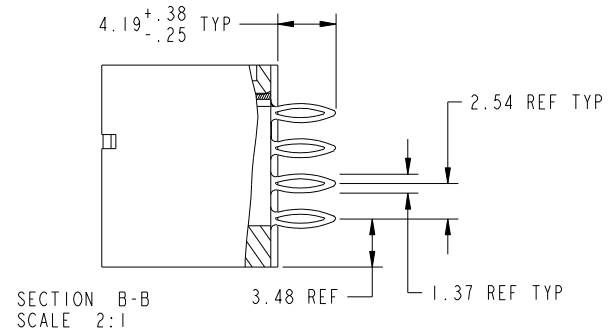
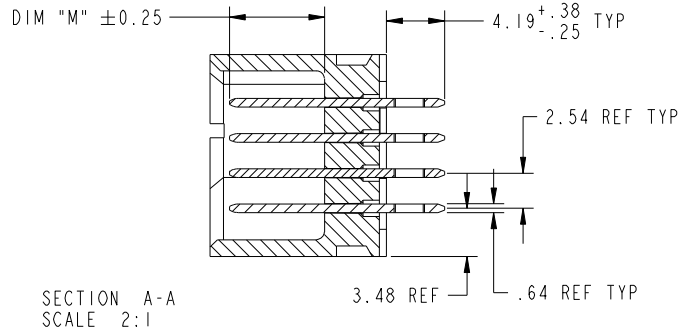
mat'l code				tolerances unless otherwise specified		CUSTOMER			
ltr	ecn no.	dr	date	linear	0.X ± 0.3	COPY		www.fciconnect.com	
A	DG06-0472	JULIA	11/16/06	angles	0.XX ± 0.13	projection		title 4P + 24S + 4P VERTICAL PRESS-FIT HEADER	
				dr	0.XXX ± 0.051			product family PwrBlade code 213	
				enr	0° ± 2°	MIM		size dwg no 51952-105 sheet 1 of 4	
				chr	JULIA WANG 10/16/06	scale 1:1		cage code 22526	
				appd	RYAN YUAN 11/16/06				
					GARY HSIEH 11/16/06				
					JOSEPH HSIA 11/16/06				
sheet index	revision sheet	A 1	A 2	A 3	A 4				

Tous droits strictement reserves. Reproduction ou communication a des tiers interdite sous quelque forme que ce soit sans autorisation ecrite du proprietaire. Propriete de c FCI. Droits de reproduction FCI.

All rights strictly reserved. Reproduction or issue to third parties in any form whatever is not permitted without written authority from the proprietor. Property of FCI. Copyright FCI.



PRODUCT NUMBER
51952-105__
NOTE 3



SECTION C-C
SCALE 2:1

mat'l code				tolerances unless otherwise specified		CUSTOMER		 www.fciconnect.com	
ltr	ecn no.	dr	date	linear	0.X ±0.3	COPY		title	
A					0.XX ±0.13	projection		4P + 24S + 4P	
				angles	0.XXX ±0.051			VERTICAL PRESS-FIT HEADER	
				dr	0° ±2°			product family PwrBlade code	
				enr	JULIA WANG 10/16/06	scale		213	
				chr	RYAN YUAN 11/16/06	1:1		sheet	
				appd	GARY HSIEH 11/16/06	A		51952-105	
					JOSEPH HSIA 11/16/06			2 of 4	
sheet index		revision sheet							

cage code 22526

Pro/E

Tous droits strictement reserves. Reproduction ou communication a des tiers interdite sous quelque forme que ce soit sans autorisation écrite du propriétaire. Propriete de c FCI. Droits de reproduction FCI.



All rights strictly reserved. Reproduction or issue to third parties in any form whatever is not permitted without written authority from the proprietor. Property of FCI. Copyright FCI.

PRODUCT NUMBER
51952-105--
NOTE 3

NOTES:

1. DIMENSIONS AND TOLERANCES ARE IN ACCORDANCE WITH ASME Y14.5M, 1994 UNLESS OTHERWISE SPECIFIED.

CONNECTOR NOTES:

- 2 HOUSING MATERIAL: UL 94 V-0 GLASS FILLED
HIGH-TEMP THERMOPLASTIC
POWER CONTACT MATERIAL: COPPER ALLOY
SIGNAL PIN MATERIAL: COPPER ALLOY
 - 3. PLATING:
51952-105 ,51952-105LF PLATING SPEC. WAS SHOWN IN THE PRINT OF 10064183.
 - 4 MANUFACTURER'S NAME, P/N, AND DATE CODE TO APPEAR ON THIS SURFACE.
 - 5. PRODUCT SPECIFICATION GS-12-149.
APPLICATION SPECIFICATION BUS-20-067.
 - 6. PACKAGED IN TRAYS.
- PCB NOTES:
- 7. ALL HOLE DIAMETERS ARE FINISHED HOLE SIZE.
 - 8. MOUNTING HOLES, WHERE APPLICABLE, ARE UNPLATED.
 - 9 $\varnothing 1.151 \pm 0.025$ DRILLED HOLES PLATED WITH
0.008 MIN SnPb OR Sn OVER 0.03
TO 0.08 Cu PLATING TO ACHIEVE
 $\varnothing 1.02 \pm 0.07$ HOLE.
 - 10 "DIM XXX" TO BE DETERMINED BY THE CUSTOMER.
 - 11 CONNECTOR KEEP-OUT ZONE.
12. FOR PRESS FIT APPLICATION USE FCI CAM TOOL 430169-XXX.

mat'l code				tolerances unless otherwise specified		CUSTOMER		FCI		www.fciconnect.com	
ltr	ecr no.	dr	date	linear	0.X ± 0.3	COPY					
A					0.XX ± 0.13	projection		title 4P + 24S + 4P			
				angles	0.XXX ± 0.051			VERTICAL PRESS-FIT HEADER			
				dr	0° ± 2°	MIM		product family PwrBlade		code 213	
				enr	JULIA WANG 10/16/06			size		sheet 4 of 4	
				chr	RYAN YUAN 11/16/06	scale		dwg no		213	
				appd	GARY HSIEH 11/16/06	1:1		A		51952-105	
					JOSEPH HSIA 11/16/06						
sheet index		revision sheet									

cage code 22526

Pro/E