

PRODUCT NUMBER
91601-XXXXLF

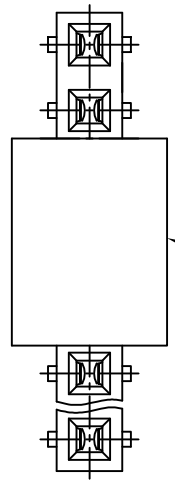
INDICATES THE PRODUCT IS ROHS COMPATIBLE, NOTE 6.

- A: TAPE & REEL PACKAGING, HOUSING AND PICK-UP CAP COLOUR GREY
 - G: TAPE & REEL PACKAGING, HOUSING AND PICK-UP CAP COLOUR BLACK FOR AVAILABILITY, SEE TA856.
 - AV: TAPE & REEL PACKAGING FOR VALEO, HOUSING AND PICK-UP CAP COLOUR GREY.
- NUMBER OF POSITIONS: 02 UP TO 25.
MORE THAN 25 POSITIONS ON SPECIAL REQUEST.

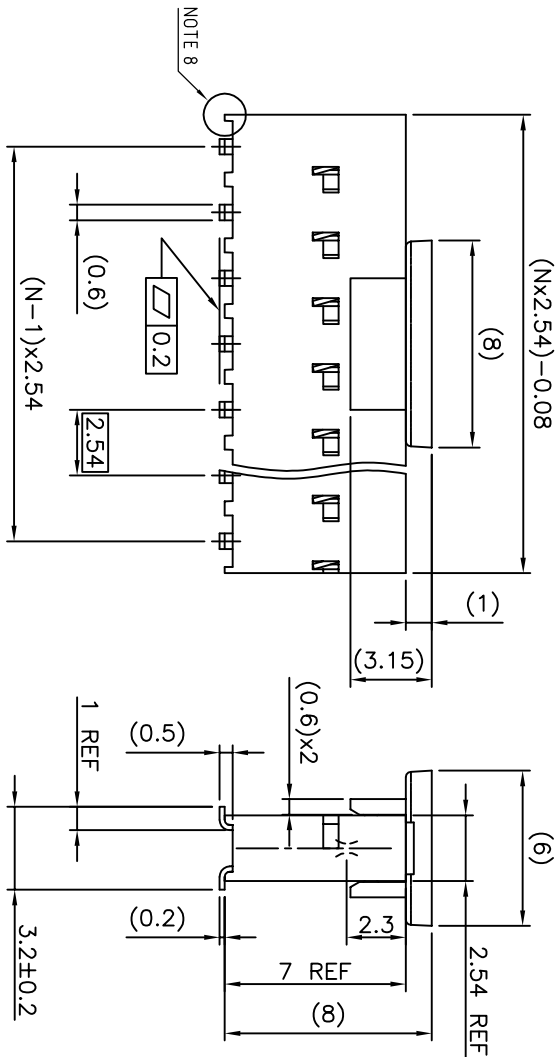
- PLATING CODE
- 3= 0.76µm GOLD ON CONTACT AREA.
 - 2µm MIN MATTE TIN ON TAIL.
 - 4= 2µm MIN MATTE TIN FULL PLATED
 - 1.27µm Ni MIN UNDERPLATING

NOTES:

- 1 - HOUSING & PICK UP CAP MATERIAL: HIGH TEMPERATURE THERMOPLASTIC GLASS FILLED FLAME RETARDANT PER UL 94 COLOR: GREY or BLACK
- 2 - TERMINAL MATERIAL: PHOSPHOR BRONZE.
- 3 - 2 UP TO 4 POSITIONS PRODUCT PACKED IN PLASTIC BOX.
- 5 UP TO 30 POSITIONS PRODUCT PACKED IN TUBE.
- 4 - TO DETERMINE DIMENSIONS:
N = NUMBER OF POSITIONS
EXAMPLE: 8 POS: (Nx2.54)-0.08=20.24 mm.
- 5 - RECOMMENDED IR PROFILE PER TA842.
- 6 - ROHS COMPATIBLE PRODUCT SPECIFICATIONS
- d - PLATING:
- "LF" MEANS THE PRODUCT IS LEAD-FREE,
2µm MINIMUM MATTE TIN OVER 1.27µm MINIMUM NICKEL UNDERPLATE.
- b - MANUFACTURING PROCESS COMPATIBILITY
- THE HOUSING WILL WITHSTAND EXPOSURE TO 260°C PEAK TEMPERATURE FOR 30 SECONDS MAX IN A CONVECTION, INFRARED OR VAPOR PHASE OR REFLOW OVEN.
- c - LABELING:
- MEETS PACKAGING SPECS AS PER GS-14-920
- d - LEGAL STATEMENT: SEE GS-47-0004
- 7 - HOUSING MADE FROM HIGH TEMPERATURE HALOGEN FREE RESIN 30% GLASS FILLED FLAME RETARDANT PER UL-94V-0 BLACK COLOUR. OMIT 'HF' FROM PRODUCT NUMBER IF HTS OPTION IS NOT REQUIRED
- 8 - END STAND-OFFS FOR 1x2 UP TO 1x5 POS
NO END STAND-OFFS FOR 1x6 UP TO 1x50 POS

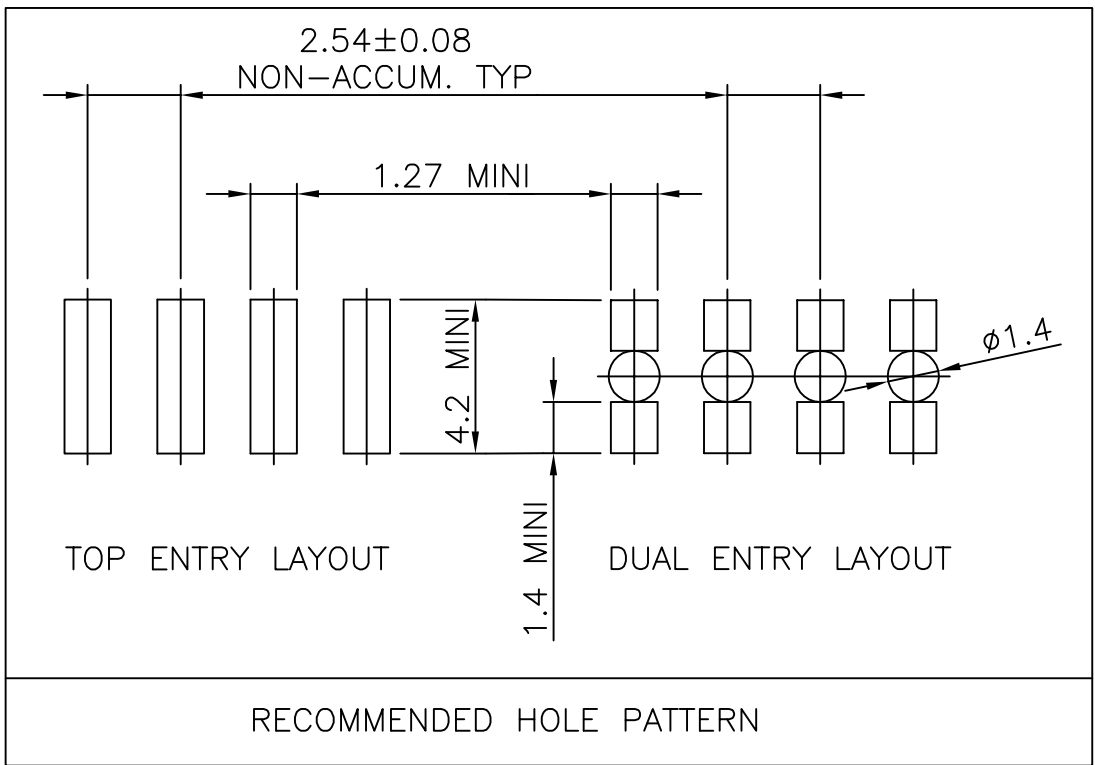


OPTIONAL PICK UP CAP



NOTE 8

mat'l. code		surface		tolerance		projection		product family	
SEE NOTES		ISO 1302		ISO 406 ISO 101		mm		DUBOX	
ltr	ecm no	dr	date	tolerances unless otherwise specified	angle	linear	scale	title	product family
AD	F10-0228	JCO	10.10.04		0±.3		mm	BtB RECEIPT	DUBOX
AE	F11-0093	JCO	11.08.18		0±.3		mm	VERT SR SMT	DUBOX
AF	F11-0043	LWU	12.02.23	0±.2	0.00±.00x		scale 5:1		
AG	B-19176	LWU	14.10.21	dr	D	LEGRAND	96.10.11		
				engr	P	NIZZI	96.10.11		
AB	F07-0243	PNZ	07.08.14	chr	P	LE	96.10.11		
AC	F08-0102	PNZ	08.01.18	qppd	P	NZ	96.10.11		
sheet	revision	AG	B						
index	sheet	1	2						



FCIconnect.com

Copyright FCI

mat'l. code SEE NOTES				surface ISO 1302 ✓	tolerance ISO 406 ISO 1101	projection 	product family DUBOX			
ltr	ecn no	dr	date	tolerances unless otherwise specified		mm ←→ scale 1:1	title BtB RECEPT. VERT SR SMT			
A	F04-0347	DLE	04.11.10	angles	.XX ±0.15					
B	F06-0204	DLE	06.06.23	linear	XX ±0.05					
					±2'		dwg no		sheet 2 of 2	size
				dr	D LEGRAND	96.10.11	91601			A4
				enr	P NIZZI	96.10.11	type Product Customer Drawing			
				chr	D LE	96.10.11				
				appd	P NZ	96.10.11				
sheet index	revision sheet									

Mouser Electronics

Authorized Distributor

Click to View Pricing, Inventory, Delivery & Lifecycle Information:

FCI:

[91601-322LF](#)