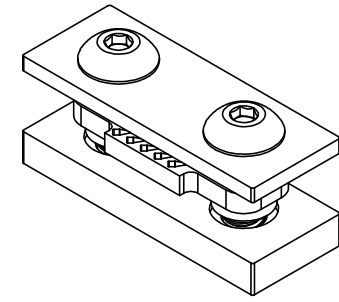
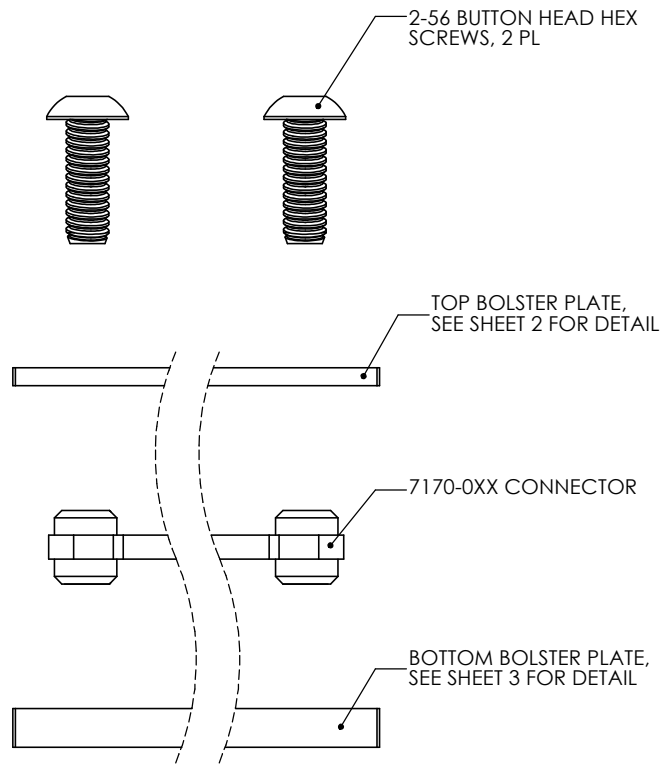


REVISIONS			
REV	DESCRIPTION	DATE	DWN
2	ADD -1XX SERIES AND RELEASE	3/25/08	KB



-001 SHOWN

THIS DOCUMENT CONTAINS CONFIDENTIAL AND PROPRIETARY INFORMATION OF AMPHENOL INTERCON SYSTEMS AND MAY NOT BE DISCLOSED, REPRODUCED OR OTHERWISE USED WITHOUT WRITTEN PERMISSION

Amphenol
InterCon
Systems

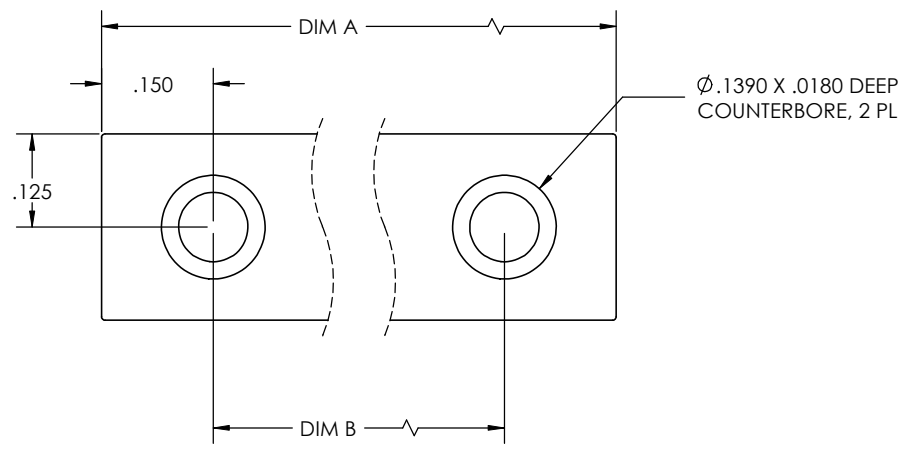
AMPHENOL INTERCON SYSTEMS INC.
HARRISBURG, PA 17110

NAME
CSTACK HARDWARE CONNECTOR KIT FOR 7170-0XX AND .040"-.055" THK PC BOARDS

SIZE B	PROD CODE 32	DRAWING NUMBER C- 9527	REV 2
------------------	-----------------	---------------------------	----------

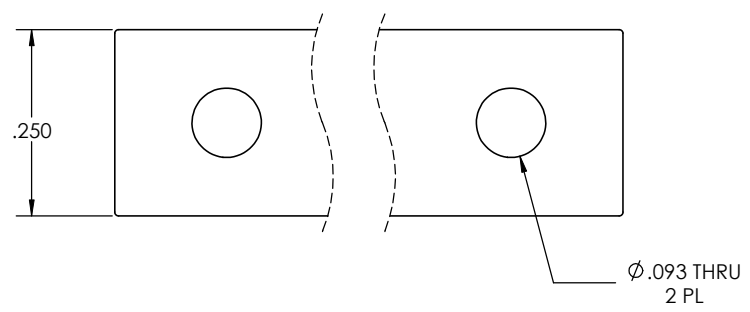
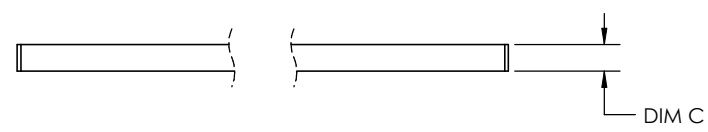
SCALE 1:1 CUSTOMER SHEET 1 OF 4





TOP BOLSTER PLATE

PART NUMBER	DIMENSION A	DIMENSION B	DIMENSION C
9527-001	.657	.357	.040
9527-002	.854	.554	.040
9527-003	1.051	.751	.067
9527-004	1.248	.948	.067



THIS DOCUMENT CONTAINS CONFIDENTIAL AND PROPRIETARY INFORMATION OF AMPHENOL INTERCON SYSTEMS AND MAY NOT BE DISCLOSED, REPRODUCED OR OTHERWISE USED WITHOUT WRITTEN PERMISSION

Amphenol
Inter-Con
Systems

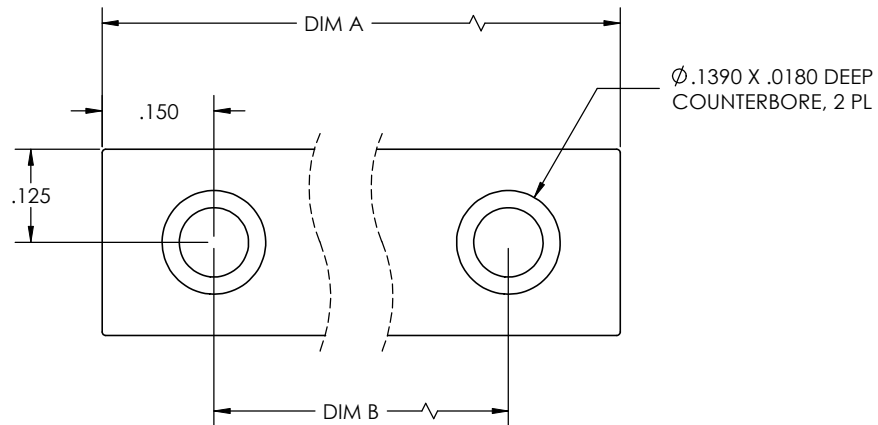
AMPHENOL INTERCON SYSTEMS INC.
HARRISBURG, PA 17110

NAME
CSTACK HARDWARE CONNECTOR KIT FOR
7170-0XX AND .040"-.055" THK PC BOARDS

SIZE B	PROD CODE 32	DRAWING NUMBER C- 9527	REV 2
------------------	-----------------	---------------------------	----------

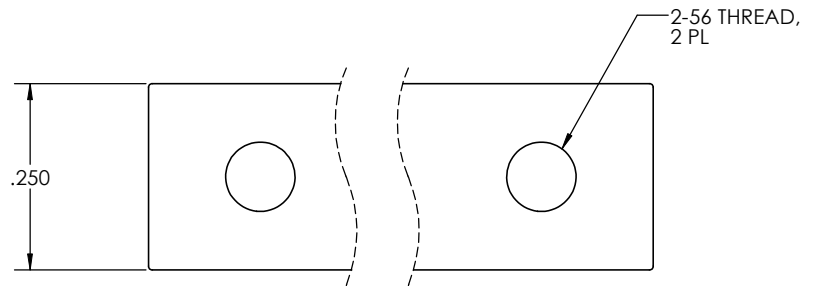
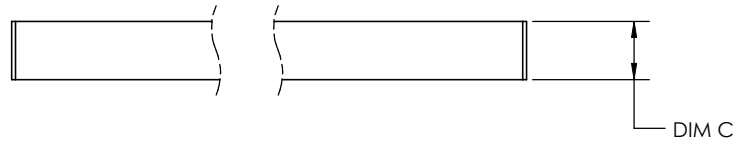
SCALE 8:1 CUSTOMER SHEET 2 OF 4





BOTTOM BOLSTER PLATE

PART DIMENSIONS	DIMENSION A	DIMENSION B	DIMENSION C
9257-001	.657	.357	.095
9527-002	.854	.554	.095
9527-003	1.051	.751	.095
9527-004	1.248	.948	.095



THIS DOCUMENT CONTAINS CONFIDENTIAL AND PROPRIETARY INFORMATION OF AMPHENOL INTERCON SYSTEMS AND MAY NOT BE DISCLOSED, REPRODUCED OR OTHERWISE USED WITHOUT WRITTEN PERMISSION

Amphenol InterCon Systems AMPHENOL INTERCON SYSTEMS INC. HARRISBURG, PA 17110


NAME: **STACK HARDWARE CONNECTOR KIT FOR 7170-0XX AND .040"-.055" THK PC BOARDS**

ALL DIMENSIONS AND TOLERANCES PER ASME Y14.5M-1994	THIRD ANGLE PROJECTION	SIZE B	PROD CODE 32	DRAWING NUMBER C- 9527	REV 2
INSPECTION	TOLERANCES UNLESS SPECIFIED OTHERWISE	SCALE 8:1	CUSTOMER		SHEET 3 OF 4
◇ FIRST PIECE	2PLC ± .010				
△ SPC	3PLC ± .005				
○ IN-PROCESS	4PLC ± .002				
	ANGLES ± 1°				
MATERIAL ①	FINISH ②				

PART NUMBER	DESCRIPTION	PCB THICKNESS	PACKAGING
9527-001	HARDWARE KIT FOR 7170-005, SCREW LENGTH .250"	.040"	NOTE (3)
9527-002	HARDWARE KIT FOR 7170-010, SCREW LENGTH .250"	.040"	NOTE (3)
9527-003	HARDWARE KIT FOR 7170-015, SCREW LENGTH .3125"	.040" - .055"	NOTE (3)
9527-004	HARDWARE KIT FOR 7170-020, SCREW LENGTH .3125"	.040" - .055"	NOTE (3)
9527-101	HARDWARE KIT FOR 7170-005, SCREW LENGTH .250"	.040"	NOTE (5)
9527-102	HARDWARE KIT FOR 7170-010, SCREW LENGTH .250"	.040"	NOTE (5)
9527-103	HARDWARE KIT FOR 7170-015, SCREW LENGTH .3125"	.040" - .055"	NOTE (5)
9527-104	HARDWARE KIT FOR 7170-020, SCREW LENGTH .3125"	.040" - .055"	NOTE (5)

NOTES:

1. MATERIALS -
 CONNECTOR: LIQUID CRYSTAL POLYMER, UL 94V-0.
 CONTACT: .0017 THICK BeCu, PLATED WITH 20 MICRO-INCHES MIN HARD GOLD OVER 10 MICRO-INCHES MIN SOFT GOLD OVER 30 TO 70 MICROINCHES OF SULFAMATE NICKEL.
 BUTTON HEAD SCREW: STAINLESS STEEL.
 BOLSTER PLATES: COLD ROLLED STEEL WITH PPG POWERCRON 590-534"E-COATING."
2. CONNECTOR IS ELECTRICALLY TESTED FOR SHORTS AND OPENS.
- (3) EACH COMPONENT IS PACKAGED SEPARATELY IN BULK. ALL COMPONENTS WILL BE SHIPPED IN ONE BOX - UNLESS QUANTITIES PROHIBIT THIS.
4. DETAILS OF THE cSTACK CONNECTOR CAN BE FOUND ON PRINT 7170c.
- (5) INDIVIDUAL KIT PACKAGING.

THIS DOCUMENT CONTAINS CONFIDENTIAL AND PROPRIETARY INFORMATION OF AMPHENOL INTERCON SYSTEMS AND MAY NOT BE DISCLOSED, REPRODUCED OR OTHERWISE USED WITHOUT WRITTEN PERMISSION		 AMPHENOL INTERCON SYSTEMS INC. HARRISBURG, PA 17110	
ALL DIMENSIONS AND TOLERANCES PER ASME Y14.5M-1994		THIRD ANGLE PROJECTION	
INSPECTION ◇ FIRST PIECE △ SPC ○ IN-PROCESS		TOLERANCES UNLESS SPECIFIED OTHERWISE 2PLC ±.010 3PLC ±.005 4PLC ±.002 ANGLES ± 1°	
MATERIAL (1)		FINISH	
NAME cSTACK HARDWARE CONNECTOR KIT FOR 7170-0XX AND .040"-.055" THK PC BOARDS		SIZE B	PROD CODE 32
DRAWING NUMBER C- 9527		REV 2	
SCALE 8:1		CUSTOMER	
SHEET 4		OF 4	

