

ELECTRICAL DATA

- Current at AMB. 5A
- I max 7.5A
- Contact resistance $\leq 7.3\text{m}\Omega$
- Insulation resistance $\geq 5000\text{M}\Omega$
- TEST VOLTAGE $\geq 1000\text{V}$
- contact/contact $\geq 1200\text{V}$
- contact/ground $\geq 1200\text{V}$

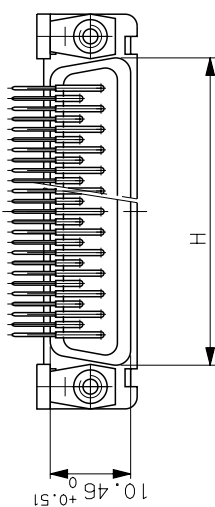
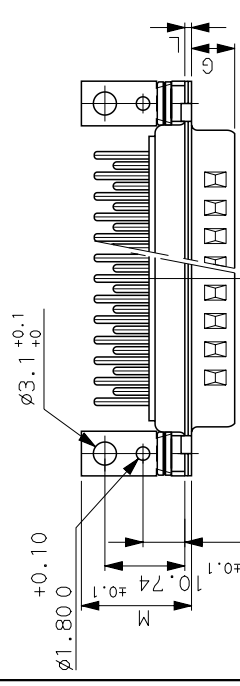
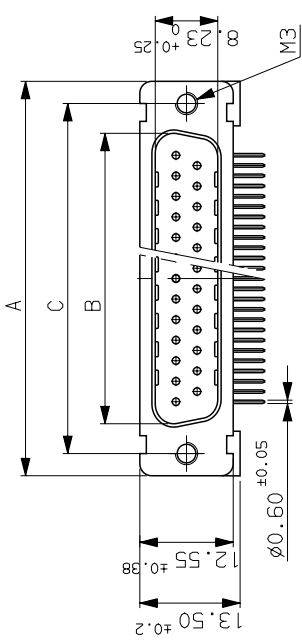
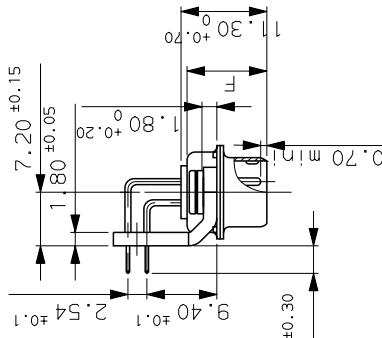
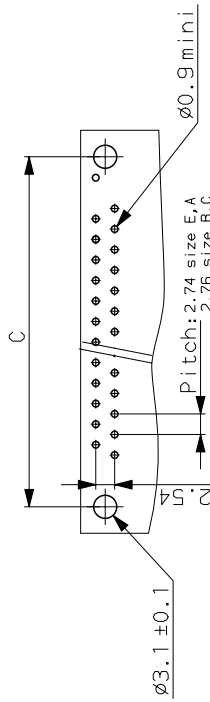
MECHANICAL DATA

- Mechanical endurance ≥ 500
- Material shell steel, tin plated
- Material insulator glass Filled thermoplastic UL94V0
- Material contacts Pin,brass
- Finish on contact area gold (0.4 μ mini) over nickel
- Finish on termination end bright tin-lead over nickel

ENVIRONMENTAL DATA

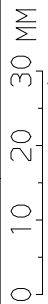
- Climatic category -55/125/21

PC BOARD LAYOUT



Dimensions are in millimeters

Shell Number of size contacts	A ₀ ^{+0.76}	B ₀ ^{+0.25}	C ₀ ^{±0.12}	F ₀ ^{+0.51}	G	H ₀ ^{+0.51}	L ₀ ^{+0.22}	M ₀ ^{±0.20}	PART NUMBER
E 09	30.43	16.79	24.99	10.47	5.90	19.02	0.80	14.80	DEPL09P500MTX
A 15	38.76	25.12	33.32	10.47	5.90	27.25	0.80	14.80	DAPL15P500MTX
B 25	52.65	38.84	47.04	10.56	5.70	41.02	0.80	14.80	DBPL25P500MTX
C 37	68.94	55.30	63.50	10.56	5.70	57.45	1.00	15.00	DCPL37P500MTX



01/08/00	creation of drawing	MOD N°	--
ISS DATE	Lastest modification by : MASSON	CLIENT	CLIENT
Designed by : MASSON	date:01/08/00	Type of drawing:	CLIENT
Checked by : PESSON	date: ---	Released by:	---
TITLE : PINS CONNECTORS D SUB RIGHT ANGLED SPILL WITH METAL BRACKET			
SCALE	Special mfg:--	MATERIAL:--	N°: --
1.5	Item List n°: --	General linear Tolerances: --	Geometrical Tolerances see NF E 04-552
General linear Tolerances: --		General machining surface texture: --	
SHEET 01		This document is the property of FRAMATOME CONNECTORS FRANCE It must not be reproduced or communicated without permission in writing from the owners	
FRAMATOME CONNECTORS FRANCE Rue Louis Bréguet - Bp 05 72024 LE MANS Cedex Tel. 33 (16) 43.84.08.43		SOURIAU DRG N°	
FORMAT A3		PROJECT M94D001	