

ELECTRICAL DATA

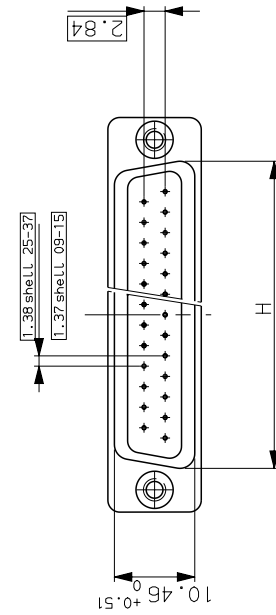
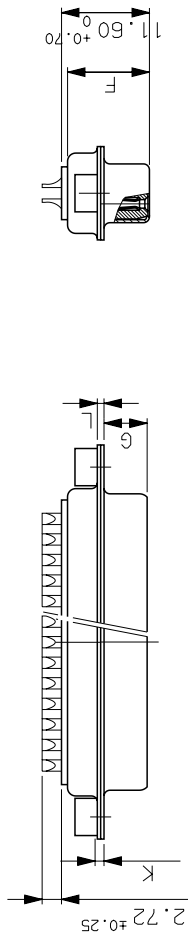
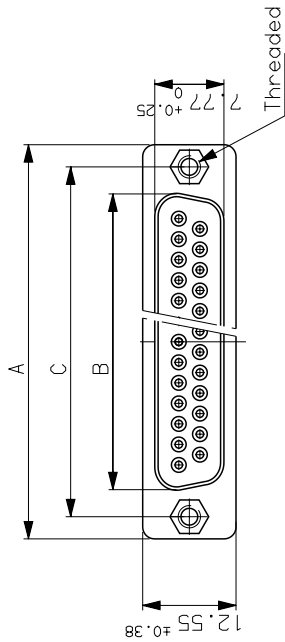
- I max 7.5A
- Contact resistance ≤ 7.3 m Ω
- Insulation resistance > 5000 M Ω
- TEST VOLTAGE contact/contact ≥ 1000 V
- contact/ground ≥ 1200 V

MECHANICAL DATA

- Contact force > 0.20 N
- Retention force > 40 N
- Insertion force according to DIN41652 Part 2
- Withdrawal force according to DIN41652 Part 2
- Mechanical endurance :200 matings / unmatings
- Material shell steel, bright tin-lead
- Material insulator glass filled thermoplastic UL94V0
- Material contacts brass
- Finish on contact area Flash gold over nickel
- Finish on termination end bright tin-lead over nickel
- Solderability according to DIN 41640 Part 70, test 12a
- Shock according to DIN41640 Part 14, test 6a,50g
- Vibration according to DIN41640 Part 15, test 6d,20g
- 10 to 2000Hz;discontinuity ≤ 1 µs

ENVIRONMENTAL DATA

- Climatic category -55°/+125°/21
- Corrosion salt spray;24h



Shell size	Number of contacts	A	B	C	F	G	H	L	Part number	Part number
E	09	30.43	16.21	24.99	10.64	6.05	19.02	0.80	DEPL095031T	DEP0095031T
A	15	38.76	24.54	33.32	10.64	6.05	27.25	0.80	DAPL155031T	DAP0155031T
B	25	52.65	38.25	47.04	10.64	6.05	41.02	0.80	DBPL255031T	DBP0255031T
C	37	68.94	54.71	63.50	10.64	6.05	57.45	1.00	DCPL375031T	DCP0375031T
									Threaded M3	Threaded UNC4.40

b 25/11/02 . Drawing creation.

ISS DATE Latest modification by : JARRY MOD N°

Designed by: JARRY date:22/11/02 Type of drawing: CLIENT

TITLE :SOCKET CONNECTORS D SUB WITH SOLDER PINS.

SCALE: 1:3

FRAMATOME CONNECTORS FRANCE
Rue Louis Breguet - Bp 05
72024 LE MANS Cedex
Tel. 33 (16) 43.84.08.43

FRAMATOME CONNECTORS FRANCE
This document is the property of FRAMATOME CONNECTORS FRANCE
It must not be reproduced or communicated without permission in writing from the owners

FORMAT A3 SOURIAU DRG N° C01-8637-1599

PROJECT M94D001

