

ELECTRICAL DATA

- I max 7.5A
- Contact resistance $\leq 7.3\text{ m}\Omega$
- Insulation resistance >5000 M Ω
- TEST VOLTAGE
- contact/contact >1000V
- contact/ground >1200V

MECHANICAL DATA

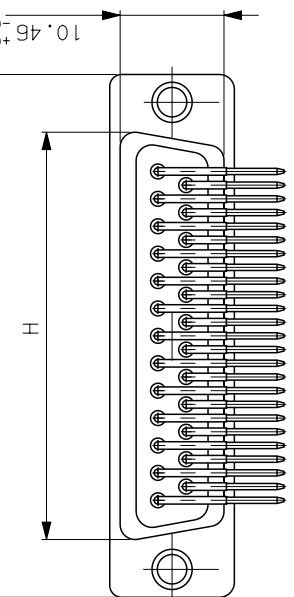
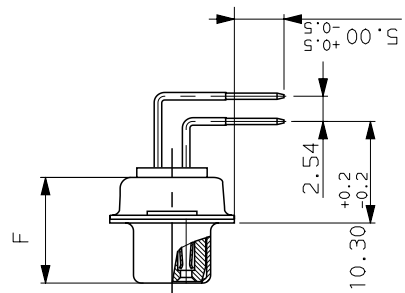
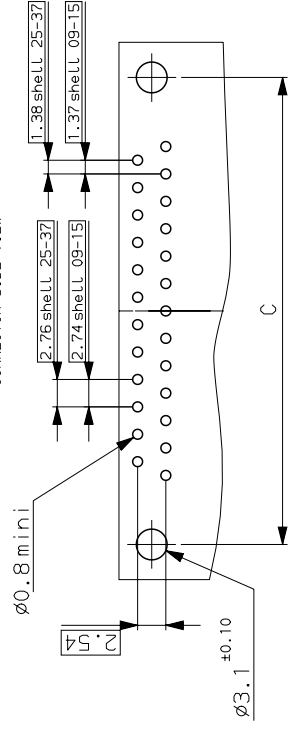
- Contact force >0.14N
- Retention force >40N
- Insertion force according to DIN41652 Part 2
- Withdrawal force according to DIN41652 Part 2
- Mechanical endurance :500 matings / unmatings
- Material shell steel ,brigt tin-Lead
- Material insulator glass filled thermoplastic UL94V0
- Material contacts socket :brass
- Finish on contact area gold over nickel
- Finish on termination end bright tin-Lead over nickel
- Solderability according to DIN 41640 Part 70, test 12a
- Shock according to DIN41640 Part 14, test 6c,50g
- Vibration according to DIN41640 Part 15, test 6d,20g
- 10 to 2000Hz:discontinuity$\leq 1\mu\text{s}$

ENVIRONMENTAL DATA

- Climatic category -55° / +125°/21
- Corrosion salt spray: 24h

Shell size	Number of contacts	A	B	C	F	G	H	L	Part number
E	09	30.43	16.21	24.99	10.64	6.05	19.02	0.78	1.27 μ gold DEP095552CT
A	15	38.76	24.54	33.32	10.64	6.05	27.25	0.78	0.4 μ gold DAP155552CT
B	25	52.65	38.25	47.04	10.64	6.05	41.02	0.78	flash gold DBP255552CT
C	37	68.94	54.71	63.50	10.64	6.05	57.45	0.78	DEP095500CT DAP155531CT DBP255531CT DCP375531CT

LAYOUT DIMENSIONS
CONNECTOR SIDE VIEW



ISS DATE: 29/01/04
 Designed by: JARRY date: 04/04/02
 Type of drawing: CLIENT
 SCALE: 2
 TITLE: SOCKET CNRS SUB D RIGHT ANGLED
 SHEET 1/1
 PROJECT: M94D001
 FRAMATOME CONNECTORS FRANCE
 Rue Louis Breguet - Bp 05
 72024 LE MANS Cedex
 Tel. (33)02.43.78.34.00
 This document is the property of FRAMATOME CONNECTORS FRANCE. It must not be reproduced or communicated without permission in writing from the owners.