

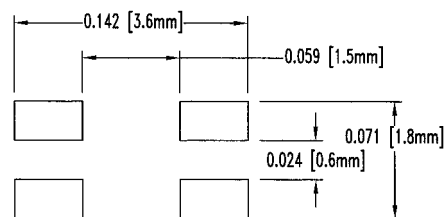
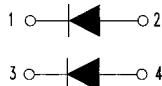
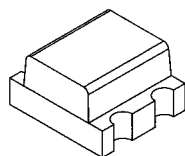
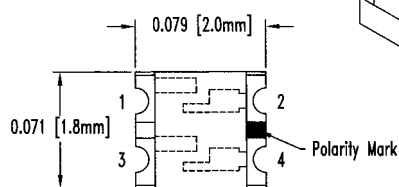
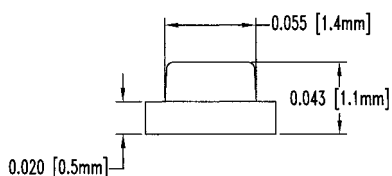


- ◆ Dual-Chip Package
- ◆ Ultra Compact Design
- ◆ Industry Standard Footprint
- ◆ Works With All BivarOpto Light Pipes
- ◆ 3,000 Per Reel, Smaller Quantities Available

SM0807 SERIES

Bi-Color Series

| PART NO. | CHIP | | | ABSOLUTE MAXIMUM RATINGS | | | | ELECTRO-OPTICAL DATA @20mA | | | VIEWING |
|--------------|------------------|--------------|--------------------|--------------------------|------------|--------|----------------|----------------------------|------|-----------------|----------------|
| | EMITTED COLOR | PEAK (nm) | LENS APPEARANCE | $\Delta\lambda$ (nm) | pd (mW) | If(mA) | Peak If(mA) | VF(V) | | Iv Typ (mcd) | ANGLE (deg) |
| | | | | | | | | TYP | MAX | | |
| SM0807BC-RP | RED | 660 | WHITE DIFFUSED | 25 | 100 | 30 | 150 | 1.80 | 2.30 | 19 | 120 |
| | GREEN | 565 | WHITE DIFFUSED | 32 | 100 | 30 | 150 | 2.10 | 2.50 | 13 | 120 |
| SM0807SBC | RED | 640 | WHITE DIFFUSED | 23 | 100 | 30 | 150 | 1.90 | 2.40 | 52 | 120 |
| | GREEN | 575 | WHITE DIFFUSED | 18 | 100 | 30 | 150 | 2.10 | 2.60 | 37 | 120 |
| SM0807BC-H/G | ORANGE | 635 | WHITE DIFFUSED | 44 | 100 | 30 | 150 | 2.00 | 2.50 | 10 | 120 |
| | GREEN | 565 | WHITE DIFFUSED | 30 | 100 | 30 | 150 | 2.20 | 2.70 | 16 | 120 |
| SM0807BC-A/G | AMBER | 610 | WHITE DIFFUSED | 40 | 100 | 30 | 150 | 2.00 | 2.50 | 11 | 120 |
| | GREEN | 565 | WHITE DIFFUSED | 30 | 100 | 30 | 150 | 2.20 | 2.70 | 16 | 120 |
| SM0807BC | RED | 660 | WHITE DIFFUSED | 24 | 100 | 30 | 150 | 1.80 | 2.30 | 20 | 120 |
| | GREEN | 560 | WHITE DIFFUSED | 29 | 100 | 30 | 150 | 2.25 | 2.70 | 11 | 120 |



Recommended Soldering Pattern