

Features

- IEEE 802.3af Ethernet compatible
- Designed for AMD IC manufacturers
- Fully integrated for adapter, hub and motherboard applications
- RoHS compliant*

Applications

- LAN (Local Area Network)
- Ethernet

PT61017PEL LAN 10/100 Base-Tx

Electrical Specifications @ 25 °C

Turns Ratio
 TX ± 3%1CT*:1CT*
 RX ± 3%1CT*:1CT*

Inductance
 Pin 1-3, 6-8 ..350 μH min. @ 100 KHz,
 0.1 Vrms, 8 mA DC Bias

DCR
 Pin 1-3, 6-8 0.6 Ω max.
 Pin 9-11, 14-16..... 1.1 Ω max.

Insertion Loss
 0.1-100 MHz1.1 dB max. (TX/RX)

Return Loss
 30 MHz..... -18 dB min. (TX/RX)
 60 MHz..... -12 dB min. (TX/RX)
 100 MHz..... -10 dB min. (TX/RX)

Common Mode Rejection
 30 MHz..... -40 dB Min. (TX/RX)
 50 MHz..... -40 dB Min. (TX/RX)
 100 MHz..... -40 dB Min. (TX/RX)

Crosstalk
 30 MHz..... -38 dB Min. (TX to RX)
 62 MHz..... -38 dB Min. (TX to RX)
 100 MHz..... -38 dB Min. (TX to RX)

Hipot
 1 mA, 2 sec.1500 VAC (PRI-SEC)

Operating Temperature0 °C to +70 °C

*CT: Center tap

Material

Termination..... Tin

Packaging Specifications

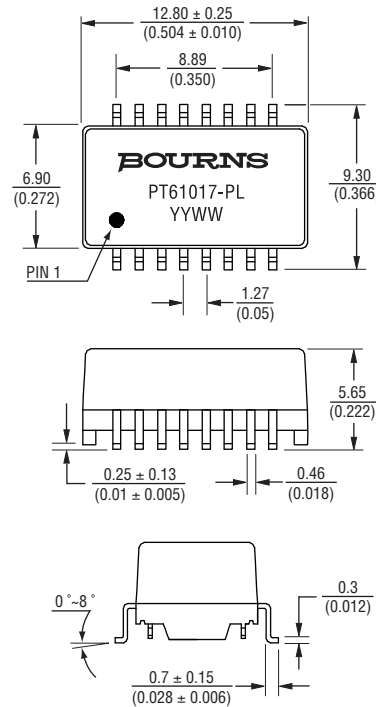
Tape & Reel 600 pcs./reel

How To Order

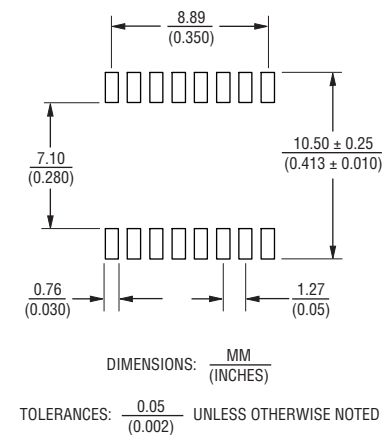
PT61017 P E L

Model _____
 Construction _____
 P = Potted
 Packaging _____
 E = Tape and Reel (600 pcs./reel)
 Termination _____
 L = Tin only (RoHS Compliant)

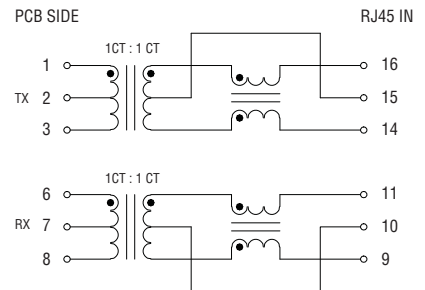
Product Dimensions



Recommended Layout



Electrical Schematic



Packaging Specifications

