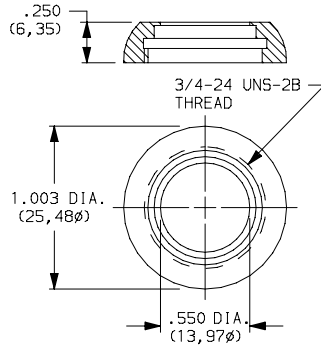


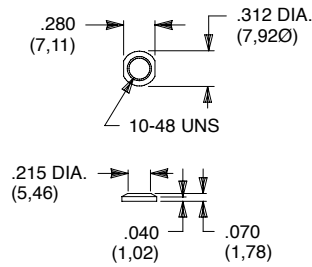
Dress Nuts

Switchlocks: Y, H & A Series



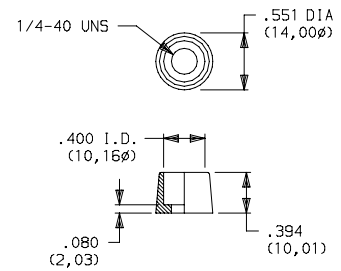
Part Number	Finish
531300201	Nickel plated
175052745	Aluminium black anodize

Toggles: Y Series Pushbuttons: TP Series



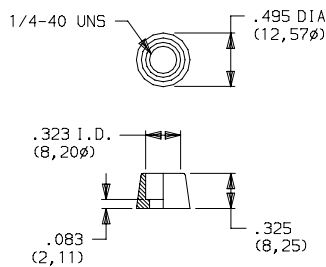
Part Number	Finish
298D01201	Nickel plated

Pushbuttons: 8020, 8060, 8500 & TP Series



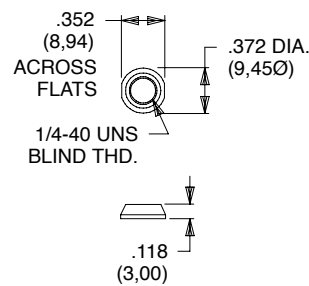
Part Number	Finish
580700201	Nickel plated

Pushbuttons: 8020, 8060, E010 & TP Series



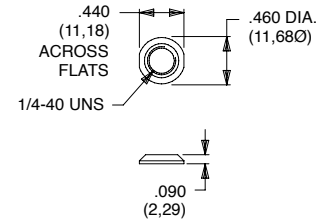
Part Number	Finish
702501201	Nickel plated
702501A56	Black

Toggles: 7000, 9000 , E & T Series Pushbuttons: 8020, 8060, 8500, E010 & TP Series



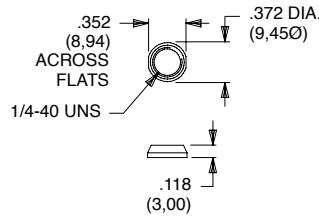
Part Number	Finish
709901201	Nickel plated
709901A56	Black

Toggles: 7000, 9000 , E & T Series Pushbuttons: 8020, 8060, 8500, E010 & TP Series



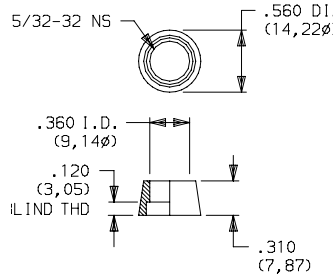
Part Number	Finish
776001201	Nickel plated
776002231	Black

Toggles: 7000, 9000, E & T Series
Pushbuttons: 8020, 8060, 8500, E010 & TP Series



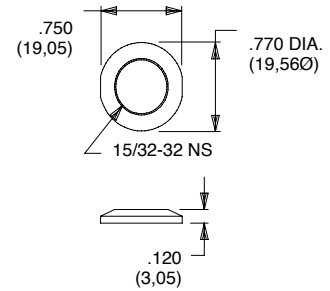
Part Number	
299D01201	Nickel plated
299D01A56	Black

Pushbuttons: 8500 Series



Part Number	
498800201	Nickel plated

Toggles: 7000 & 9000 Series
Pushbuttons: 8500 Series



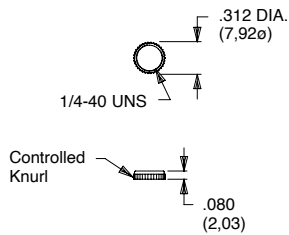
Part Number	
895101201	Nickel plated

Material

Brass, nickel plated standard. Other finishes available, consult Customer Service center.

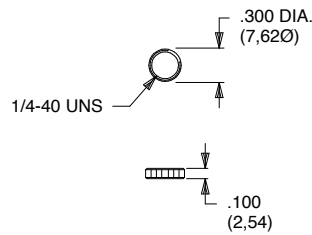
Knurled Nuts

Toggles: 7000, 9000 & T Series
Pushbuttons: 8020, 8060, 8500 & TP Series



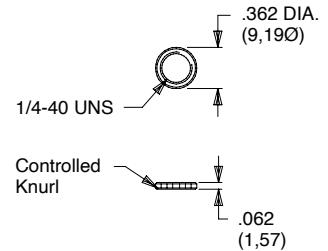
Part Number	
778000201	Nickel plated

Toggles: 7000, 9000, E & T Series
Pushbuttons: 8020, 8060, 8500, E010 & TP Series



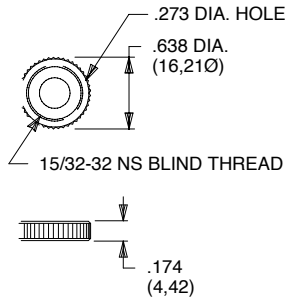
Part Number	
778600201	Nickel plated

Toggles: 7000, 9000 & T Series
Pushbuttons: 8020, 8060, 8500 & TP Series
Fits Gulmite #12 Socket & Wrench 8942-02-201



Part Number	
796901201	Nickel plated

Toggles: 7000 & 9000 Series
Pushbuttons: 8500 Series
Will not fit T, T1, TP & T1P
Toggles



Part Number	
471300201	Nickel plated

Material

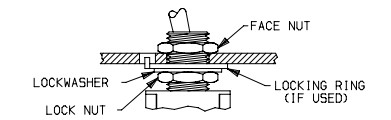
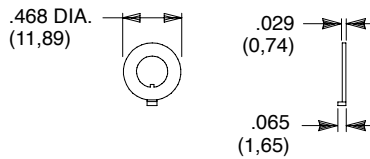
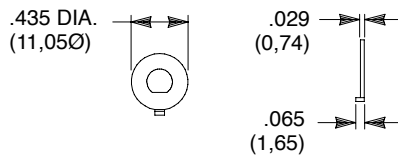
Brass, nickel plated standard. Other finishes available, consult Customer Service center.

Locking Rings

Toggles: T Series
Pushbuttons: TP Series
Fits 10-48 Bushing

Toggles: 7000, 9000 & T Series
Pushbuttons: 8020, 8060, 8500 & TP Series
Rotary: M Series
Fits 1/4-40 Bushing

Panel Mount Assembly



TYPICAL ASSEMBLY WITH LOCKING RING

Part Number	
465000201	Nickel plated with flat

Part Number	
700701201	Nickel plated with keyway

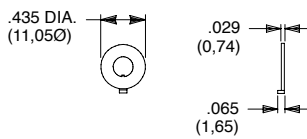
Note:

We recommend that locknut always be used with non-flanged bushings.

Caution

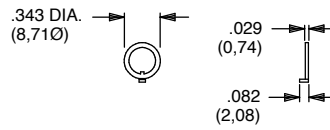
To avoid damaging panel front, always tighten locknut at back of panel. Overtightening mounting nut may cause K2-K12 actuators to bind.

Toggles: T Series
Pushbuttons: TP Series
Fits 10-48 Bushing



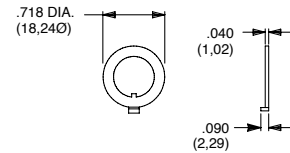
Part Number	
465101201	Nickel plated with keyway

Toggles: 7000, 9000 & T Series
Pushbuttons: 8020, 8060, 8500 & TP Series
Rotary: M Series
Fits 1/4-40 Bushing



Part Number	
753700201	Nickel plated with keyway

Toggles: 7000 & 9000 Series
Pushbuttons: 8500 Series
Fits 15/32 Bushing

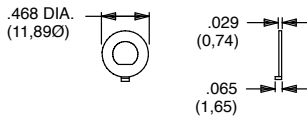


Part Number	
707200201	Nickel plated with keyway

Material

Brass, nickel plated standard. Other finishes available, consult Customer Service Center.

Toggles: 7000, 9000 & T Series
Pushbuttons: 8020, 8060, 8500 & TP Series
Rotary: M Series
Fits 1/4-40 Bushing



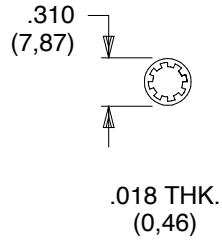
Part Number	
757200201	Nickel plated with flat
757200A56	Black with flat

Material

Brass, nickel plated standard. Other finishes available, consult Customer Service Center.

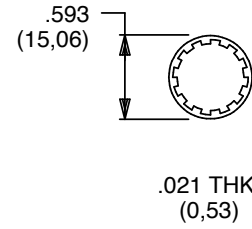
Lockwashers

Toggles: T Series
Pushbuttons: TP Series
Fits 10-48 Bushing



Part Number	
465200202	Nickel plated

Toggles: 7000 & 9000 Series
Pushbuttons: 8500 Series
Fits 15/32 Bushing

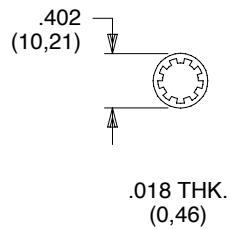


Part Number	
700302202	Nickel plated

Material

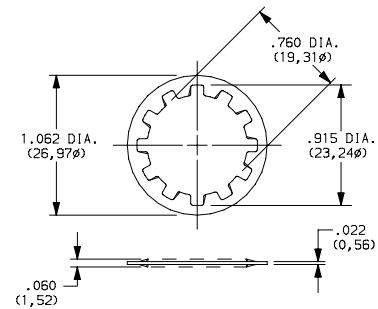
Steel, nickel plated standard. Other finishes available, consult Customer Service Center

Toggles: 7000, 9000, E & T Series
Pushbuttons: 8020, 8060, 8500, E010 & TP Series
Fits 1/4-40 Bushing



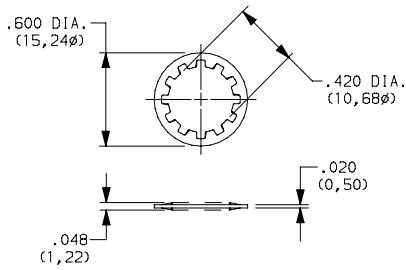
Part Number	
700303202	Nickel plated
700303A56	Black

Switchlocks: A, BY, H, W, Y & YL Series
Fits 3/4 Dia. Bushing



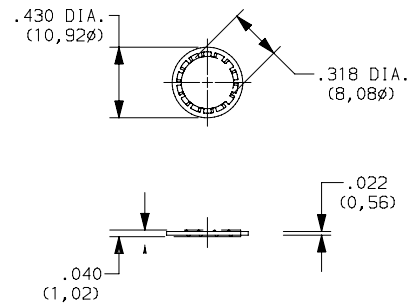
Part Number	
175050200	Zinc plated

Rotary: A & RTA Series
Fits 3/8 Dia. Thread
M10 X .75 metric



Part Number	
472800202	Nickel plated

Pushbutton: 8700 Series
Rotary: F Series
Fits 5/16 Dia. Thread



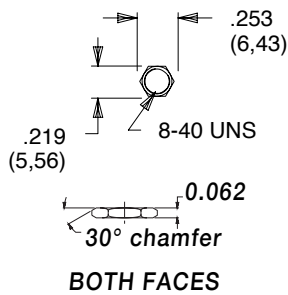
Part Number	
135A00000	Zinc plated

Material

Steel, nickel plated standard. Other finishes available, consult Customer Service Center.

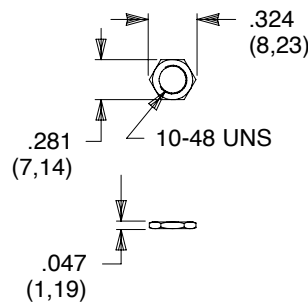
Mounting Nuts

Pushbuttons: 8600 Series



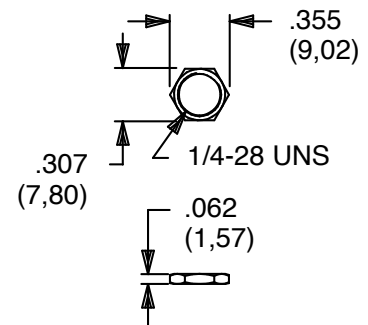
Part Number	
775200201	Nickel plated

Toggles: T Series
Pushbuttons: TP Series



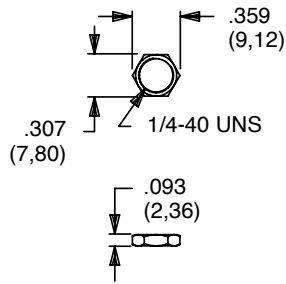
Part Number	
464900201	Nickel plated

Rotary: M Series



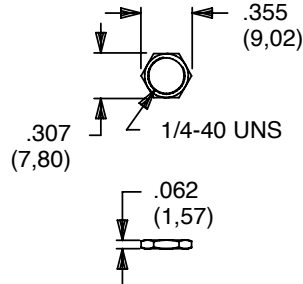
Part Number	
477100201	Nickel plated

Toggles: E Series
Pushbuttons: E010 Series



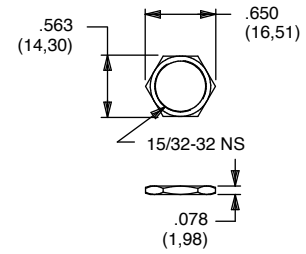
Part Number	
540400A56	Black

Toggles: 7000, 9000 & T Series
Pushbuttons: 8020, 8060, 8500 & TP Series



Part Number	
700201201	Nickel plated

Toggles: 7000 & 9000 Series
Pushbuttons: 8500 Series



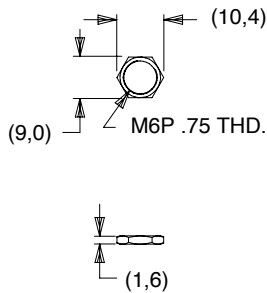
Part Number	
707100201	Nickel plated
707100A56	Black

Material

Brass, nickel plated standard. Other finishes available, consult Customer Service Center.

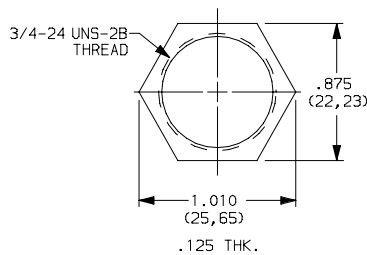
Mounting Nuts

Toggles: 7000 Series
Pushbuttons: 8020 & 8060 Series



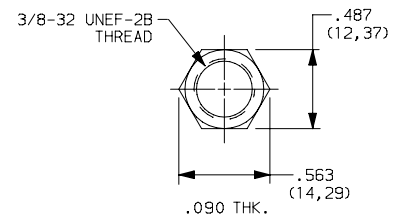
Part Number	
791600201	Nickel plated

Switchlocks:
A, BY, H, P, W, Y & YL Series



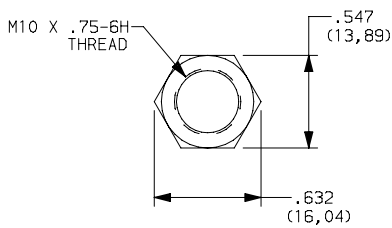
Part Number	
937C00000	Zinc plated

Rotary: A & RTA Series



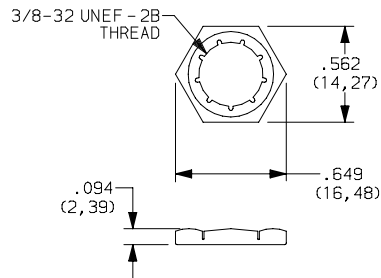
Part Number	
472706201	Nickel plated

Rotary: A & RTA Series



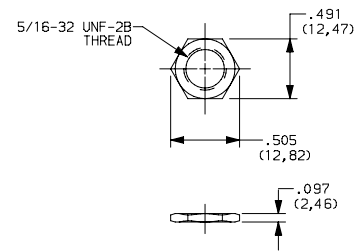
Part Number	
495100201	Nickel plated

Rotary: H & R Series



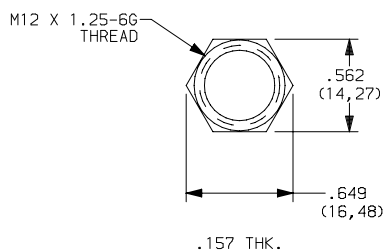
Part Number	
925C00000	Zinc, Yellow trivalent chromium

Rotary: F Series



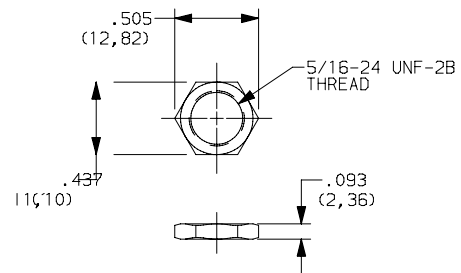
Part Number	
175020201	Nickel plated

Toggles: 7000 Series Pushbuttons: 8020 & 8060 Series



Part Number	
1790901A47	Zinc plated, clear trivalent chromium

Switchlocks: A, BY, H, P, W, Y & YL Series



Part Number	
281B00201	Nickel plated

Material

Brass, nickel plated standard. Other finishes available, consult Customer Service Center.