

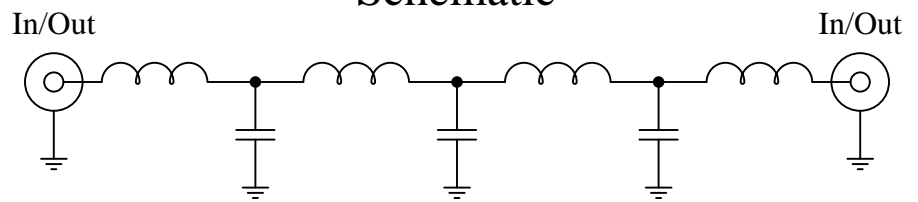
Part Number: CLPFL-0500

Low Pass Range  
DC to 500MHz

**New**  
**Low Pass Filters**



### Schematic



### Features:

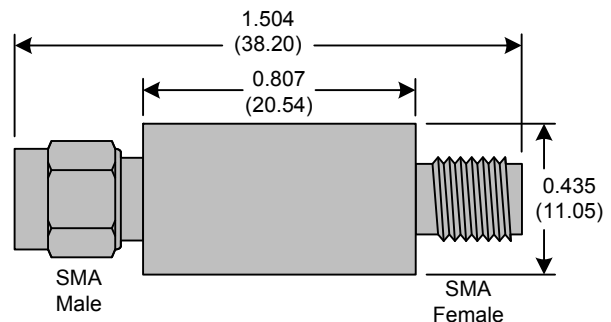
- 7<sup>th</sup> Order Butterworth Response
- 50Ω SMA Connectors

### Applications:

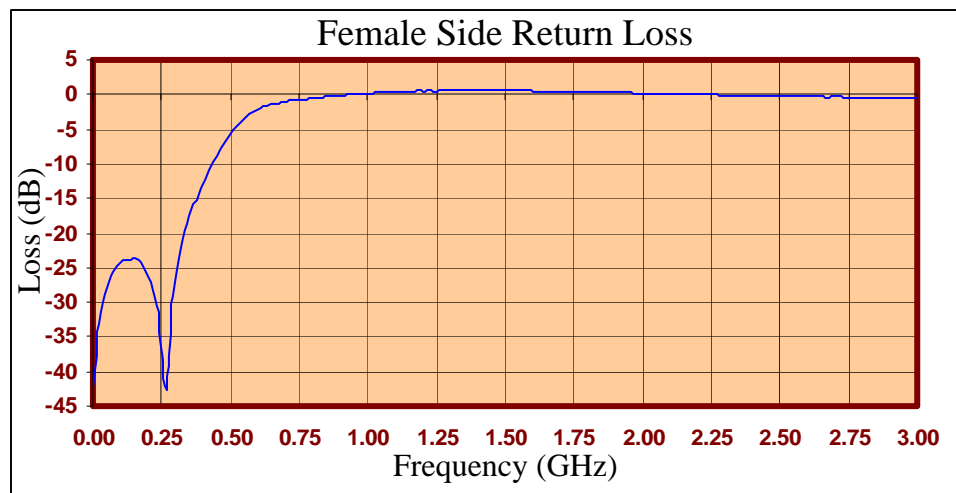
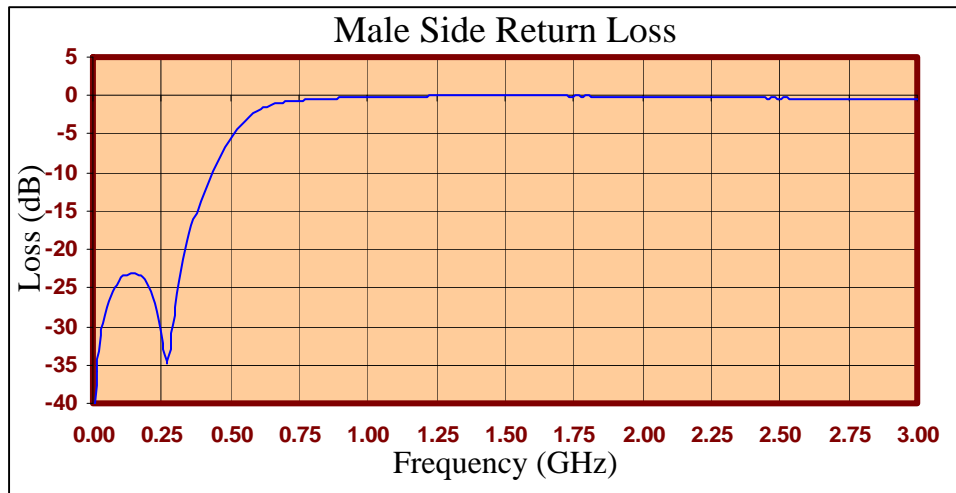
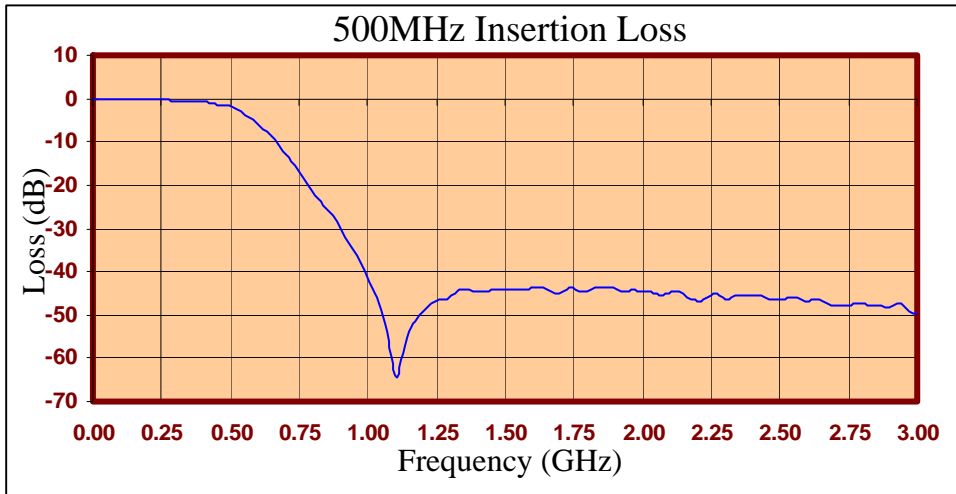
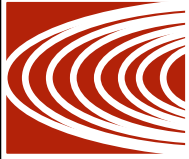
- Test Equipment
- Lab Use

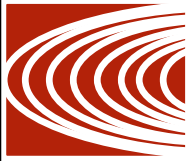
### Maximum Ratings:

- +36dBm (4 Watts)
- Operating Temperature: -40°C to 85°C
- Storage Temperature: -55°C to 100°C



Crystek's new line of Low Pass Filters are designed in a rugged SMA housing. This filter line has excellent out-of-band rejection. Designed for Test Equipment and General Lab Use.





FREQ (MHz)	INSERTION LOSS (dB)	Male Return Loss (dB)	Female Return Loss (dB)
0.3	-0.06	-44.53	-44.82
15.3	-0.06	-35.82	-35.86
30.3	-0.12	-31.25	-31.36
45.3	-0.14	-28.60	-28.69
60.3	-0.16	-26.74	-26.94
75.3	-0.21	-25.42	-25.72
90.3	-0.20	-24.58	-24.73
105	-0.24	-23.74	-24.19
120	-0.24	-23.42	-23.86
135	-0.27	-23.05	-23.76
150	-0.30	-23.17	-23.68
165	-0.29	-23.29	-24.02
180	-0.31	-23.70	-24.72
195	-0.35	-24.48	-25.81
210	-0.30	-24.45	-27.07
225	-0.37	-27.06	-29.31
240	-0.33	-29.25	-32.68
255	-0.37	-27.06	-40.16
270	-0.40	-34.88	-42.38
285	-0.41	-32.00	-31.85
300	-0.44	-27.61	-27.03
330	-0.47	-21.36	-20.74
405	-0.90	-12.34	-12.25
450	-1.59	-8.74	-8.73
510	-2.27	-5.14	-5.17
585	-6.09	-2.36	-2.47
705	-15.09	-0.83	-1.03
810	-24.16	-0.51	-0.51
900	-32.22	-0.33	-0.16
1005	-44.82	-0.23	0.00
1245	-46.09	-0.06	0.00
1500	-44.09	-0.03	0.00
1755	-43.83	-0.07	0.00
1995	-44.15	-0.11	0.00
2250	-45.13	-0.23	-0.05
2505	-46.30	-0.33	-0.25
2745	-47.77	-0.46	-0.37
3000	-49.50	-0.58	-0.51

**Product Control:**

Crystek Part Number:	CLPFL-0500	Release Date:	30-Mar-10
Revision Level:	A	Responsible:	K. Piotrowicz



# Mouser Electronics

Authorized Distributor

Click to View Pricing, Inventory, Delivery & Lifecycle Information:

[Crystek:](#)

[CLPFL-0500](#)