

MICRO SWITCH
a Honeywell Division

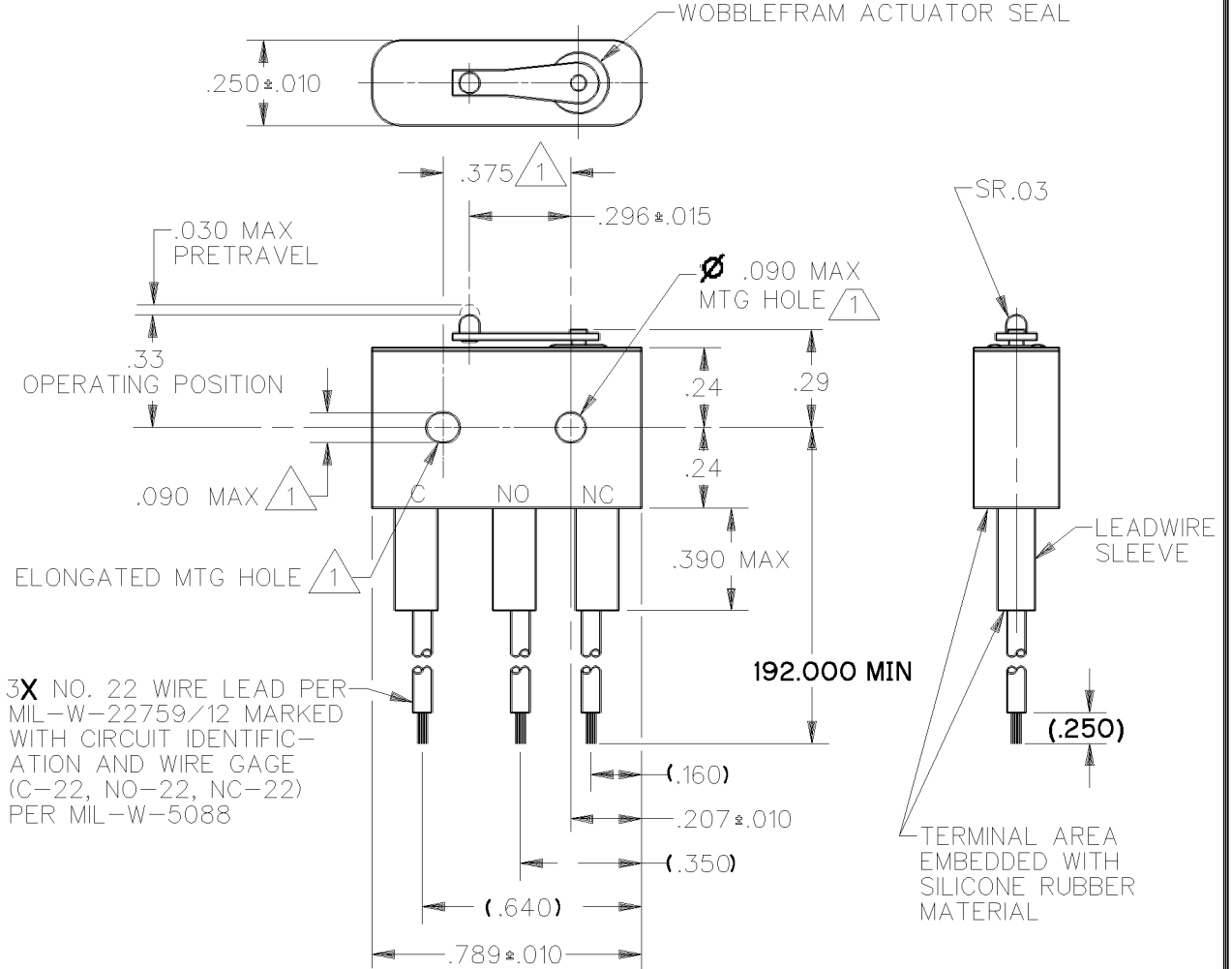
FED. MFG. CODE 91929

SWITCH - BASIC

CATALOG LISTING

6HM1-16

CATALOG LISTING
 6HM1-16
 PAGE 1 OF 1
 ISSUE 2
 REVISIONS
 A PR-23957
 GJW
 5 APR 99
 CHECK
 5APR99
 JAF
 CHECK
 5APR99
 GJW
 DRAWN
 FORMTEK



3X NO. 22 WIRE LEAD PER MIL-W-22759/12 MARKED WITH CIRCUIT IDENTIFICATION AND WIRE GAGE (C-22, NO-22, NC-22) PER MIL-W-5088

- NOTES
- 1 MOUNTING HOLES WILL ACCEPT PINS OR SCREWS OF .087 MAX DIA ON .375 ± .002 CENTERS
 - 2 - FOR USE IN TEMPERATURE RANGE -85°F TO +500°F (DOWN TO -300°F IF WIRE LEADS ARE NOT FLEXED)
 - 3 - HERMETICALLY SEALED (METAL TO METAL, GLASS TO METAL)
 - 4 - ALL EXPOSED PARTS ARE OF CORROSION RESISTANT MATERIALS
 - 5 WEIGHT OF SWITCH ONLY IS 0.014 LB MAX. WEIGHT OF CONDUCTOR GROUP ONLY IS 0.013 LB MAX PER FOOT
 - 6 - DO NOT APPLY MORE THAN 1 1/2 INCH LBS OF TORQUE WHEN TIGHTENING MOUNTING SCREWS

THIS DRAWING COVERS A PROPRIETARY ITEM AND IS THE PROPERTY OF MICRO SWITCH, A DIVISION OF HONEYWELL. THIS DRAWING IS NOT TO BE COPIED OR USED WITHOUT THE APPROVAL OF MICRO SWITCH.



CHARACTERISTICS	ELECTRICAL DATA			SCALE 2:1	DO NOT SCALE PRINT
OPERATING FORCE — — — — 7 OZ MAX	CONTACT ARRANGEMENT S P D T			UNLESS OTHERWISE SPECIFIED TOLERANCES ARE	
RELEASE FORCE — — — — 1 OZ MIN	LINE VOLTAGE	INDUCTIVE LOAD	RESISTIVE LOAD		
DIFFERENTIAL TRAVEL — — — .006 MAX	28 VDC	2 AMP	4 AMP	TWO PLACE (.00) ±.015	
OVERTRAVEL — — — — .003 MIN	115 VAC (400 CYCLE)	2 1/2 AMP	2 1/2 AMP	THREE PLACE (.000) ±.005	
				ANGLES ±	
				WEIGHT 5	

Mouser Electronics

Authorized Distributor

Click to View Pricing, Inventory, Delivery & Lifecycle Information:

[Honeywell:](#)

[6HM1-16](#)