

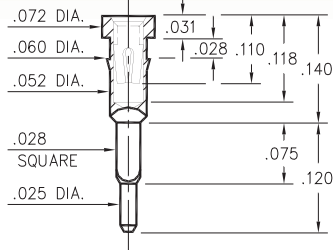
PIN RECEPTACLES

FOR .015" - .025" DIAMETER PINS

7132

7132-0-15-XX-30-XX-04-0

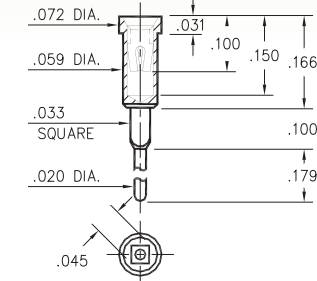
Square press-fit for .032 ± .002 plated through-hole



8445

8445-0-15-XX-30-XX-04-0

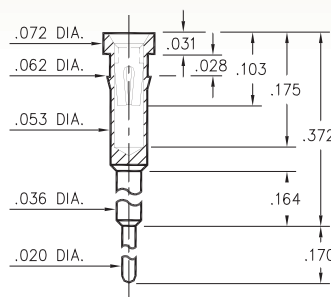
Square press-fit for .039 ± .002 plated through-hole



1038

1038-0-15-XX-30-XX-04-0

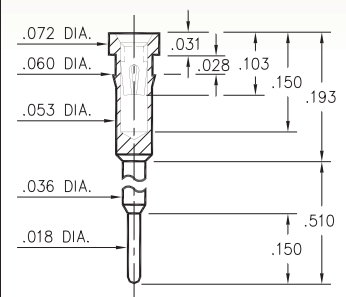
Press-fit in .059 mounting hole



1261

1261-0-15-XX-30-XX-04-0

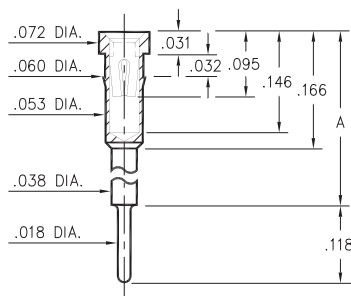
Press-fit in .057 mounting hole



0153

0153-X-15-XX-30-XX-04-0

Press-fit in .057 mounting hole

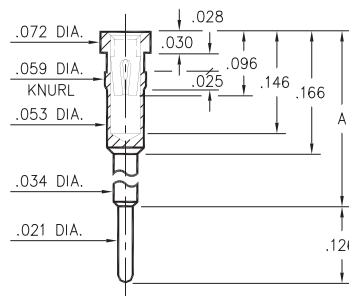


Basic Part Number	Height A
0153-1	.236
0153-2	.315
0153-3	.402
0153-4	.472
0153-5	.594
0153-6	.699

1602/1610

16XX-0-15-XX-30-XX-04-0

Press-fit in .057 mounting hole

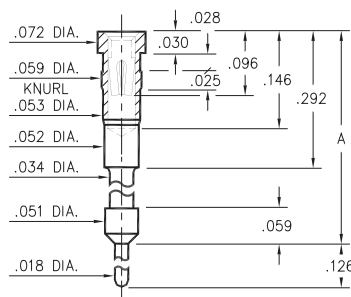


Basic Part Number	Height A
1602-0	.441
1610-0	.642

0903/0904

090X-0-15-XX-30-XX-04-0

Press-fit in .057 mounting hole

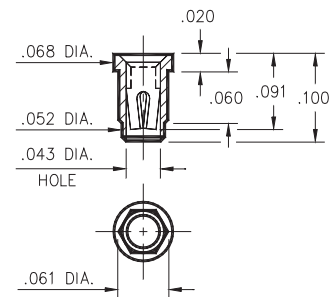


Basic Part Number	Height A
0903-0	.841
0904-0	1.141

8252

8252-0-15-XX-30-XX-10-0

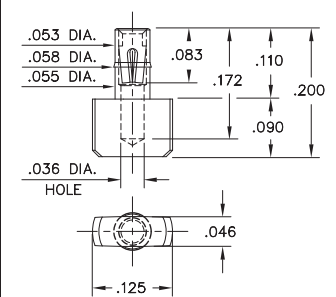
Press-fit in .057 plated through-hole



4078

4078-0-15-XX-30-XX-40-0

Press-fit in .057 mounting hole



SPECIFICATIONS:

Shell Material: Brass Alloy 360, 1/2 Hard

Contact Material: Beryllium Copper Alloy 172, HT

Dimensions: Inches

Tolerances On: Lengths: ± .005
 Diameters: ± .002
 Angles: ± 2°



ORDER CODE: XXXX - X - 15 - XX - 30 - XX - XX - 0

BASIC PART #

SPECIFY SHELL FINISH:

- 01 200 μ" TIN/LEAD OVER NICKEL
- ◆ 80 200 μ" TIN OVER NICKEL (RoHS)
- ◆ 15 10 μ" GOLD OVER NICKEL (RoHS)

SPECIFY CONTACT FINISH:

- 02 100 μ" TIN/LEAD OVER NICKEL
- ◆ 84 100 μ" TIN OVER NICKEL (RoHS)
- ◆ 27 30 μ" GOLD OVER NICKEL (RoHS)

SELECT CONTACT:

#30 CONTACT (DATA ON PAGE 253)

(For alternate contact choices, see groups B and C on page 248)



Mouser Electronics

Authorized Distributor

Click to View Pricing, Inventory, Delivery & Lifecycle Information:

Mill-Max:

[1610-0-15-01-30-02-04-0](#) [1610-0-15-01-30-27-04-0](#) [1602-0-15-01-30-02-04-0](#) [1602-0-15-01-30-27-04-0](#) [1261-0-15-01-30-02-04-0](#) [1261-0-15-01-30-27-04-0](#) [1038-0-15-01-30-02-04-0](#) [1038-0-15-01-30-27-04-0](#) [0904-0-15-01-30-02-04-0](#) [0904-0-15-01-30-27-04-0](#) [0903-0-15-01-30-02-04-0](#) [0903-0-15-01-30-27-04-0](#) [0153-6-15-01-30-02-04-0](#) [0153-6-15-01-30-27-04-0](#) [0153-5-15-01-30-02-04-0](#) [0153-5-15-01-30-27-04-0](#) [0153-4-15-01-30-02-04-0](#) [0153-4-15-01-30-27-04-0](#) [0153-3-15-01-30-02-04-0](#) [0153-3-15-01-30-27-04-0](#) [0153-2-15-01-30-02-04-0](#) [0153-2-15-01-30-27-04-0](#) [0153-1-15-01-30-02-04-0](#) [0153-1-15-01-30-27-04-0](#) [0153-1-15-15-30-27-04-0](#) [0153-2-15-15-30-27-04-0](#) [0153-3-15-15-30-27-04-0](#) [0153-4-15-15-30-27-04-0](#) [0153-5-15-15-30-27-04-0](#) [0153-6-15-15-30-27-04-0](#) [0903-0-15-15-30-27-04-0](#) [0904-0-15-15-30-27-04-0](#) [1038-0-15-15-30-27-04-0](#) [1261-0-15-15-30-27-04-0](#) [1602-0-15-15-30-27-04-0](#) [1610-0-15-15-30-27-04-0](#) [0153-6-15-00-00-00-04-0](#) [0153-5-15-00-00-00-04-0](#) [1602-0-15-00-00-00-04-0](#) [1261-0-15-00-00-00-04-0](#) [0153-3-15-00-00-00-04-0](#) [7132-0-15-00-00-00-04-0](#) [0153-4-15-00-00-00-04-0](#) [8445-0-15-00-00-00-04-0](#) [0153-1-15-00-00-00-04-0](#) [0903-0-15-00-00-00-04-0](#) [0904-0-15-00-00-00-04-0](#) [8252-0-15-00-00-00-10-0](#) [0153-2-15-00-00-00-04-0](#) [0153-4-15-80-30-14-04-0](#) [0153-2-15-01-30-14-04-0](#) [1602-0-15-80-30-14-04-0](#) [0153-1-15-80-30-14-04-0](#) [0153-3-15-01-30-14-04-0](#) [1610-0-15-80-30-14-04-0](#) [1261-0-15-80-30-14-04-0](#) [0153-3-15-80-30-14-04-0](#) [0153-4-15-01-30-14-04-0](#) [0153-6-15-80-30-14-04-0](#) [0153-1-15-01-30-14-04-0](#) [0903-0-15-80-30-14-04-0](#) [0153-5-15-01-30-14-04-0](#) [0153-6-15-01-30-14-04-0](#) [0153-2-15-80-30-14-04-0](#) [0153-5-15-80-30-14-04-0](#) [0904-0-15-80-30-14-04-0](#) [1602-0-15-01-30-14-04-0](#) [0903-0-15-01-30-14-04-0](#) [1610-0-15-01-30-14-04-0](#) [0904-0-15-01-30-14-04-0](#) [1261-0-15-01-30-14-04-0](#) [1038-0-15-01-30-14-04-0](#) [1038-0-15-80-30-14-04-0](#) [8252-0-15-01-30-14-10-0](#) [8445-0-15-01-30-14-04-0](#) [7132-0-15-80-30-14-04-0](#) [7132-0-15-01-30-14-04-0](#) [8252-0-15-80-30-14-10-0](#) [8445-0-15-80-30-14-04-0](#)