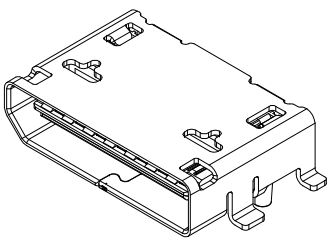
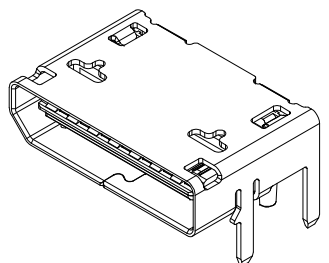


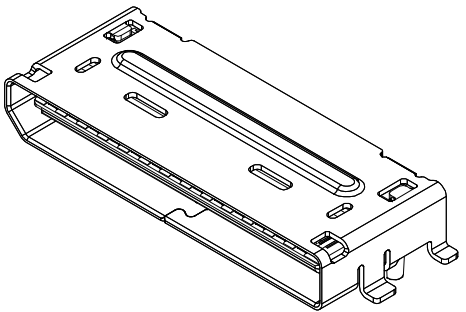
STATUS	MATERIAL NUMBER	CIRCUIT SIZE	SHELL ATTACH OPTION	DM *T*
TOOLED	173162-0131	80	SMT	-
TOOLED	173162-0132	80	TH	3.0
NOT TOOLED	173162-0121	42	SMT	-
NOT TOOLED	173162-0122	42	TH	3.0
NOT TOOLED	173162-****	80	TH	2.36
NOT TOOLED	173162-****	80	TH	1.57
NOT TOOLED	173162-****	42	TH	2.36
NOT TOOLED	173162-****	42	TH	1.57



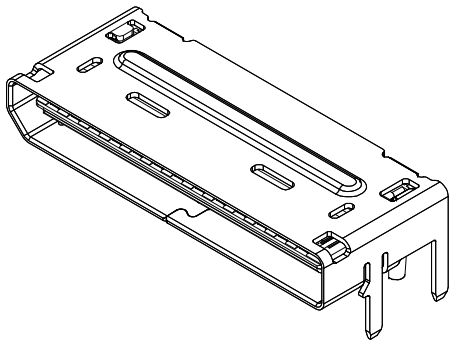
42 CIRCUIT SMT



42 CIRCUIT TAIL



80 CIRCUIT SMT



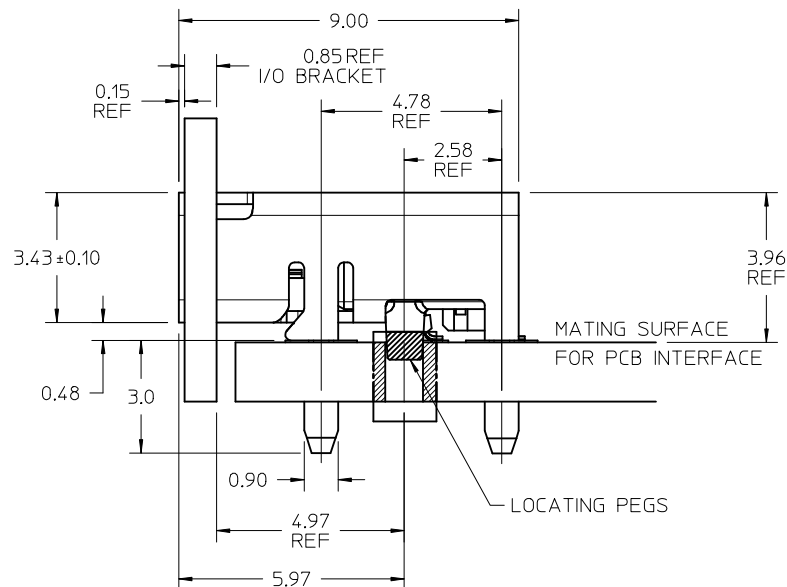
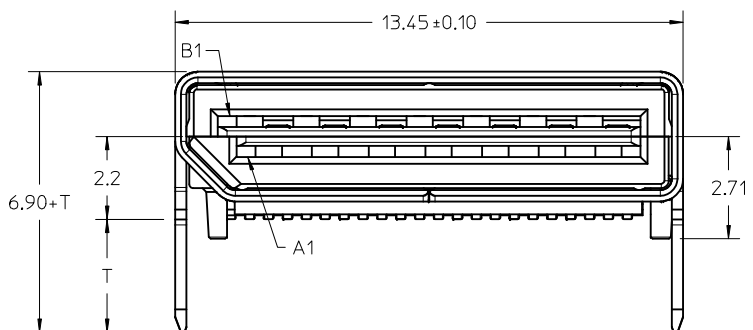
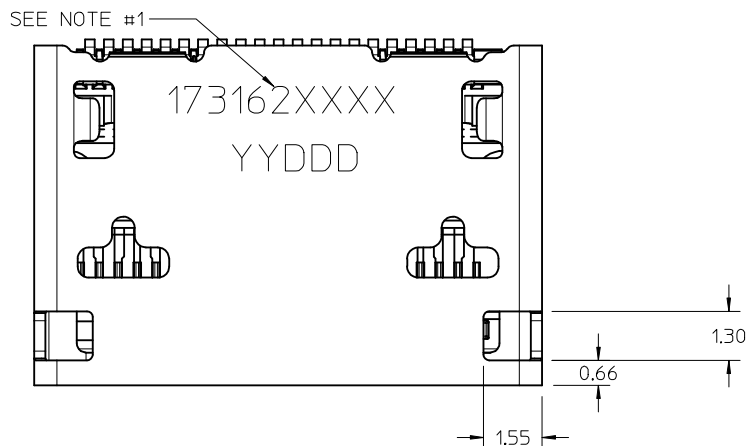
80 CIRCUIT TAIL

- NOTES:
- MATERIALS:
HOUSING - GLASS FILLED THERMOPLASTIC, 94V-0
CONTACTS - HIGH PERFORMANCE COPPER ALLOY
SHIELD - STAINLESS STEEL
 - FINISH:
CONTACTS - 0.76µm MIN. GOLD MATING SIDE
2.54µm TIN ON SOLDER TAILS
2.0µm MIN. NICKEL UNDERPLATE OVERALL

SHIELD - MATTE TIN OVER 1.27µm MIN. NICKEL
 - PRODUCT SPECIFICATION: PS-173162-0001
 - PACKAGING SPECIFICATION: PK-173307-0001
 - MATES WITH: MOLEX CABLE SERIES 200226 OR 200227
PER INDUSTRY STANDARD PCIe OCuLink 1.0, SFF-8611
 - APPLICATION SPECIFICATION: AS-173162-0001
 - COSMETIC SPECIFICATION: PS-45499-002
 - ASSEMBLY PART NUMBER AND DATE CODE TO BE LOCATED APPROXIMATELY AS SHOWN, DATE CODE TO SHOW THE DAT AND YEAR OF ASEMBLY (ODDY OR YDDD)

UPDATE TABLE EIC NO: UCP2017-1264 CHYD: DRWNSVANG01 APPR: MCCELLELL 2016/12/06 2017/04/24	QUALITY SYMBOLS ▽=0 ▽=0 ▽=0	GENERAL TOLERANCES (UNLESS SPECIFIED) mm INCH 4 PLACES ±.005 ±.005 3 PLACES ±.010 ±.010 2 PLACES ±0.13 ±.010 1 PLACE ±0.25 ±.010 0 PLACE ±.010 ±.010 ANGULAR ±1/2° DRAFT WHERE APPLICABLE MUST REMAIN WITHIN DIMENSIONS	DIMENSION STYLE MM ONLY SCALE 10:1 DESIGN UNITS METRIC THIRD ANGLE PROJECTION	DRAWN BY B JANOWIAK DATE 2015/05/11 CHECKED BY DATE APPROVED BY MBANKIS DATE 2015/09/18	TITLE NANO PITCH I/O FIXED RIGHT ANGLE 4X AND 8X molex	MATERIAL NO. SEE CHART	DOCUMENT NO. SD-173162-0001	SHEET NO. 1 OF 10
	THIS DRAWING CONTAINS INFORMATION THAT IS PROPRIETARY TO MOLEX INCORPORATED AND SHOULD NOT BE USED WITHOUT WRITTEN PERMISSION							
	SIZE D							
	SIZE D							

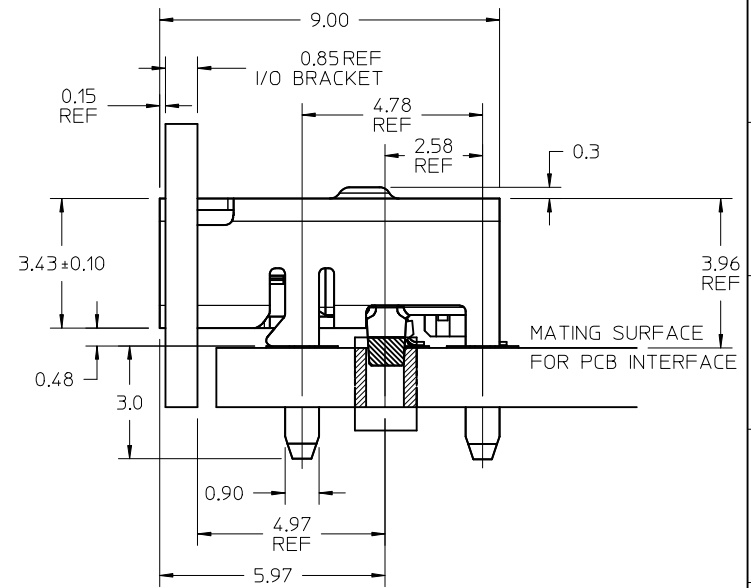
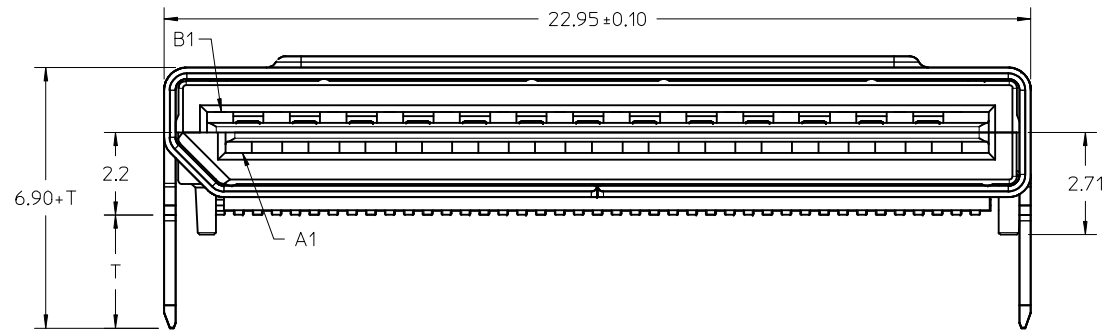
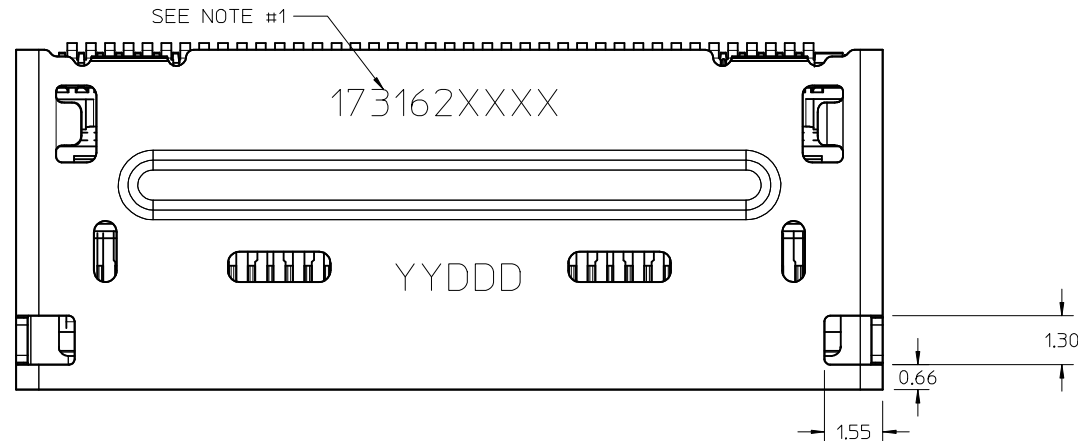
42 CIRCUIT TH ASSEMBLY



- NOTES:
1. MANUFACTURED DATE CODE (JULIAN CALENDAR) AND PART NUMBER
 2. SOLDER TAIL COPLANARITY, 0.10 MAX

SEE SHEET 1 EC NO: UCP2017-1264 DRWNS:VANG01 2016/12/06 CHKD: APPR:TMCCLELL 2017/04/24	QUALITY SYMBOLS	GENERAL TOLERANCES (UNLESS SPECIFIED)	DIMENSION STYLE MM ONLY	SCALE 10:1	DESIGN UNITS METRIC	THIRD ANGLE PROJECTION
	▽=0	mm INCH	DRAWN BY DATE BJANOWIAK 2015/05/11	TITLE NANO PITCH I/O FIXED RIGHT ANGLE 4X AND 8X		
	▽=0	4 PLACES ± --- ± ---	CHECKED BY DATE	MATERIAL NO.		
	▽=0	3 PLACES ± --- ± ---	APPROVED BY DATE MBANAKIS 2015/09/18	DOCUMENT NO. SD-173162-0001		
		ANGULAR ±1/2°	SEE SHEET 1		SHEET NO. 2 OF 10	
		DRAFT WHERE APPLICABLE MUST REMAIN WITHIN DIMENSIONS	THIS DRAWING CONTAINS INFORMATION THAT IS PROPRIETARY TO MOLEX INCORPORATED AND SHOULD NOT BE USED WITHOUT WRITTEN PERMISSION			

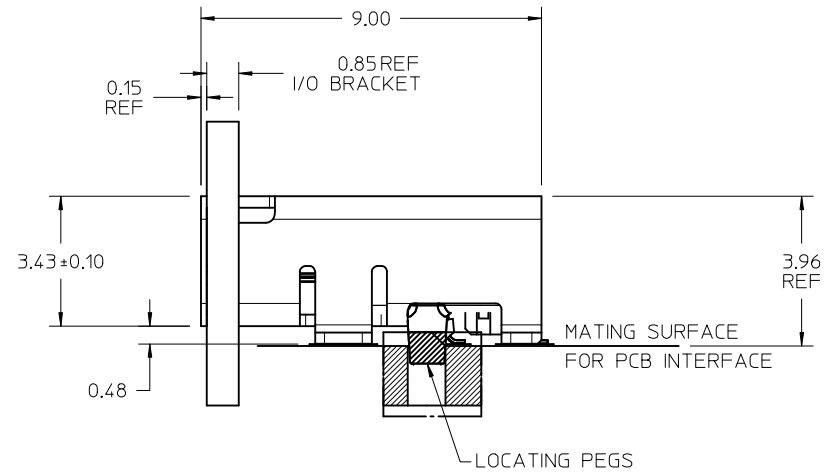
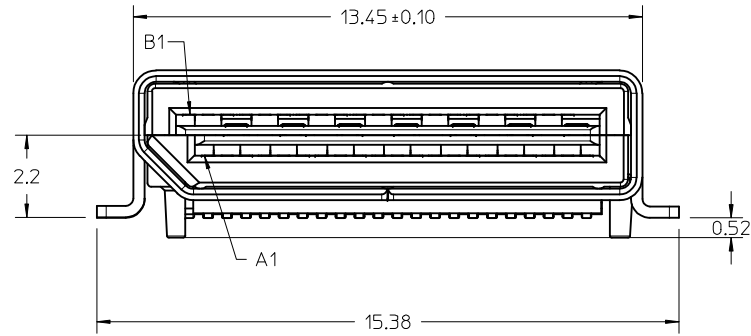
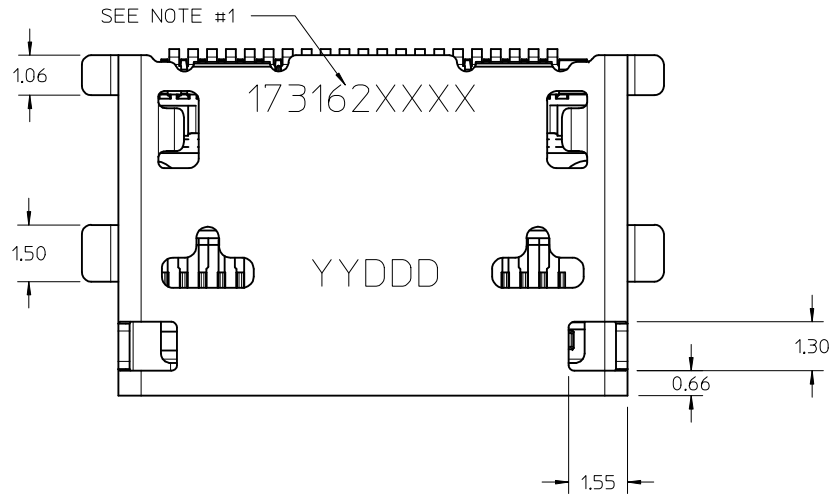
80 CIRCUIT TH ASSEMBLY



- NOTES:
1. MANUFACTURED DATE CODE (JULIAN CALENDAR) AND PART NUMBER
 2. SOLDER TAIL COPLANARITY, 0.10 MAX

SEE SHEET 1 EC NO: UCP2017-1264 DRWNS:VANG01 2016/12/06 CHKD: APPR:TMCCLELL 2017/04/24 REV	QUALITY SYMBOLS	GENERAL TOLERANCES (UNLESS SPECIFIED)	DIMENSION STYLE MM ONLY	SCALE 10:1	DESIGN UNITS METRIC	THIRD ANGLE PROJECTION
	▽=0	mm	INCH	DRAWN BY BJANOWIAK	DATE 2015/05/11	NANO PITCH I/O FIXED RIGHT ANGLE 4X AND 8X molex
	▽=0	4 PLACES ± ---	± ---	CHECKED BY	DATE	
	▽=0	2 PLACES ± 0.13	± ---	APPROVED BY MBANAKIS	DATE 2015/09/18	DOCUMENT NO. SD-173162-0001
▽=0	1 PLACE ± 0.25	± ---	MATERIAL NO.	SIZE	SHEET NO. 3 OF 10	
		ANGULAR ±1/2°	SEE SHEET 1		THIS DRAWING CONTAINS INFORMATION THAT IS PROPRIETARY TO MOLEX INCORPORATED AND SHOULD NOT BE USED WITHOUT WRITTEN PERMISSION	
DRAFT WHERE APPLICABLE MUST REMAIN WITHIN DIMENSIONS						

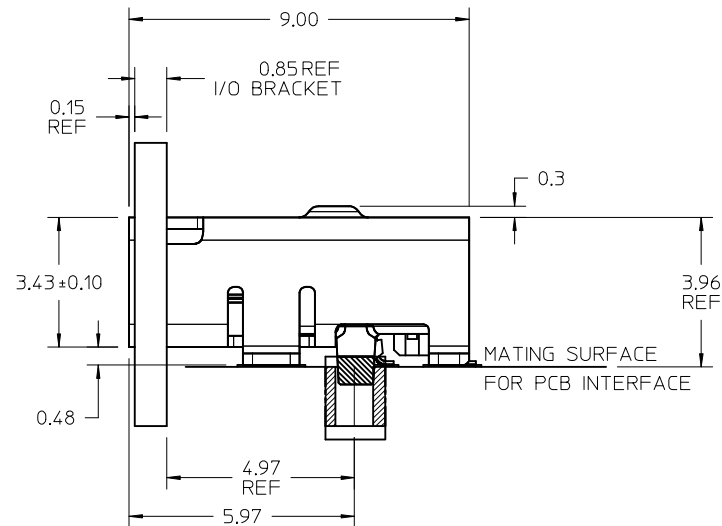
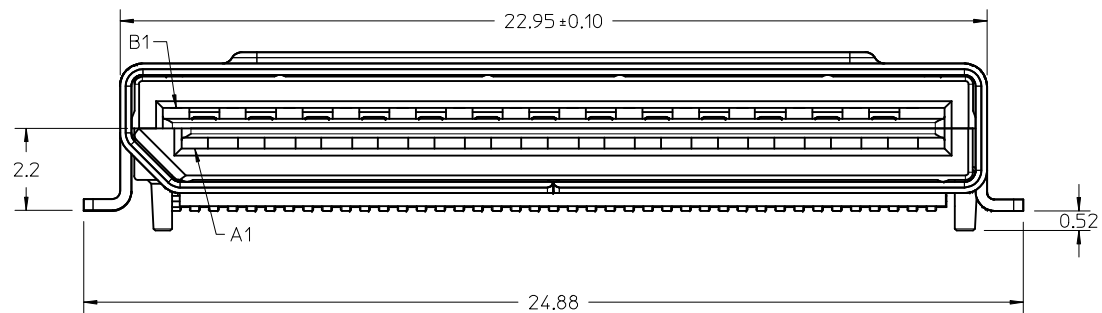
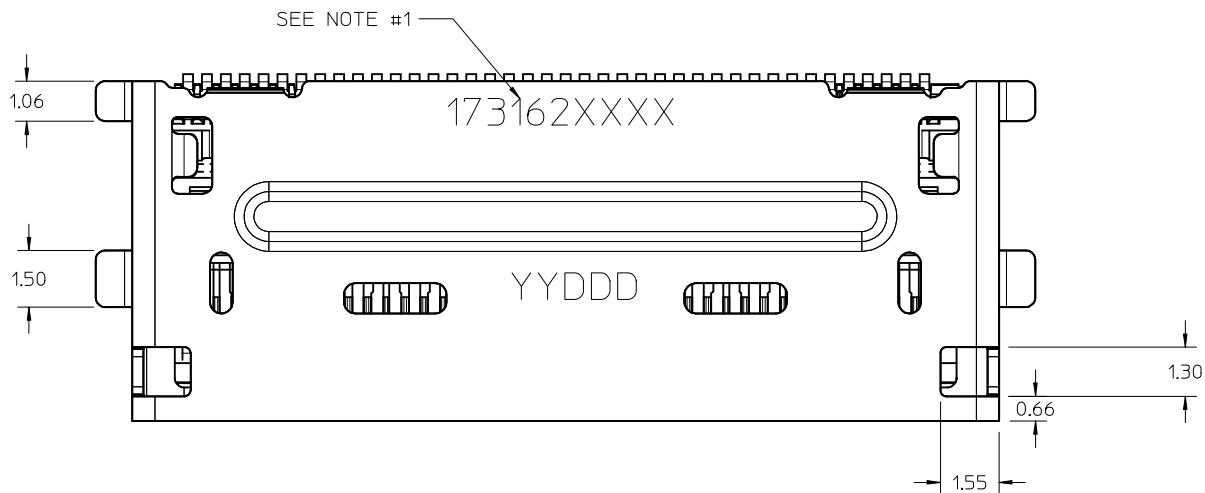
42 CIRCUIT SMT ASSEMBLY



- NOTES:
1. MANUFACTURED DATE CODE (JULIAN CALENDAR) AND PART NUMBER
 2. SOLDER TAIL COPLANARITY, 0.10 MAX

SEE SHEET 1 EC NO: UCP2017-1264 DRWNSVANG01 2016/12/06 CHKD: APPR: TMCLELL 2017/04/24	QUALITY SYMBOLS	GENERAL TOLERANCES (UNLESS SPECIFIED)	DIMENSION STYLE MM ONLY	SCALE 4:1	DESIGN UNITS METRIC	THIRD ANGLE PROJECTION
	▽=0	mm INCH	DRAWN BY DATE BJANOWIAK 2015/05/11	TITLE NANO PITCH I/O FIXED RIGHT ANGLE 4X AND 8X	molex DOCUMENT NO. SD-173162-0001 SHEET NO. 4 OF 10	
	▽=0	4 PLACES ± --- ± --- 3 PLACES ± --- ± --- 2 PLACES ± 0.13 ± --- 1 PLACE ± 0.25 ± --- 0 PLACE ± --- ± ---	CHECKED BY DATE			
	▽=0	ANGULAR ±1/2°	APPROVED BY DATE MBANAKIS 2015/09/18	SEE SHEET 1		
REV	DESCRIPTION	DRAFT WHERE APPLICABLE MUST REMAIN WITHIN DIMENSIONS	MATERIAL NO.	THIS DRAWING CONTAINS INFORMATION THAT IS PROPRIETARY TO MOLEX INCORPORATED AND SHOULD NOT BE USED WITHOUT WRITTEN PERMISSION		

80 CIRCUIT SMT ASSEMBLY

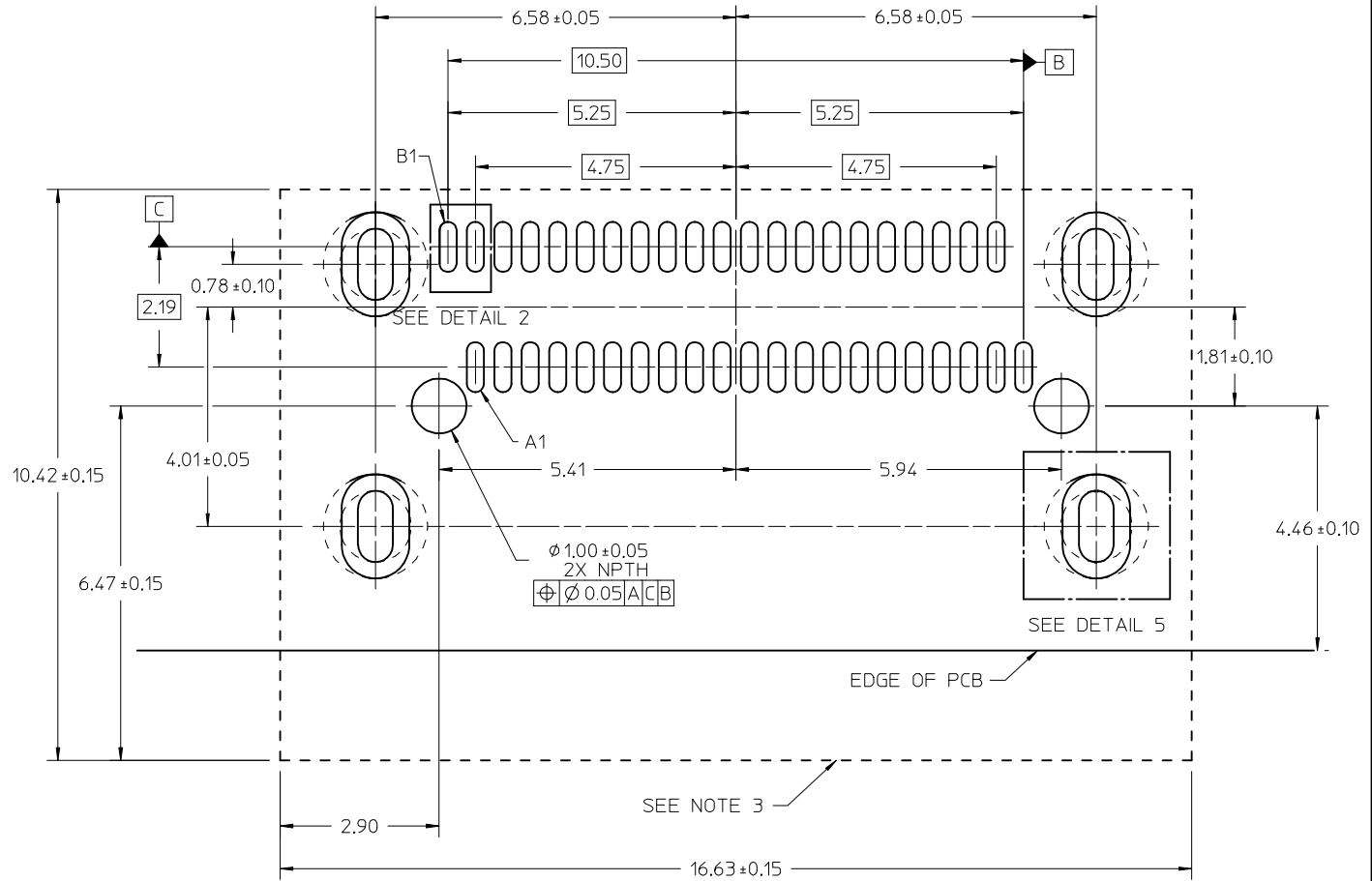
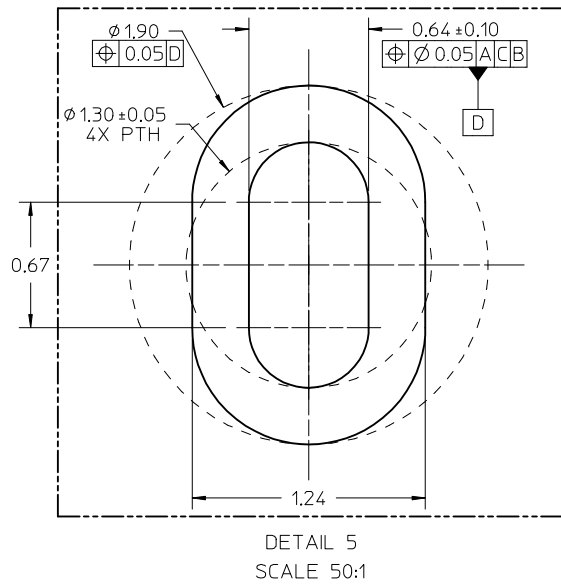
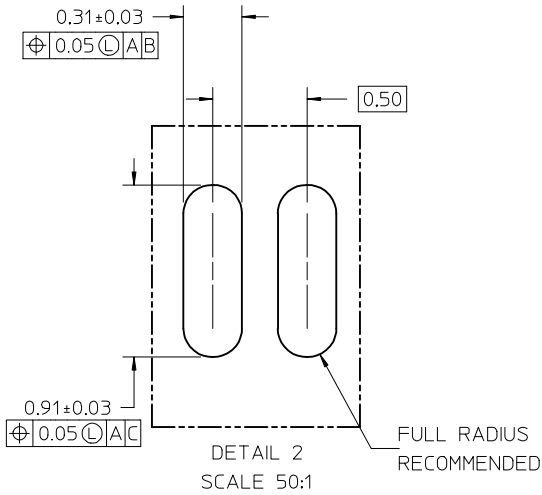


NOTES:

1. MANUFACTURED DATE CODE (JULIAN CALENDAR) AND PART NUMBER
2. SOLDER TAIL COPLANARITY, 0.10 MAX

SEE SHEET 1 EC NO: UCP2017-1264 DRWNSVANG01 2016/12/06 CHKD: APPR: TMCLELL 2017/04/24	QUALITY SYMBOLS ▽=0 ▽=0 ▽=0	GENERAL TOLERANCES (UNLESS SPECIFIED)	DIMENSION STYLE MM ONLY	SCALE 10:1	DESIGN UNITS METRIC	THIRD ANGLE PROJECTION																			
			<table border="1" style="width: 100%; border-collapse: collapse;"> <thead> <tr> <th></th> <th>mm</th> <th>INCH</th> </tr> </thead> <tbody> <tr> <td>4 PLACES</td> <td>± ---</td> <td>± ---</td> </tr> <tr> <td>3 PLACES</td> <td>± ---</td> <td>± ---</td> </tr> <tr> <td>2 PLACES</td> <td>± 0.13</td> <td>± ---</td> </tr> <tr> <td>1 PLACE</td> <td>± 0.25</td> <td>± ---</td> </tr> <tr> <td>0 PLACE</td> <td>± ---</td> <td>± ---</td> </tr> </tbody> </table>		mm	INCH	4 PLACES	± ---	± ---	3 PLACES	± ---	± ---	2 PLACES	± 0.13	± ---	1 PLACE	± 0.25	± ---	0 PLACE	± ---	± ---	DRAWN BY DATE B JANOWIAK 2015/05/11 CHECKED BY DATE	TITLE NANO PITCH I/O FIXED RIGHT ANGLE 4X AND 8X		
		mm	INCH																						
	4 PLACES	± ---	± ---																						
3 PLACES	± ---	± ---																							
2 PLACES	± 0.13	± ---																							
1 PLACE	± 0.25	± ---																							
0 PLACE	± ---	± ---																							
		ANGULAR ±1/2° DRAFT WHERE APPLICABLE MUST REMAIN WITHIN DIMENSIONS	APPROVED BY DATE MBANAK I S 2015/09/18 MATERIAL NO.	DOCUMENT NO. SD-173162-0001																					
			SEE SHEET 1	SHEET NO. 5 OF 10																					

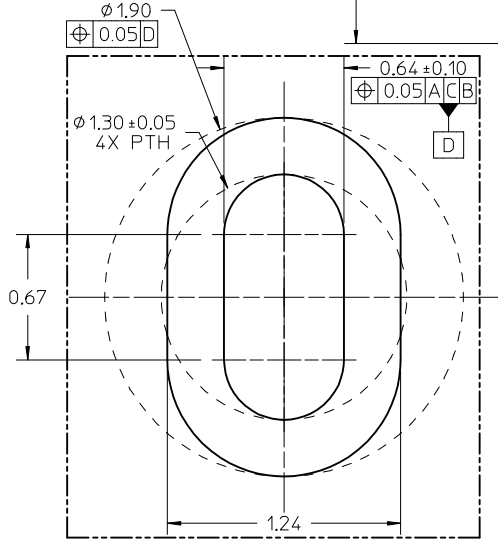
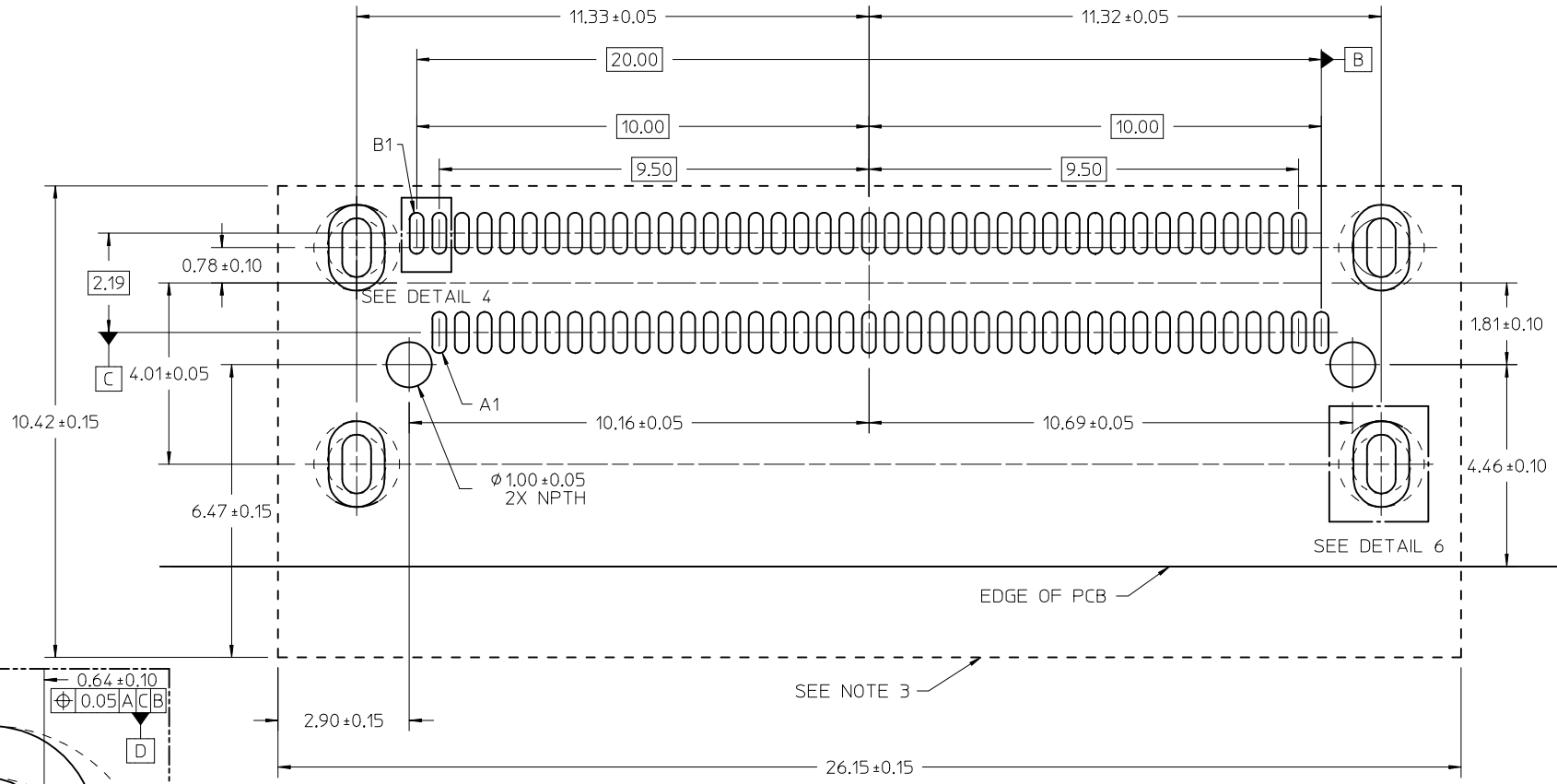
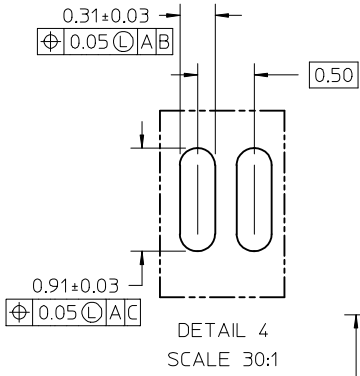
42 CIRCUIT TAIL RECOMMENDED FOOTPRINT



- NOTES:
1. MINIMUM RECOMMENDED SPACING BETWEEN ADJACENT CONNECTOR IS 19.05mm
 2. MINIMUM RECOMMENDED PCB THICKNESS: 1.57mm
 3. CONNECTOR KEEP OUT AREA
 4. DATUM -A- ESTABLISHED FROM TOP SURFACE OF PCB

SEE SHEET 1 EC NO: UCP2017-1264 DRWNSYANG01 2016/12/06 CHKD: TMCLELL APPR: TMCLELL 2017/04/24	QUALITY SYMBOLS	GENERAL TOLERANCES (UNLESS SPECIFIED)	DIMENSION STYLE MM ONLY	SCALE 4:1	DESIGN UNITS METRIC	THIRD ANGLE PROJECTION
	$\nabla = 0$	mm INCH	DRAWN BY DATE BJANOWIAK 2015/05/11	TITLE NANO PITCH I/O FIXED RIGHT ANGLE 4X AND 8X	molex DOCUMENT NO. SD-173162-0001 SHEET NO. 6 OF 10	THIS DRAWING CONTAINS INFORMATION THAT IS PROPRIETARY TO MOLEX INCORPORATED AND SHOULD NOT BE USED WITHOUT WRITTEN PERMISSION
	$\nabla = 0$	4 PLACES ± --- ± ---	CHECKED BY DATE	APPROVED BY DATE MBANAK I S 2015/09/18		
	$\nabla = 0$	3 PLACES ± --- ± ---	MATERIAL NO.	SIZE		
$\nabla = 0$	2 PLACES ± 0.13 ± ---	SEE SHEET 1				
	1 PLACE ± 0.25 ± ---	DRAFT WHERE APPLICABLE MUST REMAIN WITHIN DIMENSIONS				
	0 PLACE ± --- ± ---					

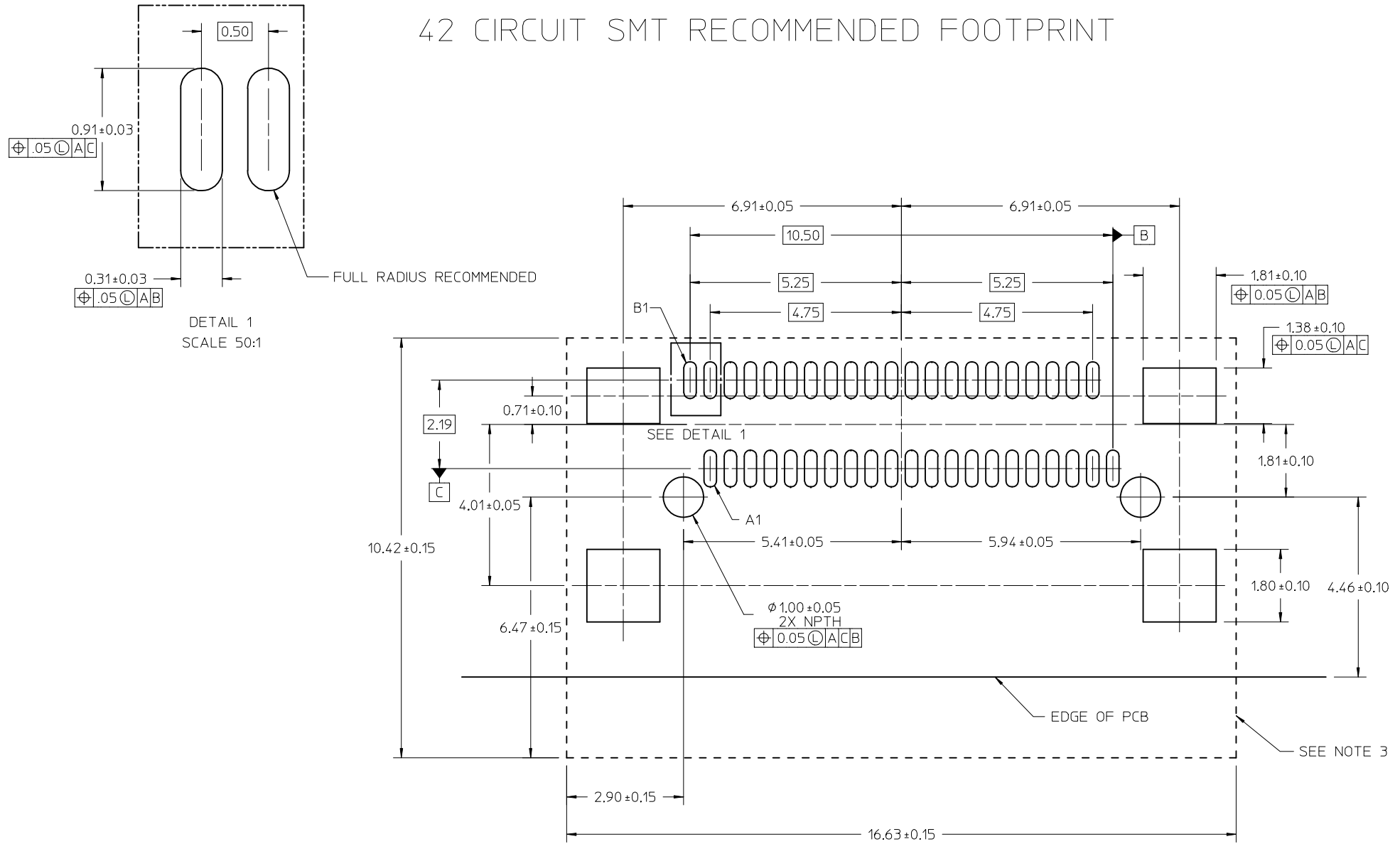
80 CIRCUIT TAIL RECOMMENDED FOOTPRINT



- NOTES:
1. MINIMUM RECOMMENDED SPACING BETWEEN ADJACENT CONNECTOR IS 28.50mm
 2. MINIMUM RECOMMENDED PCB THICKNESS: 1.57mm
 3. CONNECTOR KEEP OUT AREA
 4. DATUM -A- ESTABLISHED FROM TOP SURFACE OF PCB

SEE SHEET 1 EC NO: UCP2017-1264 DRWNS:VANG01 2016/12/06 CHKD: TMCLELL 2017/04/24 APPR: TMCLELL	QUALITY SYMBOLS	GENERAL TOLERANCES (UNLESS SPECIFIED)	DIMENSION STYLE	SCALE	DESIGN UNITS	THIRD ANGLE PROJECTION
	▽=0	mm INCH	MM ONLY	13:1	METRIC	
	▽=0	4 PLACES ± --- ± ---	DRAWN BY DATE	TITLE NANO PITCH I/O FIXED RIGHT ANGLE 4X AND 8X molex		
	▽=0	3 PLACES ± --- ± ---	BJANOWIAK 2015/05/11			
	2 PLACES ±0.13 ± ---	CHECKED BY DATE	APPROVED BY DATE MBANAK I S 2015/09/18			
	1 PLACE ±0.25 ± ---		MATERIAL NO. DOCUMENT NO. SEE SHEET 1 SD-173162-0001			
	0 PLACE ± --- ± ---		SHEET NO. 7 OF 10			
	ANGULAR ±1/2°	DRAFT WHERE APPLICABLE MUST REMAIN WITHIN DIMENSIONS				
		THIS DRAWING CONTAINS INFORMATION THAT IS PROPRIETARY TO MOLEX INCORPORATED AND SHOULD NOT BE USED WITHOUT WRITTEN PERMISSION				

42 CIRCUIT SMT RECOMMENDED FOOTPRINT

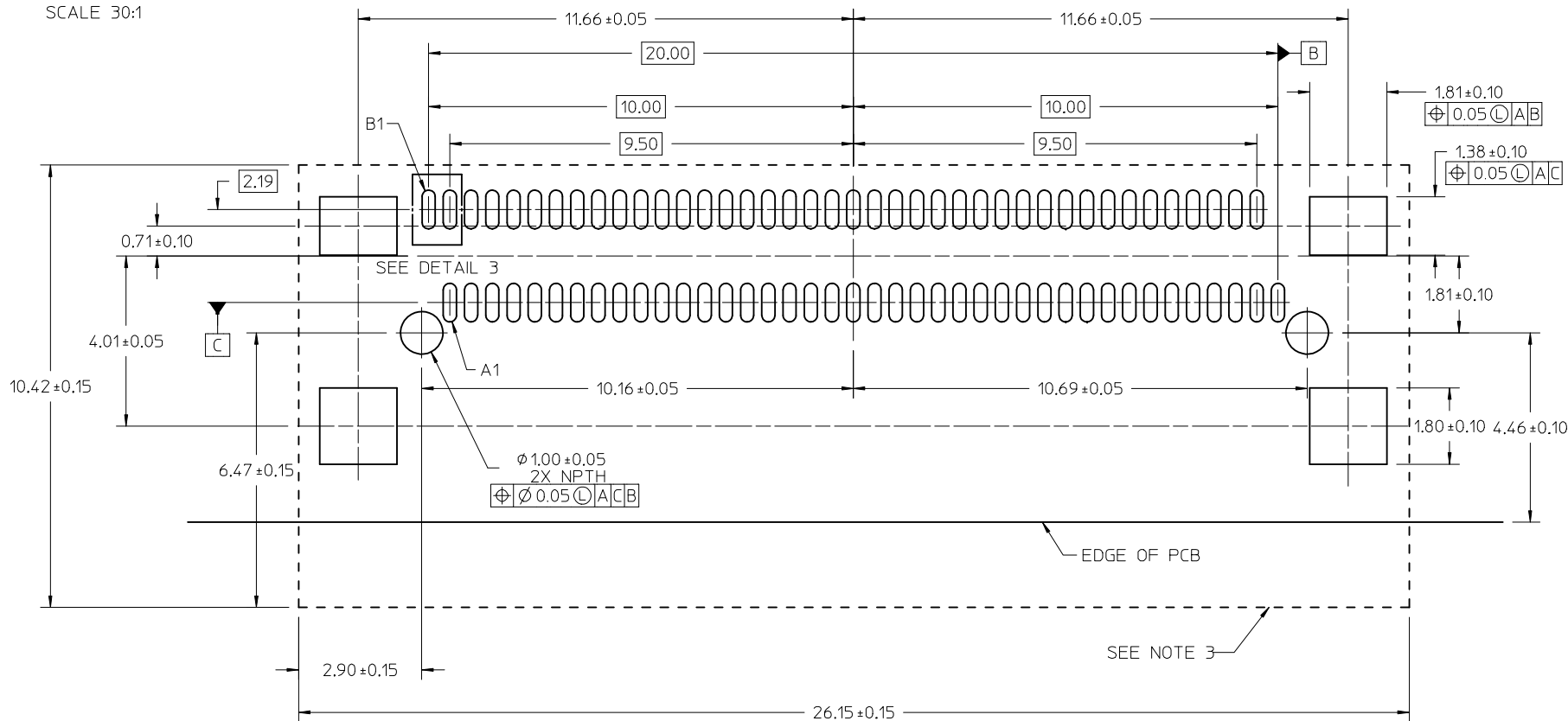
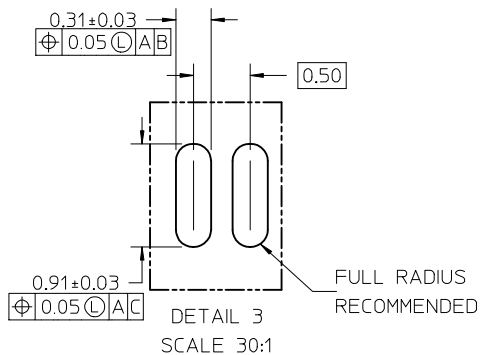


NOTES:

1. MINIMUM RECOMMENDED SPACING BETWEEN ADJACENT CONNECTOR IS 19.05mm
2. MINIMUM RECOMMENDED PCB THICKNESS: 1.57mm
3. CONNECTOR KEEP OUT AREA
4. DATUM -A- ESTABLISHED FROM TOP SURFACE OF PCB

SEE SHEET 1 EC NO: UCP2017-1264 DRWNS:VANG01 2016/12/06 CHKD: APPR:MCLELL 2017/04/24	QUALITY SYMBOLS	GENERAL TOLERANCES (UNLESS SPECIFIED)		DIMENSION STYLE	SCALE	DESIGN UNITS	THIRD ANGLE PROJECTION	
	▽=0	mm	INCH	MM ONLY	20:1	METRIC	NANO PITCH I/O FIXED RIGHT ANGLE 4X AND 8X	
	▽=0	4 PLACES ± ---	± ---	DRAWN BY	DATE	mox DOCUMENT NO. SD-173162-0001 SHEET NO. 8 OF 10		
	▽=0	3 PLACES ± ---	± ---	BJANOWIAK	2015/05/11			
	2 PLACES ± 0.13	± ---	CHECKED BY	DATE				
	1 PLACE ± 0.25	± ---	APPROVED BY	DATE				
	0 PLACE ± ---	± ---	MBANAKIS	2015/09/18				
		ANGULAR ±1/2°	DRAFT WHERE APPLICABLE MUST REMAIN WITHIN DIMENSIONS		MATERIAL NO.		SIZE	
					SEE SHEET 1			
					THIS DRAWING CONTAINS INFORMATION THAT IS PROPRIETARY TO MOLEX INCORPORATED AND SHOULD NOT BE USED WITHOUT WRITTEN PERMISSION			

80 CIRCUIT SMT RECOMMENDED FOOTPRINT

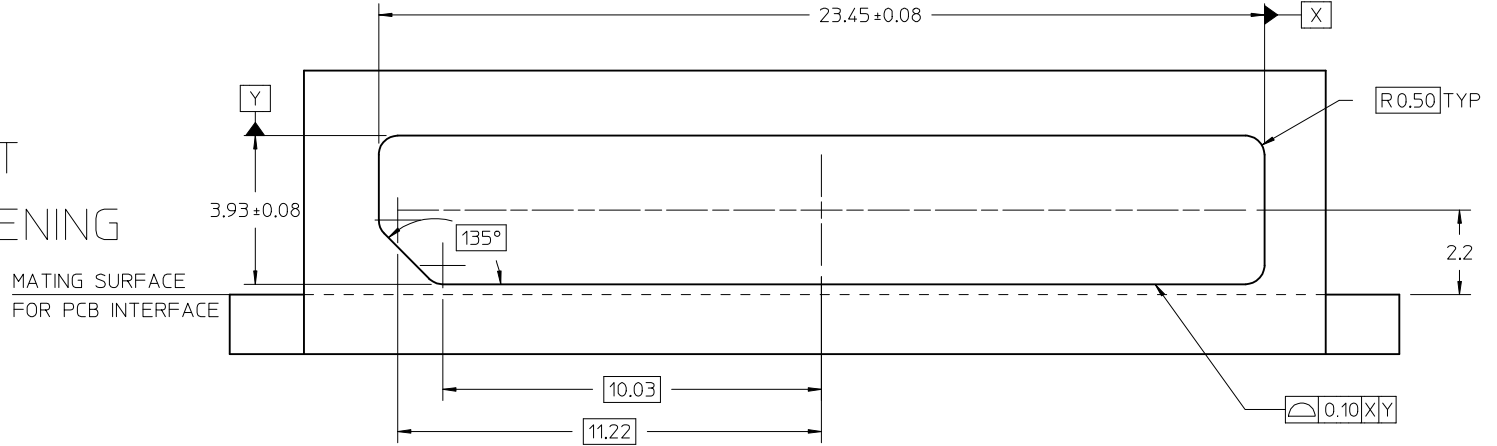


NOTES:

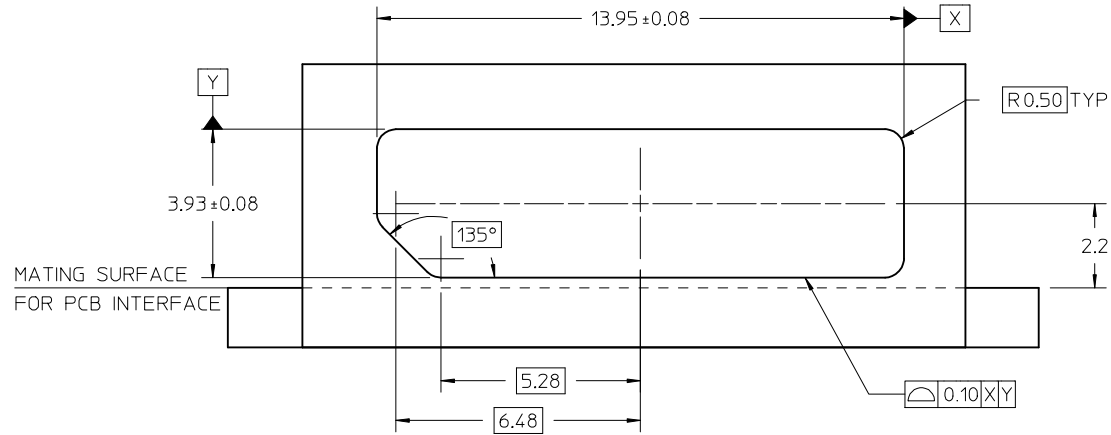
1. MINIMUM RECOMMENDED SPACING BETWEEN ADJACENT CONNECTOR IS 28.50mm
2. MINIMUM RECOMMENDED PCB THICKNESS: 1.57mm
3. CONNECTOR KEEP OUT AREA
4. DATUM -A- ESTABLISHED FROM TOP SURFACE OF PCB

SEE SHEET 1 EC NO: UCP2017-1264 DRWNSVANG01 2016/12/06 CHKD: TMC/LELL APPR: TMC/LELL 2017/04/24	QUALITY SYMBOLS	GENERAL TOLERANCES (UNLESS SPECIFIED)	DIMENSION STYLE MM ONLY	SCALE 15:1	DESIGN UNITS METRIC	THIRD ANGLE PROJECTION
	▽=0	mm INCH	DRAWN BY DATE BJANOWIAK 2015/05/11	TITLE NANO PITCH I/O FIXED RIGHT ANGLE 4X AND 8X	molex DOCUMENT NO. SD-173162-0001	SHEET NO. 9 OF 10
	▽=0	4 PLACES ± --- ± --- 3 PLACES ± --- ± --- 2 PLACES ± 0.13 ± --- 1 PLACE ± 0.25 ± --- 0 PLACE ± --- ± ---	CHECKED BY DATE	APPROVED BY DATE MBANAK I S 2015/09/18		
	▽=0	ANGULAR ±1/2°	DRAFT WHERE APPLICABLE MUST REMAIN WITHIN DIMENSIONS	SIZE SEE SHEET 1	THIS DRAWING CONTAINS INFORMATION THAT IS PROPRIETARY TO MOLEX INCORPORATED AND SHOULD NOT BE USED WITHOUT WRITTEN PERMISSION	

80 CIRCUIT PANEL OPENING



42 CIRCUIT PANEL OPENING



SEE SHEET 1 EC NO: UCP2017-1264 DRWNS:VANG01 2016/12/06 CHKD: APPR:TMCCLELL 2017/04/24	QUALITY SYMBOLS	GENERAL TOLERANCES (UNLESS SPECIFIED)	DIMENSION STYLE MM ONLY	SCALE 10:1	DESIGN UNITS METRIC	THIRD ANGLE PROJECTION
	▽=0	mm INCH	DRAWN BY DATE BJANOWIAK 2015/05/11	TITLE	NANO PITCH I/O FIXED RIGHT ANGLE 4X AND 8X molex	SHEET NO. 10 OF 10
	▽=0	4 PLACES ± --- ± ---	CHECKED BY DATE			
	▽=0	3 PLACES ± --- ± ---	APPROVED BY DATE MBANAKIS 2015/09/18			
		2 PLACES ± 0.13 ± ---	MATERIAL NO.	DOCUMENT NO.		
		1 PLACE ± 0.25 ± ---	SEE SHEET 1		SD-173162-0001	
		0 PLACE ± --- ± ---	DRAFT WHERE APPLICABLE MUST REMAIN WITHIN DIMENSIONS			
		ANGULAR ±1/2°	THIS DRAWING CONTAINS INFORMATION THAT IS PROPRIETARY TO MOLEX INCORPORATED AND SHOULD NOT BE USED WITHOUT WRITTEN PERMISSION			