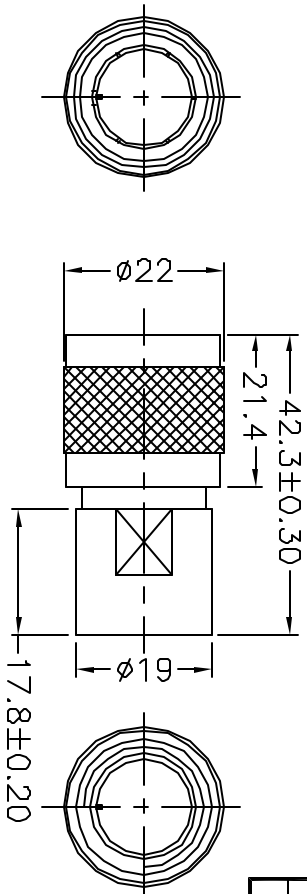
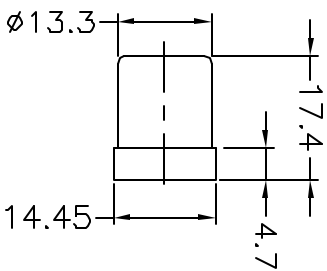


ALL RIGHTS RESERVED. NO PORTION OF THIS PUBLICATION, WHETHER IN WHOLE OR IN PART CAN BE REPRODUCED WITHOUT THE EXPRESS WRITTEN CONSENT OF SPC TECHNOLOGY.

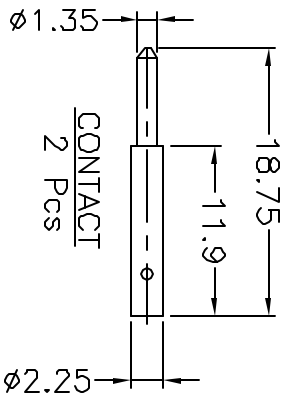
REVISONS		DOC. NO. SPC-F005	Effective 12/21/98	DCP No 890				
DCP #	REV	DESCRIPTION	DRAWN	DATE	CHECKD	DATE	APPRVD	DATE
1959	A	RELEASED	JC	8/21/91	JN	08/25/08	JN	08/25/08



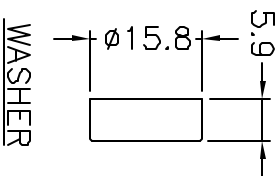
BODY



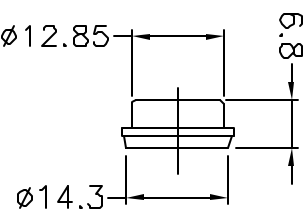
INSULATOR



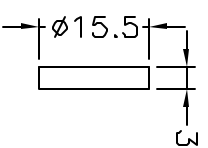
CONTACT  
2 Pcs



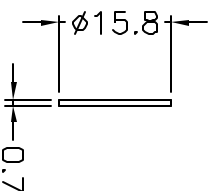
WASHER



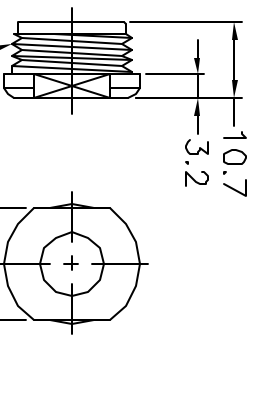
TOP HAT



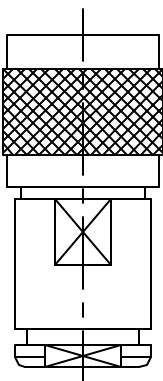
GASKET



FLAT WASHER



NUT



ASSEMBLY

- Specification
1. Body: Brass, Nickel-Plated
  2. Nut: Brass, Nickel-Plated
  3. Flat Washer: Brass, Nickel-Plated
  4. Insulator: PBT+30% Fibre Glass UL 94V-0
  5. Top Hat: Brass, Nickel-Plated
  6. Washer: Brass, Nickel-Plated
  7. Gasket: Rubber
  8. Contact: Brass, Gold-Plated

DISCLAIMER:  
ALL STATEMENTS AND TECHNICAL INFORMATION CONTAINED HEREIN ARE BASED UPON INFORMATION AND/OR TESTS WE BELIEVE TO BE ACCURATE AND RELIABLE. SINCE CONDITIONS OF USE ARE BEYOND OUR CONTROL, THE USER SHALL DETERMINE THE SUITABILITY OF THE PRODUCT FOR THE INTENDED USE AND ASSUME ALL RISK AND LIABILITY WHATSOEVER IN CONNECTION THEREWITH.



DRAWING TITLE: Twinaxial Cable Plug

Tolerances: Unless Otherwise Specified:  
X=±0.2 [.008]  
XX=±0.12 [.005]

DRAWN BY:	DATE:
JC	8/21/91
CHECKED BY:	DATE:
JN	09/25/08
APPROVED BY:	DATE:
JN	09/25/08

SIZE	DWG. NO.	ELECTRONIC FILE	REV
A	SPC21084	10MB335.dwg	A
SCALE:	NTS	U.O.M.: Millimeters	SHEET: 1 OF 1