

## User's Guide

# D0107LT-33-0701A

# VFD- **RoHS Compliant**

(Vacuum Fluorescent Display)

---

For product support, contact

**Newhaven Display International**  
**2511 Technology Drive, #101**  
**Elgin, IL 60124**

Tel: (847) 844-8795 Fax: (847) 844-8796

February 21, 2008

# Vacuum Fluorescent Display Specification

PART NUMBER: D0107LT-33-0701A

FEATURES: 7 Digits, 7-Segmented, Instrumentation, Scales

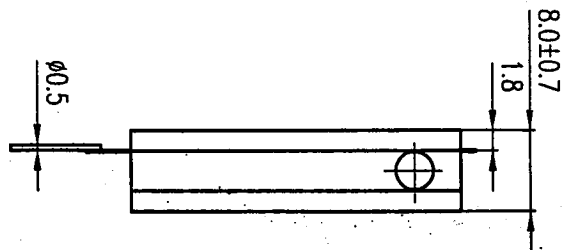
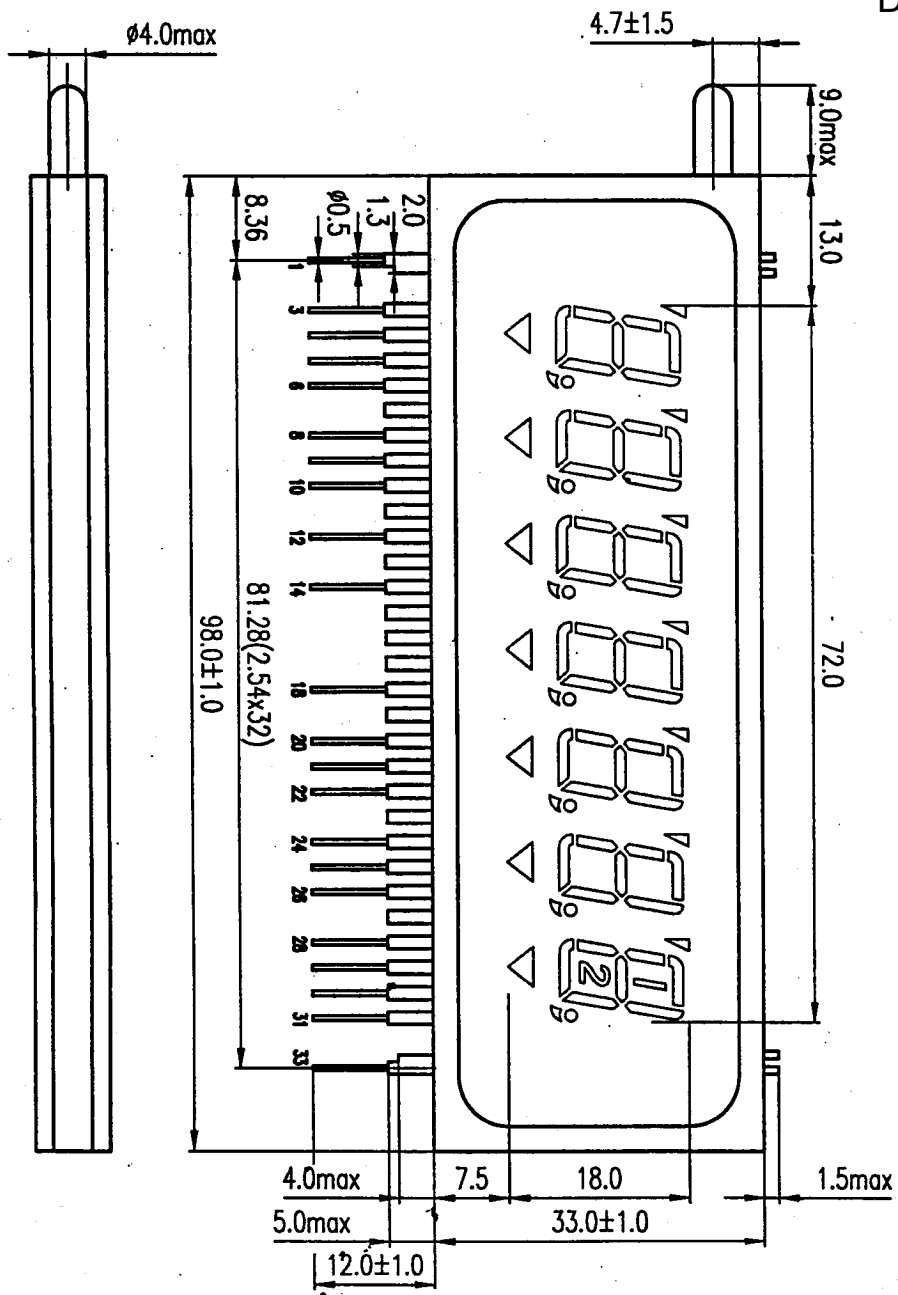
APPLICATION: Character Display ( 7-Segmented )

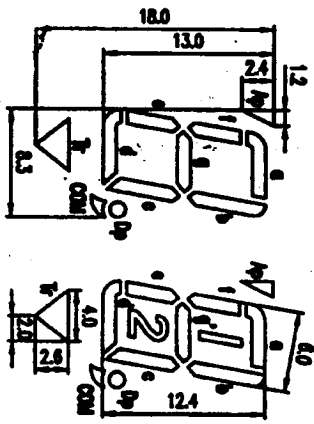
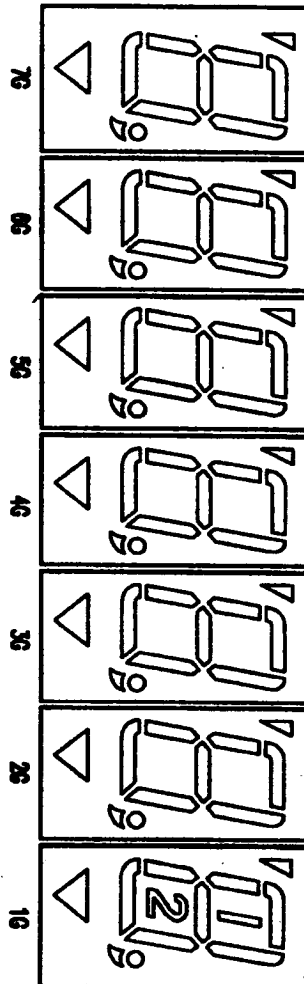
RATINGS: Below

Outer Dimensions	Panel Length	P.L.	98.0	mm	
	Panel Height	P.H.	33.0	mm	
	Panel Thickness	P.T.	8.0	mm	
Leads	Lead Pitch	L.P.	2.54	mm	
	Lead Out	-	SIL		
Character Size	Character Height	C.H.	12.4	mm	
	Character Width	C.W.	6.0	mm	
Item	Symbol	Min.	Recommended	Max.	Unit
Filament Voltage	Ef	2.9	3.3	3.6	Vac
Peak Grid Voltage	ec	-	35.0	42.0	Vp-p
Peak Anode Voltage	eb	-	35.0	42.0	Vp-p
-	-	-	-	-	-
Duty Cycle	Du	-	1/10	-	-
Pulse Width	tp	-	100	-	uS
Operating Temperature	Topr	-40	-	+ 85	C
Storage Temperature	Tstg	-50	-	+ 95	C
Color of Illumination	Green				

**Electrical  
Characteristics**

Item	Symbol	Test Condition	Min.	Typical	Max.	Unit	
<b>Filament Current</b>	if	Ef = 3.3 Vac	97.0	108.0	119.0	mAac	
	-	eb = ec = 0	-	-	-	-	
<b>Anode Current</b>	ib/1G~6G	Ef = 3.3 Vac eb = 35.0 Vp-p ec = 35.0 Vp-p Du = 1/10 Tp = 100 uS	-	8.0	16.0	MAp-p	
	-		-	9.0	18.0	MAp-p	
	-		-	-	-	-	MAp-p
	-		-	-	-	-	MAp-p
	-		-	-	-	-	MAp-p
<b>Grid Current</b>	ic / 1G~6G		-	8.5	17.0	MAp-p	
	ic / 7G		-	9.0	18.0	MAp-p	
	-		-	-	-	-	MAp-p
	-		-	-	-	-	MAp-p
	-		-	-	-	-	MAp-p
<b>Luminance</b>	L(G)		430	860	-	cd/m <sup>2</sup>	
	-		(125)	(250)	-	fL	
<b>Luminance Ratio</b>	Lmin/Lmax		50	-	-	%	
<b>Grid Cut-off Voltage</b>	Ecco	Ef = 3.3 Vac eb = 35.0 Vdc	-4.0	-	-	Vdc	
<b>Anode Cut-off Voltage</b>	Ebco	Ef = 3.3 Vac ec = 35.0 Vp-p Du = 1/10 Tp = 100uS	-2.0	-	-	Vdc	





Pin No.	1	2	3	4	5	6	7	8	9	10	11
Connect	F	NP	P(Ap)	P(I)	P(g)	7G	NC	P(e)	P(d)	6G	NC
Pin No.	12	13	14	15	16	17	18	19	20	21	22
Connect	P(Tr)	NC	5G	NC	NC	NC	4G	NC	P(COM)	P(DP)	3G
Pin No.	23	24	25	26	27	28	29	30	31	32	33
Connect	NC	P(c)	P(1 2)	2G	NC	P(g)	P(b)	1G	P(o)	NP	F

**NOTES:**

F: Filament

P: Anode

NC: No Connect

G: Grid

NP: No Pin

# Mouser Electronics

Authorized Distributor

Click to View Pricing, Inventory, Delivery & Lifecycle Information:

[Newhaven Display:](#)

[D0107LT-33-0701A](#)