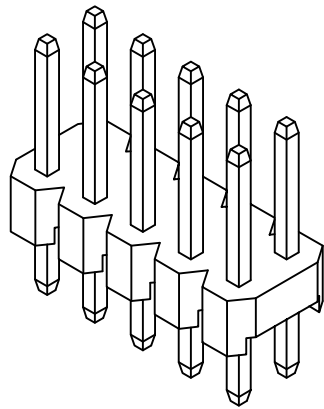


SIGN	DATE	DESCRIPTION	APPROVER

THIS IS CAD DRAWING, DO NOT REVISE MANUALLY!!!



Dimensions in inches	
A	B
095	110
105	135
125	125
170	160
215	115
224	100
230	100
230	120
230	300
235	195
250	080
265	115
276	116
295	135
318	125
340	090
420	115
430	100
500	120
520	110
520	230
530	110
720	115
820	110

SPECIFICATIONS

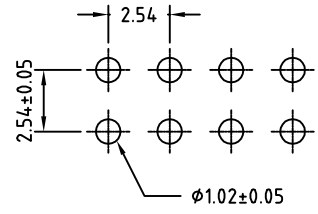
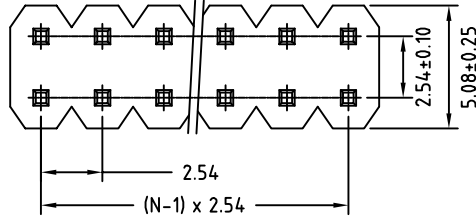
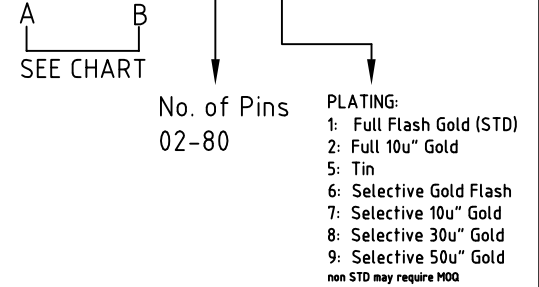
Current Rating: 3A AC,DC
Voltage Rating: 250V AC,DC
Temperature Range: -25°C ~ +85°C
Contact Resistance: <20mΩ
Insulation Resistance: >1000MΩ
Withstanding Voltage: 1500V AC/minute
Insulator Material: Nylon 6T,UL94V-0
Color: Black

MAXIMUM SOLDERING TEMPERATURE
Soldering Time: 5 ± 0.5 seconds
Solder Pot: 245 ± 5°C

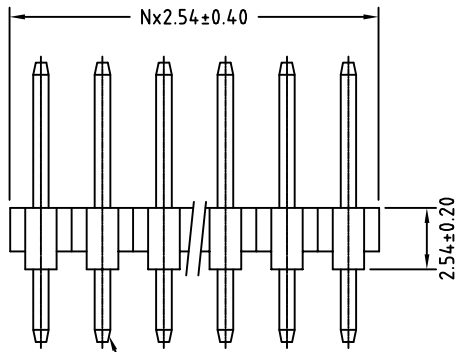
RoHS Compliant

PART NUMBER:

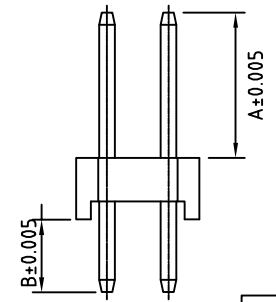
PH2-XXX/XXX-XXX



P.C.B LAYOUT



PIN 0.64 SQ



THESE DRAWINGS AND SPECIFICATIONS ARE THE PROPERTY OF ON-SHORE TECHNOLOGY, INC. AND SHALL NOT BE REPRODUCED, COPIED OR USED IN ANY MANNER WITHOUT THE PRIOR WRITTEN CONSENT OF ON-SHORE TECHNOLOGY, INC.



TITLE		PH2 - 2.54mm Pin header, thru hole, dual row	
PART NO.	PH2-A/B-XXX	DWG NO.	PH2-A/B-XXX.DWG
APPROVED	CHECKED	DESIGNED	DRAWN
	Marvin 2002.03.12	Marvin 2002.03.12	Marvin 2002.03.12
		9242	
		Tolerance	
		X.* ±1"	
		X.X ±0.25	
		X.XX ±0.15	
		X.XXX ±0.05	
		UNIT: mm	
		SCALE: NONE	
		REV.: A	
		SHEET: 01/01	