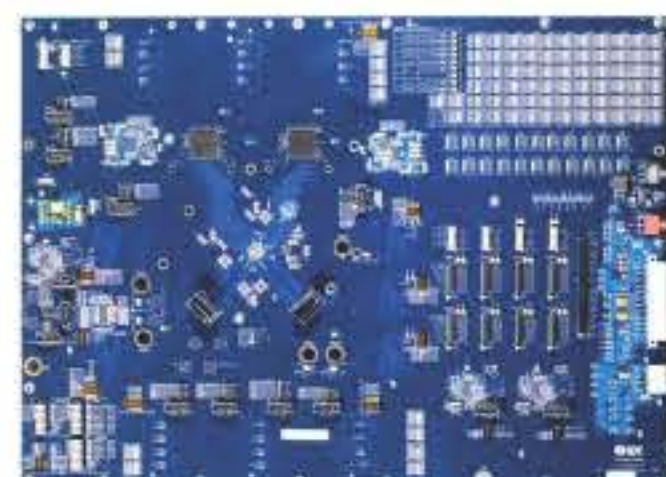


DOWNLOAD MANUAL - EVAL BOARD



89KTPES12NT12G2 Evaluation Board SDK for the 89H12NT12G2

The EB-LOGAN-19 Evaluation Board provides an evaluation platform for the PES24NT24G2 switch and for other members of this switch family including PES16NT16G2 and PES12NT12G2.



Status: **Active**

Product Quick Links

- Product Options
- Technical Documentation
- Software & Tools
- Related Products
- Contact Sales

Detailed information related to configuration of number of ports and lanes in the switch device can be found in the Device User Manual and the Device Datasheet. The evaluation board, along with additional adapters and daughter boards provided by IDT, can be configured to test every possible combination of the number of lanes and ports offered by the switch. Advanced capabilities such as switch partitioning, NTB, DMA and local port clocking can be evaluated with the evaluation board.

The EB-LOGAN-19 brings out all 24 lanes of the device to two Mezzanine connectors and two SAS connectors located close to the device - one connector per stack of 4 lanes. Various types of daughter cards (provided by IDT) can then be plugged into the Mezzanine connectors to facilitate connectivity to one x8 or two x4 or four x2 or eight x1 link partners. Link partners may be plugged directly into these daughter cards or they can be connected to these daughter cards via SAS or SATA cables and a different board with PCIe slots known as the 12-PACK board (provided by IDT). Given that majority of the hosts / servers offer PCIe standard slots, IDT provides the necessary adapter cards that may be plugged into these host / server slots as well as the cables that connect such adapters to the daughter cards which in turn are plugged into the main evaluation board on which the IDT PCIe switch device is populated.

Features

Hardware

- PES24NT24G2 PCIe 24-port switch
- Upstream, Downstream Ports
- Numerous user selectable configurations set using onboard jumpers and DIP-switches
- SMBUS Slave Interface (4 pin header)
- SMBUS Master Interface connected to the Serial EEPROMs through I/O expander
- Push button for Warm Reset
- Many LEDs to display status, reset, power, hotplug, etc.
- JTAG connector to the PES24NT24G2 JTAG pins.

Software

- Installation programs
- GUI based application for Windows and Linux

Product Options

Part Status	Orderable Part ID	Sample & Buy
Active	89KTPES12NT12G2	Check Availability

Technical Documentation

Title	Type	Format	File Size	Date
User Guides & Manuals				
EB-LOGAN-19 REV-B Evaluation Board User Manual (Fab: 18-692-001)	Manual - Eval Board	PDF	5.70 MB	02/16/2011
PCI Express Browser Rev 5.0.2 User Manual	Manual	PDF	2.49 MB	12/03/2010
Other				
IDT PCI Express Solutions Overview	Overview	PDF	2.43 MB	08/14/2013

Software & Tools

Title	Type	Format	File Size	Date
PCI Express Browser Rev 4.9 Linux Installation	Software Tool	ZIP	48.85 MB	01/19/2009
PCI Express Browser Rev 5.0.2 Windows Installation	Software Tool	ZIP	54.45 MB	12/03/2010
PCI Express Browser Rev 5.0.2 Windows Installation - Digitally Signed	Software Tool	ZIP	104.57 MB	06/16/2011

Related Products

Product ID	Title
89H12NT12G2	12-lane, 12-port PCIe Gen2 System Interconnect Switch

[GET TECHNICAL SUPPORT](#) [CONTACT SALES OFFICE](#)