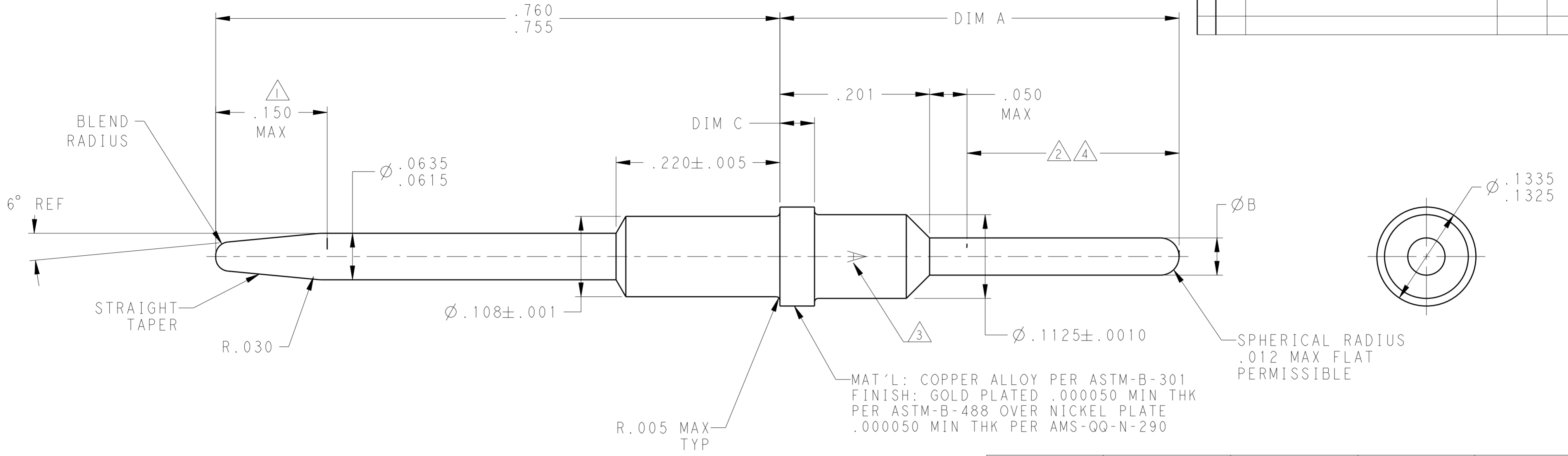


THIS DRAWING IS UNPUBLISHED. RELEASED FOR PUBLICATION  
 © COPYRIGHT - BY - ALL RIGHTS RESERVED.

LOC	DIST	REVISIONS			
P	LTR	DESCRIPTION	DATE	DWN	APVD
-	-	W	REV PER ECO 13-009837	6-13-13	CT DM



--	.0445-.0485	.048-.052	.776	4-448139-3
② ④	.044-.048	.059 MAX	.701	4-448139-0
②	.044-.048	.059 MAX	.701	3-448139-9
--	.044-.048	.048-.052	.701±.005	3-448139-8
②	.044-.048	.059 MAX	.617±.005	3-448139-5
② ④	.044-.048	.059 MAX	.617±.005	3-448139-4
②	.0445-.0485	.048-.052	.606	3-448139-3
--	.0445-.0485	.059 MAX	.826±.005	3-448139-0
②	.0445-.0485	.048-.052	.826±.005	2-448139-9
--	.0445-.0485	.048-.052	.576	2-448139-5
②	.0445-.0485	.059 MAX	.651	2-448139-2
--	.044-.048	.048-.052	.468±.005	2-448139-1
②	.044-.048	.048-.052	.617±.005	1-448139-8
②	.0445-.0485	.059 MAX	.536±.005	1-448139-5
--	.044-.048	.048-.052	.505±.005	1-448139-4
--	.0445-.0485	.048-.052	.536	1-448139-1
--	.0445-.0485	.0615-.0630	.415	448139-8
--	.0445-.0485	.048-.052	.651	448139-6
--	.0445-.0485	.048-.052	.536	448139-3
REMARKS	DIM C	DIM B	DIM A	PART NO.

- ① ELECTRICAL ENGAGEMENT POINT.
- ② THIS AREA SOLDER DIPPED.
- ③ MANUFACTURERS LOGO; LACATION & ORIENTATION OPTIONAL.
- ④ SOLDER IS RoHS-COMPLIANT Sn.

THIS DRAWING IS A CONTROLLED DOCUMENT.

DIMENSIONS: INCHES	TOLERANCES UNLESS OTHERWISE SPECIFIED: 0 PLC ± 1 PLC ± 2 PLC ± 3 PLC ±.010 4 PLC ± ANGLES ± FINISH ±	DWN: C.C. THOMAS 27OCT2009 CHK: K. THACKSTON 27OCT2009 APVD: K. THACKSTON 27OCT2009	TE Connectivity	
MATERIAL: SEE TABLE	SEE CALLOUTS	PRODUCT SPEC: - APPLICATION SPEC: - WEIGHT: -	NAME: POSTED PIN CONTACT, SIZE 16, ARINC 600	
CUSTOMER DRAWING		SIZE: A2	CAGE CODE: 00779	DRAWING NO: C-448139
SCALE: 10:1		SHEET 1 OF 1		REV W