

AMPMODU MTE INTERCONNECT SYSTEM

QUICK REFERENCE GUIDE

AMPMODU MTE INTERCONNECT SYSTEM

INTRODUCTION

The TE Connectivity (TE)'s **AMPMODU MTE** interconnection system is utilized in wire-to-board and wire-to-wire applications, and can be found in many types of electronic equipment including computers, copiers, commercial printers, appliances, medical equipment, and automotive controls. The product implements Insulation Displacement Contacts (IDC) or Crimp Snap-In contacts to suit customer's needs.

FEATURES AND BENEFITS

- Assembly designs offer latching and polarization
- Coupling shrouds permit ganging of smaller receptacle and pin assemblies with guide ribs to form larger single or double row latching connectors
- Available in three platings
- Swage option on posts provides retention in PC board
- High temperature option is SMT compatible
- Applicable Sizes 2-25

PRODUCT APPLICATIONS

- Medical Instruments
- Automotive Controls
- Copiers
- Appliances
- Commercial Printers
- Vending
- Computers
- Instrumentation & Test Equipment
- Telecommunications
- Storage Equipment

INSULATION DISPLACEMENT VS. CRIMP SNAP-IN

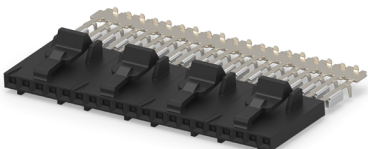
IDC	Crimp Snap-In
Time savings	Cost effective
Preloaded contacts	Flexibility (AWG)
Automation	Manual labor
Mates with same headers as crimp	Mates with same headers as IDC

AMPMODU MTE INTERCONNECT SYSTEM

RECEPTACLE ASSEMBLIES

IDC AMPMODU MTE

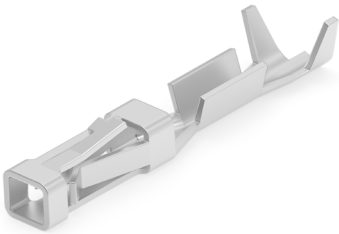
MTE Receptacle Assemblies

Product Image	Size	AWG	Plating		
			15 μ " Au	30 μ " Au	Matte Tin
	2	22-26	5-103957-1	5-103958-1	5-103956-1
	3		5-103957-2	5-103958-2	5-103956-2
	4		5-103957-3	5-103958-3	5-103956-3
	5		5-103957-4	5-103958-4	5-103956-4

	25	-	7-103734-4	-	
	2	26-30	5-103960-1	5-103961-1	5-103959-1
	3		5-103960-2	5-103961-2	5-103959-2
	4		5-103960-3	5-103961-3	5-103959-3
	5		5-103960-4	5-103961-4	5-103959-4

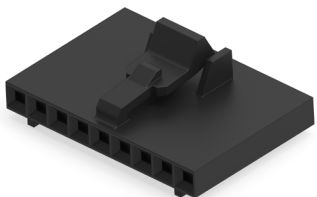
CRIMP SNAP-IN SHORT POINT CONTACT

Crimp Snap-In Short Point Contact

Product Image	Plating	AWG	Strip	Loose Piece
	15 μ " Au	20-24	104479-9	1-104479-2
	30 μ " Au		1-104479-0	1-104479-3
	Matte Tin		104479-8	1-104479-1
	15 μ " Au	22-26	1-104480-2	1-104480-5
	30 μ " Au		1-104480-3	1-104480-6
	Matte Tin		1-104480-7	1-104480-4
	15 μ " Au	28-32	1-104481-0	1-104481-2
	30 μ " Au		1-104481-1	1-104481-3
	Matte Tin		5-104481-2	5-104481-6

AMPMODU MTE HOUSING

Wire Receptacle Housing

Product Image	Plating	AWG
	2	104257-1
	3	104257-2
	4	104257-3
	5	104257-4

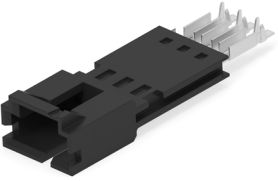
	25	2-104257-4

AMPMODU MTE INTERCONNECT SYSTEM

PIN COUNTERPARTS

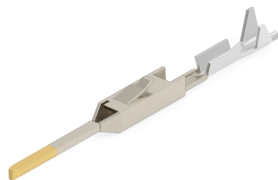
IDC AMPMODU MTE

MTE Pin Assemblies

Product Image	Size	AWG	Plating		
			15 μ " Au	30 μ " Au	Matte Tin
	2	22-26	5-103945-1	5-103946-1	5-103944-1
	3		5-103945-2	5-103946-2	5-103944-2
	4		5-103945-3	5-103946-3	5-103944-3
	5		5-103945-4	5-103946-4	5-103944-4
	2	26-30	5-103948-1	5-103949-1	5-103947-1
	3		5-103948-2	5-103949-2	5-103947-2
	4		5-103948-3	5-103949-3	5-103947-3
	5		5-103948-4	5-103949-4	-

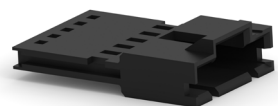
CRIMP SNAP-IN POINT CONTACT

Short Point Replacement Contacts

Product Image	Plating	AWG	Strip	Loose Piece
	15 μ " Au	22-26	5-104505-4	5-104505-5
	30 μ " Au		5-104505-6	5-104505-7
	Matte Tin		5-104505-2	5-104505-3
	15 μ " Au	28-32	5-104506-4	5-104506-5
	30 μ " Au		5-104506-6	5-104506-7
	Matte Tin		-	5-104506-3

AMPMODU MTE HOUSING

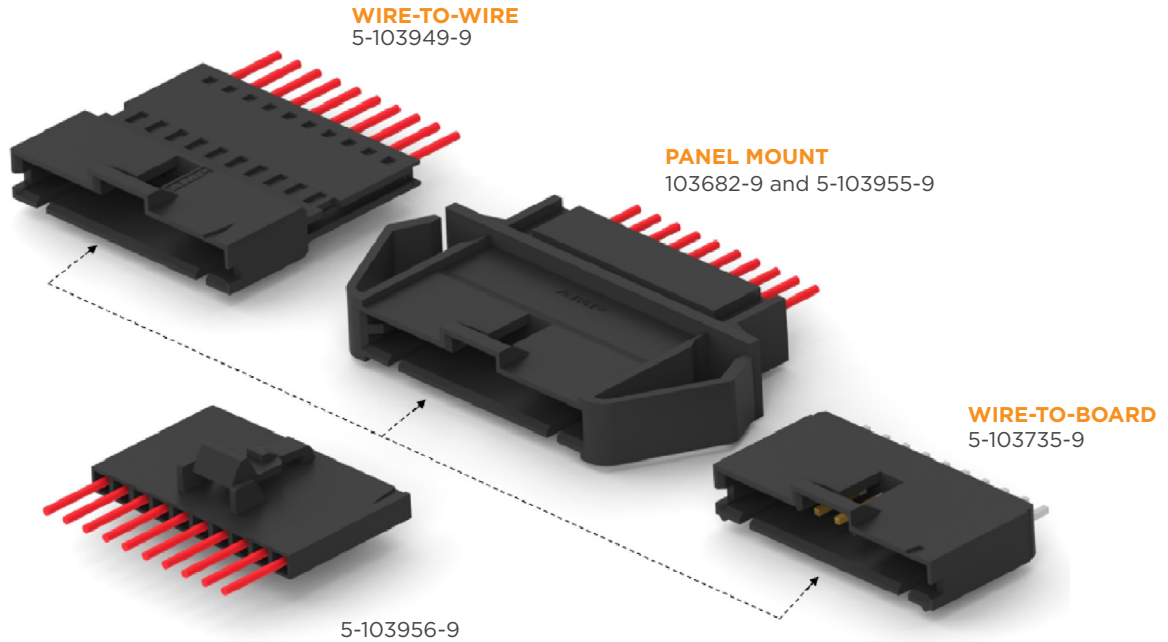
MTE Receptacle Housings

Product Image	Size	AWG
	2	103653-1
	3	103653-2
	4	103653-3
	5	103653-4

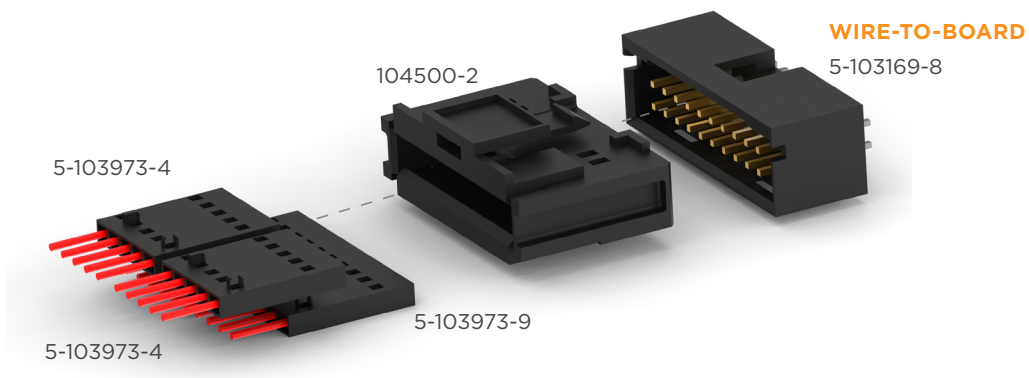
	25	2-103653-4

AMPMODU MTE INTERCONNECT SYSTEM

TYPICAL APPLICATION OF SINGLE-ROW COUPLING SHROUD AND MATING AMPMODU MTE PRODUCTS



TYPICAL APPLICATION OF DOUBLE-ROW COUPLING SHROUD AND MATING AMPMODU MTE PRODUCTS



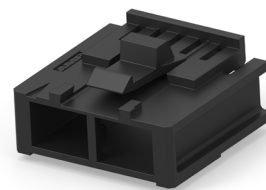
COUPLING SHROUDS

SINGLE ROW



103682 (2-25P)
Panel Mount

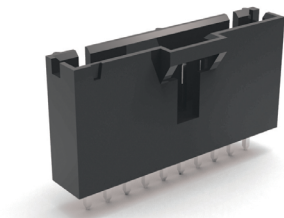
DOUBLE ROW



103681 (8-16P), 104500 (18-50P)
Double Row

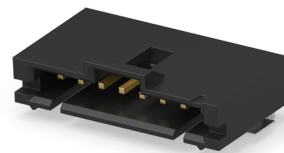
SINGLE ROW, HEADER ON BOARD

VERTICAL, THT



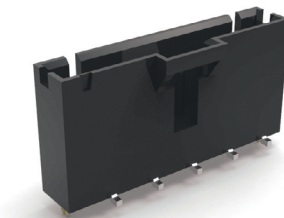
Plating	Standard	Swaged Tail
30 μ" Au	103735	103908
15 μ" Au	104363	104362
Matte Tin	103639	103669

RIGHT ANGLE, THT



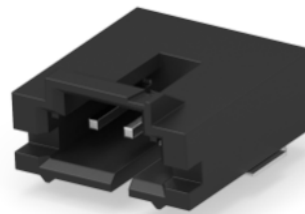
Plating	w/ Hold Down	w/o Hold Down
30 μ" Au	103904	104935
15 μ" Au	103673	103635
	104361	
Matte Tin	103672	103634

VERTICAL, SMT



Plating	w/ Hold Down
30 μ" Au	1375583
15 μ" Au	1375582
Matte Tin	1375549

RIGHT ANGLE, SMT



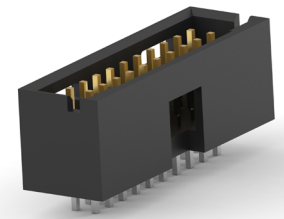
Plating	w/ Hold Down
30 μ" Au	147323
15 μ" Au	147278
Matte Tin	147324

Part Number:

- For all Single Row Headers: 5-xxxxxxx-1 (2P) - 7-xxxxxxx-4 (25P);
- Please visit TE.com for more product detail.

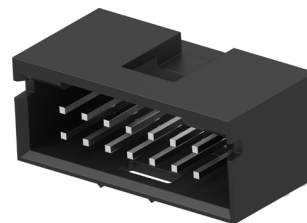
DOUBLE ROW, HEADER ON BOARD

VERTICAL, THT



Plating	Standard	w/ Hold Down
30 μ" Au	103169	-
15 μ" Au	102619	104317
Matte Tin	87587	-

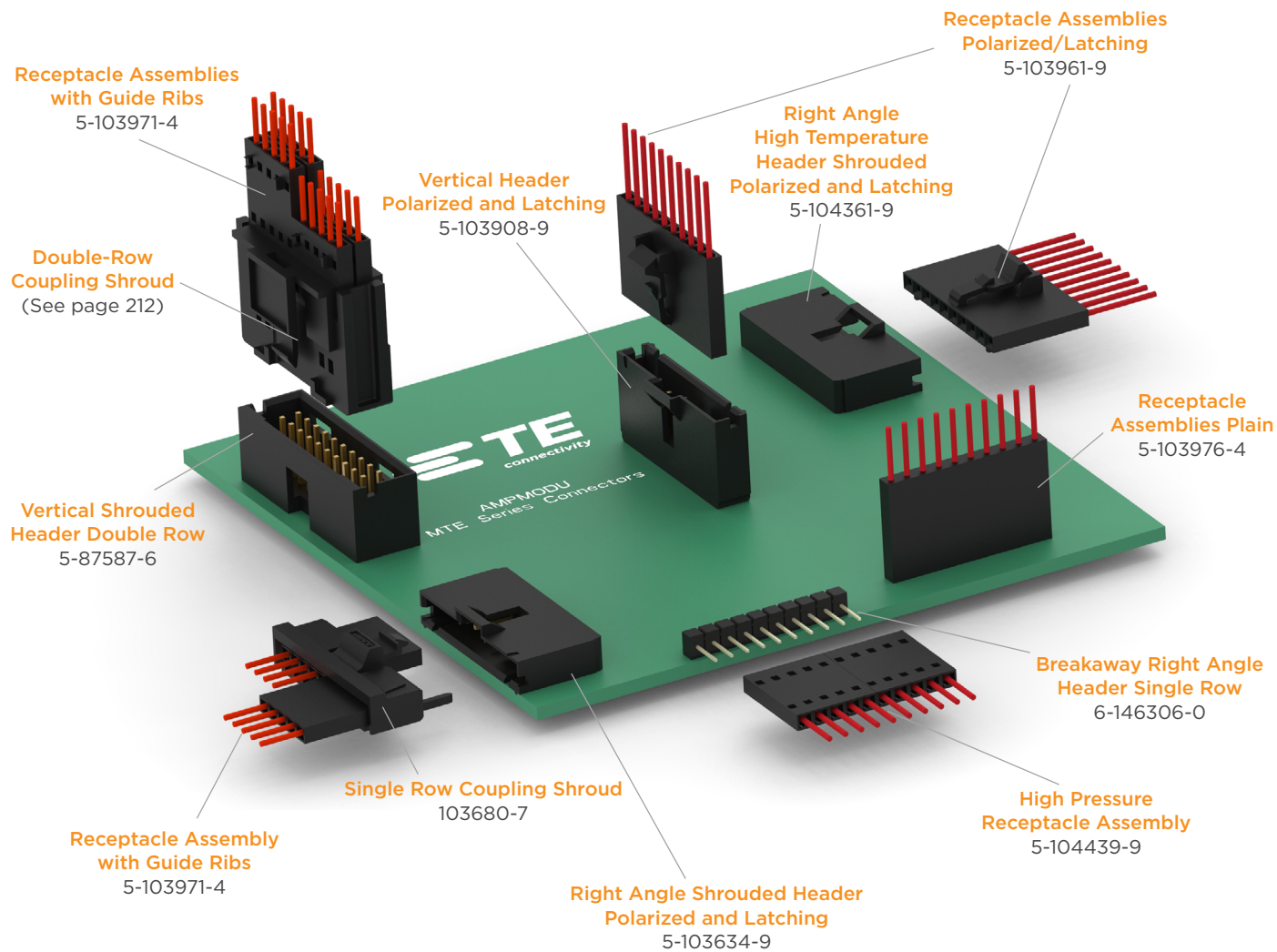
RIGHT ANGLE, THT



Plating	Standard	w/o Hold Down
30 μ" Au	103167	-
15 μ" Au	102570	104319
Matte Tin	87577	-

Part Number:

- Vertical, THT, Standard: 5-xxxxxxx-1 (6P) - 7-xxxxxxx-3 (50P);
- Right Angle, THT, Standard: 5-xxxxxxx-1 (8P) - 7-xxxxxxx-2 (50P);
- Please visit TE.com for more product detail.



APPLICATION TOOLING

AMPMODU MTE Part Number	Tooling Part Number	Tooling Description	Instruction Sheet
All Receptacle Assembly Part Numbers Listed Below	58074-1	Manual Pistol Grip	408-6790
	58075-1	Pneumatic Pistol Grip	408-6789
	58338-1	Bench Mounted Pneumatic Power Assembly	408-9393
	58336-1	MTE Modular Head	408-9359

QUESTIONS THAT WILL HELP YOU BETTER SELECT THE PRODUCT THAT YOU NEED:

1. What are the current rating (amps) and voltage requirements of AMPMODU MTE connectors?

- 3 amps for a single contact in free air, 267 V (operating voltage)

2. What type and size requirements?

- #22-#30 AWG range for IDC configurations
- #20-#32 AWG for crimp snap-in replacement contacts

3. What are the number of positions needed?

- 2-25 positions, double row coupling shrouds allow 8-50 position configurations

4. Available space?

- .100 centerline and .100 x .100 centerline (coupling shrouds mating to PCB headers)

5. Configuration/orientation?

- Right angle, vertical, single/double row

6. Operating temperature requirements?

- Will accommodate -65°C to +105°C range

7. Environmental Considerations?

Refer to TE product specifications 108-25034

- 108-25034-2 (MTE surface mount product)
- 108-1472 and 108-1472-1 (Short Point)

Part numbers in this brochure are RoHS Compliant*, unless marked otherwise *as defined www.te.com/leadfree

te.com

©2025 TE Connectivity plc. All Rights Reserved.

AMPMODU, TE Connectivity, TE connectivity (logo) and Every Connection Counts are trademarks owned or licensed by the TE Connectivity plc. family of companies. All other logos, products and/or company names referred to herein might be trademarks of their respective owners.

While TE has made every reasonable effort to ensure the accuracy of the information in this document, TE does not guarantee that it is error-free, nor does TE make any other representation, warranty or guarantee that the information is accurate, correct, reliable or current. TE reserves the right to make any changes to the information contained herein without prior notice. TE Connectivity assumes only those obligations set forth in the terms and conditions for this product and shall in no event be liable for any incidental, indirect, or consequential damages arising out of the sale, resale, use, or misapplication of the product. TE expressly disclaims any implied warranties with respect to the information contained herein, including, but not limited to, implied warranties of merchantability or fitness for a particular purpose. Dimensions, specifications and/or information contained herein are for reference purposes only and are subject to change without notice. Consult TE for the latest dimensions, specifications and/or information. Users of TE Connectivity products must make their own assessment as to whether the respective product is suitable for the respective desired application.

02/26 ED