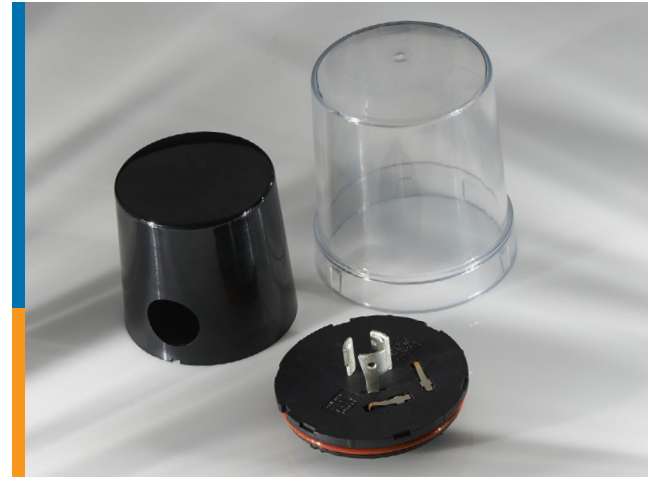


LUMAWISE ENDURANCE N CONTROL BASE, SLEEVE AND COVER

TE Connectivity's (TE) ANSI 136.41 compliant 76 mm and 81 mm diameter photo control base assemblies with sleeves and covers in varying heights, provide a total power and signal interface between the photo control and dimming receptacle. This interface can be used in applications such as LED outdoor roadway, street and area lighting fixtures. The base assembly solution includes power twist lock terminals, spring leaf signal terminals and a separately packaged foam gasket. When coupled with the 5-VA rated cover or in combination with side or topside aperture opening colored sleeves, the fully assembled photo control achieves an IP66 seal rating.



Applications

- Outdoor roadway and street lighting
- Parking lots
- Pathway and trails
- Parks

Electrical

- Positions: 5 and 7

Mechanical

- Operating Temperature Range: -40°C to +105° C

Specifications

- Product Specification: [108-32125](#)
- Application Specification: [114-32159](#)

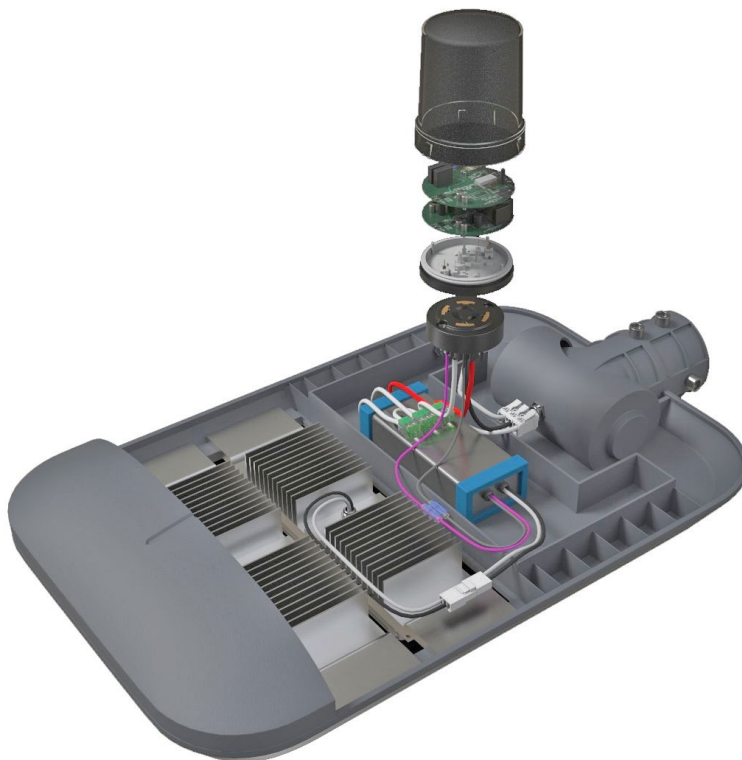
Materials

- Contact Plating: Tin plated power contacts
Gold plated signal contacts
- Housing Color: Base (black)
Cover (clear and transparent)
- Housing Material: Base (UL 94 V-0)
Cover (Polycarbonate)
Sleeve (PBT)

Benefits

- Achieve long term reliability using TE's proven power and signal interface
- Translucent covers allow transmission of daylight to the light sensing device
- Achieve protection against dust and heavy jet spray with an IP66 rated solution
- Meets the flammability rating with a UL 94 5-VA rated cover
- Sleeves are designed with side or topside aperture openings to accommodate directional light sensing devices
- Colored sleeves are available that designate voltage rating or in support of customer specific requests

LUMAWISE ENDURANCE N CONTROL BASE, SLEEVE AND COVER



Product Selection Information

76 mm Base, Sleeve and Cover

	Part Number	Description	Height	Color
	2306128-1	Cover, Light Controller	50 mm	Translucent
	1-2306128-1	Cover, Light Controller	50 mm	Clear
	2311664-1	Cover, Light Controller	75 mm	Translucent
	1-2311664-1	Cover, Light Controller	75 mm	Clear
	2-2311664-1	Cover, Light Controller w/Flat Surface**	75 mm	Translucent
	2213748-1	Cover, Light Controller	98 mm	Translucent
	1-2213748-1	Cover, Light Controller	98 mm	Clear
	2306129-1	Cover, Light Controller	130 mm	Translucent
1-2306129-1	Cover, Light Controller	130 mm	Clear	
	2306132-1	Sleeve, Controller - Side Aperture	50 mm	Black
	1-2306132-1	Sleeve, Controller - Topside Aperture	50 mm	Black
	2213805-1	Sleeve, Controller - Topside Aperture	98 mm	Black
	1-2213805-1	Sleeve, Controller - Side Aperture	98 mm	Black
	2-2213805-0	Sleeve, Controller	98 mm	Blue
	2306133-1	Sleeve, Controller - Side Aperture	130 mm	Black
	1-2306133-1	Sleeve, Controller - Topside Aperture	130 mm	Black
	1-2213871-1	Light Controller Base Assembly - 5 Position*		
	2213730-1	Light Controller Base Assembly - 7 Position		
	2213871-1	Light Controller Base Assembly - 7 Position*		

*Accepts sleeves

**Flat area provides a surface for mounting a communication cable or antenna



Product Selection Information

81 mm Base, Sleeve and Cover

	Part Number	Description	Height	Color
	2315539-1	Cover, Light Controller	62 mm	Translucent
	1-2315539-1	Cover, Light Controller	62 mm	Clear
	2338716-1	Cover, Light Controller	80 mm	Translucent
	1-2338716-1	Cover, Light Controller	80 mm	Clear
	2306130-1	Cover, Light Controller	98 mm	Translucent
	1-2306130-1	Cover, Light Controller	98 mm	Clear
	2213996-1	Sleeve, Controller - Top Aperture	98 mm	Black
	1-2213996-1	Sleeve, Controller - Side Aperture	98 mm	Black
	1-2213871-2	Light Controller Base Assembly - 5 Position		
	2213871-2	Light Controller Base Assembly - 7 Position		
	2325661-1	Shorting Base Assembly - 7 Position		
	1-2325661-1	Shorting Base Assembly with Vent - 7 Position		

te.com

© 2018 TE Connectivity. All Rights Reserved. LUMAWISE, TE, TE Connectivity, and the TE connectivity (logo) are trademarks of the TE Connectivity. Other logos, product and Company names mentioned herein may be trademarks of their respective owners.

While TE has made every reasonable effort to ensure the accuracy of the information in this brochure, TE does not guarantee that it is error-free, nor does TE make any other representation, warranty or guarantee that the information is accurate, correct, reliable or current. TE reserves the right to make any adjustments to the information contained herein at any time without notice. TE expressly disclaims all implied warranties regarding the information contained herein, including, but not limited to, any implied warranties of merchantability or fitness for a particular purpose. The dimensions in this catalog are for reference purposes only and are subject to change without notice. Specifications are subject to change without notice. Consult TE for the latest dimensions and design specifications.

1-1773879-1 JN 11/2018

USA: +1 (800) 522-6752
Canada: +1 (905) 475-6222
Mexico: +52 (0) 55-1106-0800
Latin/S. America: +54 (0) 11-4733-2200
Germany: +49 (0) 6251-133-1999
UK: +44 (0) 800-267666
France: +33 (0) 1-3420-8686
The Netherlands: +31 (0) 73-6246-999
China: +86 (0) 400-820-6015

Mouser Electronics

Authorized Distributor

Click to View Pricing, Inventory, Delivery & Lifecycle Information:

[TE Connectivity:](#)

[2213871-1](#)