

THIS DRAWING IS UNPUBLISHED  
 VERTRÄULICHE UNVERÖFFENTLICHTE ZEICHNUNG  
 © COPYRIGHT 1985

RELEASED FOR PUBLICATION  
 FREI FUER VERÖFFENTLICHUNG  
 BY AMP INCORPORATED. ALL RIGHTS RESERVED.  
 ALLE RECHTE VORBEHALTEN

MATED WITH:  
 PASSEND ZU: -

LOC DIST  
 A I -

REVISIONS ÄNDERUNGEN			DATE	DWN	APVD
DESCRIPTION BESCHREIBUNG					
	P	LTR			
	E		23-MAR-00	R.N.	B.S.
CHANGED LENGTH / Laenge geaendert	E1		12-NOV-01	R.N.	G.L.
REVISED PER ECO-09-022908	E2		08OCT09	KK	AEG

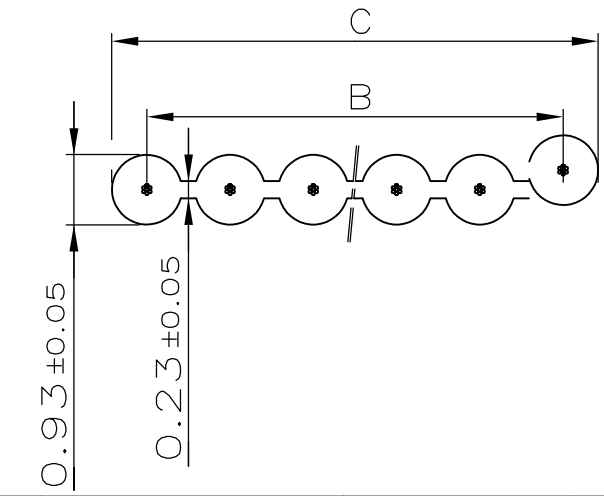
1 CONSTRUCTION

1.1 Conductor

- 1.1.1 Construction: Stranded 7x0.127 mm copper tin plated
- 1.1.2 Cross-section: 28AWG (0.089mm<sup>2</sup>)
- 1.1.3 Diam.: 0.39 mm ±0.05 mm

1.2 Insulation:

- 1.2.1 Material: PVC 105°C
- 1.2.2 Insulation thickness: nom. 0.24 mm
- 1.2.3 Diam.: 0.93 ±0.05 mm
- 1.2.4 Pitch: 1.27 ±0.05 mm (see Table 1)
- 1.2.5 Colour: Gray RAL7032
- Conductor #1 Red
- 1.2.6 Shore hardness: 94 ±3



2. Electrical requirements:

- 2.1 DC Resistance: 216 Ohm/km at 20°C
- 2.2 Insulation Resistance: 100 MOhm x km at 20°C
- 2.3 Max Operating Voltage: 300V at 50 Hz
- 2.4 Test voltage: min. 2000V 50Hz at 1Min
- 2.5 Capacitance: max. 60pF/m

3 Mechanical Requirements

- 3.1 Temperature Range
  - fixed -30°C +105°C
  - fixed -40°C +105°C according DIN72551
  - moving -20°C +105°C

4 Certification: UL2651

- CSA
- VDE 0811

5 Dimensions (see Table 1)

6 Remarks: Length per Reel has to be splice free

	Length per Reel (m)	C (mm)	B (mm)	Number of Conductors	AMP Partnumber	KLASING Partnumber
	100	80.94 ± 0.30	80.01 ± 0.30	64	6-726822-4	05006664
<del>△ OBSOLETE</del>	100	75.86 ± 0.30	74.93 ± 0.30	60	<del>6-726822-0</del>	05006660
<del>△ OBSOLETE</del>	100	63.16 ± 0.30	62.23 ± 0.30	50	<del>5-726822-0</del>	05006650
	100	50.46 ± 0.30	49.53 ± 0.30	40	4-726822-0	05006640
	100	42.84 ± 0.30	41.91 ± 0.30	34	3-726822-4	05006634
<del>△ OBSOLETE</del>	100	35.22 ± 0.30	34.29 ± 0.30	28	<del>2-726822-8</del>	05006628
<del>△ OBSOLETE</del>	100	32.68 ± 0.25	31.75 ± 0.25	26	<del>2-726822-6</del>	05006626
	100	25.06 ± 0.20	24.13 ± 0.20	20	2-726822-0	05006620
<del>△ OBSOLETE</del>	100	22.52 ± 0.20	21.59 ± 0.20	18	<del>1-726822-8</del>	05006618
	100	19.98 ± 0.20	19.05 ± 0.20	16	1-726822-6	05006616
<del>△ OBSOLETE</del>	100	18.71 ± 0.20	17.78 ± 0.20	15	<del>1-726822-5</del>	05006615
<del>△ OBSOLETE</del>	100	17.44 ± 0.20	16.51 ± 0.20	14	<del>1-726822-4</del>	05006614
	100	14.90 ± 0.20	13.97 ± 0.20	12	1-726822-2	05006612
	100	12.36 ± 0.20	11.43 ± 0.20	10	1-726822-0	05006610
	100	11.09 ± 0.20	10.16 ± 0.20	9	0-726822-9	05006609
	100	9.82 ± 0.15	8.89 ± 0.15	8	0-726822-8	05006608
	100	7.28 ± 0.15	6.35 ± 0.15	6	0-726822-6	05006606
	100	6.01 ± 0.15	5.08 ± 0.15	5	0-726822-5	05006605
	100	4.74 ± 0.10	3.81 ± 0.10	4	0-726822-4	05006604
<del>△ OBSOLETE</del>	-	2.20 ± 0.10	1.27 ± 0.05	2	<del>0-726822-2</del>	05006602

△ OBSOLETE PARTS: OBSOLETE CIS STREAMLINING  
 PER D.RENAUD/D.SINISI

THIS DRAWING IS A CONTROLLED DOCUMENT FOR AMP INCORPORATED. IT IS SUBJECT TO CHANGE AND THE CONTROLLING ENGINEERING ORGANIZATION SHOULD BE CONTACTED FOR THE LATEST REVISION. DIESES ZEICHNUNGSDOKUMENT WIRD DURCH AMP INCORPORATED KONTROLLIERT. ÄNDERUNGEN, DIE DEM TECHNISCHEN FORTSCHRITT DIENEN, SIND VORBEHALTEN. DEN JEWELNS LETZTGUELTIGEN ÄNDERUNGSSTAND ERFAHREN SIE AUF ANFRAGE.		DWN 15.08.1985 A.HOFFMANN CHK 19.08.1985 G.FELDMEIER		AMP Deutschland GmbH D - 63225 Langen	
DIMENSIONS: mm 		TOLERANCES UNLESS OTHERWISE SPECIFIED: ALLGEMEINTOLERANZEN n. ISO 8015 n. ISO 2768 - mH -E n. DIN 16901 - 140 0 PLC ±0.2 mm 1 PLC ± 2 PLC ± 3 PLC ±		NAME: RUNDLEITER-FLACHBANDKABEL PRODUCT SPEC: PRODUKTSPEZ. APPLICATION SPEC: VERARBEITUNGSSPEZ.	
MATERIAL: -		ANGLES /WINKEL ±- FINISH /OBERFLAECHE/FARBE: -		WEIGHT GEWICHT: - SIZE: A3 CAGE CODE: 00779 DRAWING NO ZEICHNUNGS-NR.: G- 726822	
CUSTOMER DRAWING /KUNDENZEICHNUNG			MASSSTAB: -	BLATT: 1 OF 1	REV: E2