

THIS DRAWING IS UNPUBLISHED.

RELEASED FOR PUBLICATION

20

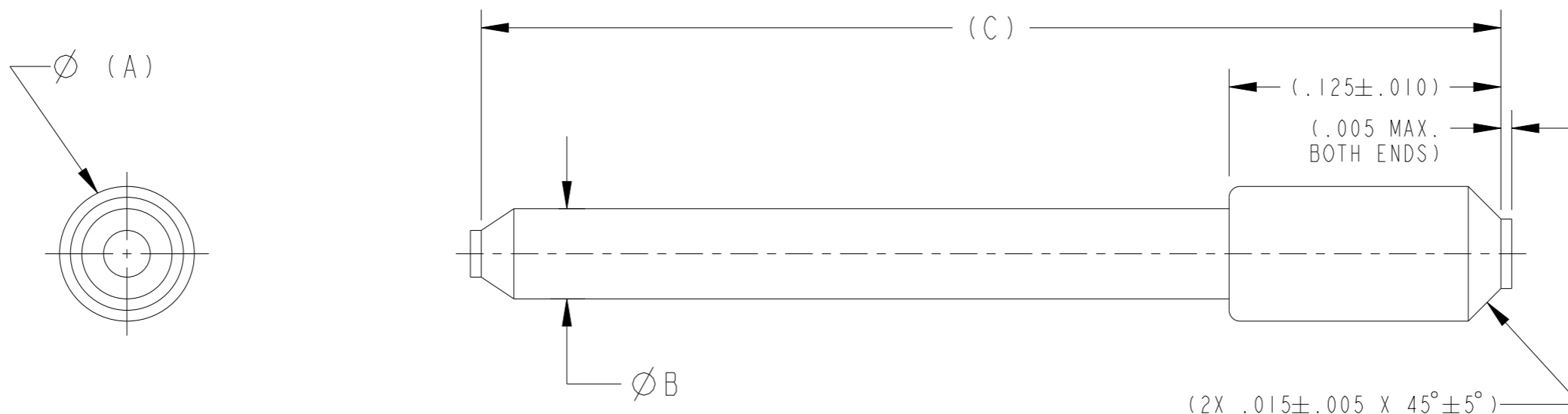
LOC -

DIST -

REVISIONS

© COPYRIGHT 20 BY - ALL RIGHTS RESERVED.

P	LTR	DESCRIPTION	DATE	DWN	APVD
	A	ACTIVE RELEASE PER ECO-14-001075	140221	GS	AT
	B	REVISED PER ECO-15-018025	151215	SS	BP
	C	REVISED PER ECO-18-018279	181109	PF	AR
	D	REVISED PER ECN-24-279143	28AUG24	AD	MR



PART NUMBER ***	SUPERCEDED NUMBER	SIZE	(COLOR CODE)	MILITARY PART NUMBER	Ø(A) MAX.	Ø(B) MAX.	(C) MAX
MS27488-22-2	-	22	BLACK	MS27488-22-2	.066	.045	.668
MS27488-20-2	-	20	RED	MS27488-20-2	.090	.058	.805
MS27488-16-2	-	16	GREEN	MS27488-16-2	.130	.079	.872
MS27488-12-2	-	12	ORANGE	MS27488-12-2	.170	.125	.841
MS27488-16-3	0613-1-1601	16	BLUE	MS27488-16-3	.130	.079	1.472
MS27488-12-3	0613-1-1201	12	YELLOW	MS27488-12-3	.170	.125	1.441

3. MATERIAL: PLASTIC ROD, MOLDED AND EXTRUDED-TEMPERATURE LIMIT 200°C MINIMUM. POLYPHENYLSULFONE (PPSU) PER ASTM-D6394. (B)

2. (INSULATION RESISTANCE SHALL BE 100 MEGAOHMS MINIMUM WHEN TESTED IN ACCORDANCE WITH ASTM D257.)

1. DIMENSIONS AND TOLERANCES SHOWN FOR REFERENCE ONLY.

NOTES: UNLESS OTHERWISE SPECIFIED.

DESCRIPTION:
SIZE 22, 20, 16
AND 12 PER MS27488

THIS DRAWING IS A CONTROLLED DOCUMENT.		DWN G.S. 130918	STE TE Connectivity	
DIMENSIONS: INCHES		CHK A. TEUNISSEN 140122		
TOLERANCES UNLESS OTHERWISE SPECIFIED:		APVD A. RENGIFO 140221	NAME SEAL, PLUG PER MS27488 ENVELOPE	
0 PLC ±-		PRODUCT SPEC MS27488	SIZE A3	
1 PLC ±0.1		APPLICATION SPEC -	CAGE CODE 11139	DRAWING NO MS27488-x-x-x
2 PLC ±0.01		WEIGHT -	RESTRICTED TO -	
3 PLC ±0.005		MATERIAL SEE NOTE 3	SCALE 15.000	
4 PLC ±0.0001			SHEET 1 OF 1	
ANGLES ±0.5		Customer Drawing		REV D
FINISH -				